

10000

STANDARD MANUAL CLAMPING

Material

Steel, heat-treated and enamelled.

() = Not to DIN standard.

collar nuts, 25000 plain washer.

Technical Notes

To DIN 6314.

Tips

Used with:

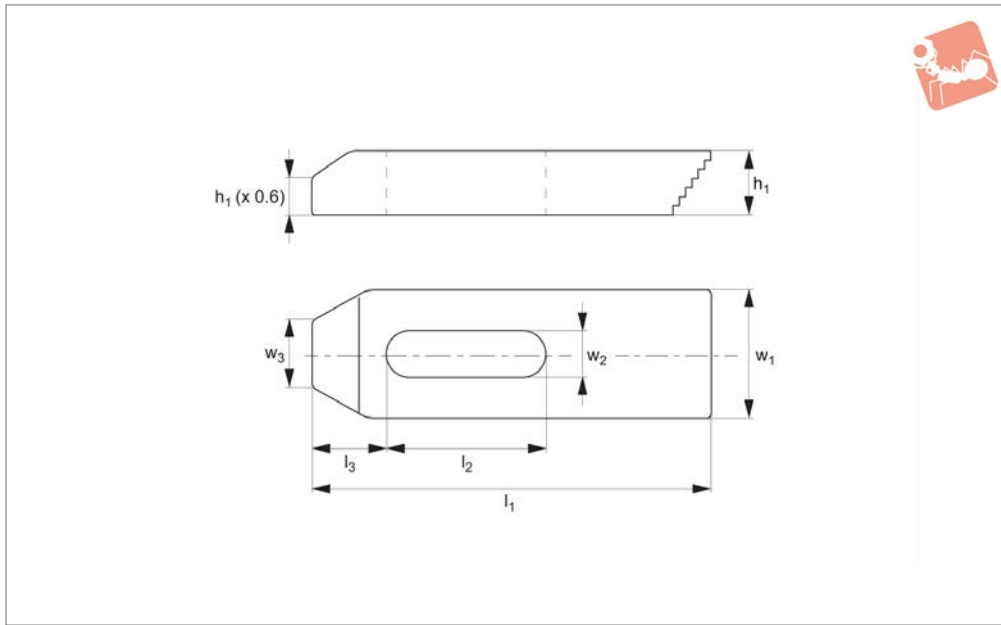
21000 T-slot bolts, 24000 T-nuts, 24400

Order No.	For bolt	For bolt inch	l_1	l_2	l_3	w_1	w_2	w_3	h_1	Weight g
10000.W0007	M 6	1/4"	50	20	10	20	6.6	8	10	63
10000.W0009	M 8	5/16"	60	22	13	25	9.0	10	12	113
10000.W0011	M10	3/8"	80	30	15	30	11.0	12	15	226
10000.W0014	M12, M14	1/2"	100	40	21	40	14.0	14	20	490
10000.W0015	M12, M14	1/2"	125	50	21	40	14.0	14	20	621
10000.W0018	M16, M18	5/8"	125	45	26	50	18.0	18	25	960
10000.W0019	M16, M18	5/8"	160	65	26	50	18.0	18	25	1240
10000.W0022	M20, M22	3/4"	160	60	30	60	22.0	22	30	1787
10000.W0023	M20, M22	3/4"	200	80	30	60	22.0	22	30	2237
10000.W0026	M24	1"	200	80	35	70	26.0	26	30	2580
10000.W0027	M24	1"	250	105	35	70	26.0	26	35	3800
10000.W0034	M30	1-1/4"	250	100	45	80	33.0	34	40	4934
10000.W0035	M30	1-1/4"	315	130	45	80	33.0	34	50	7788
10000.W0043	M36, M42	1-1/2"	400	150	100	100	(43.0)	43	60	15000



STANDARD MANUAL CLAMPING





10020

STANDARD MANUAL CLAMPING

Material

Steel, heat-treated and enamelled.

14000).

collar nuts, 25000 plain washer.

Technical Notes

To be used with step blocks etc (part no.

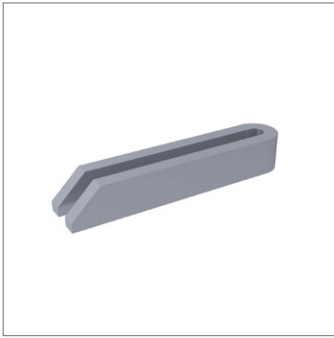
Tips

Used with:

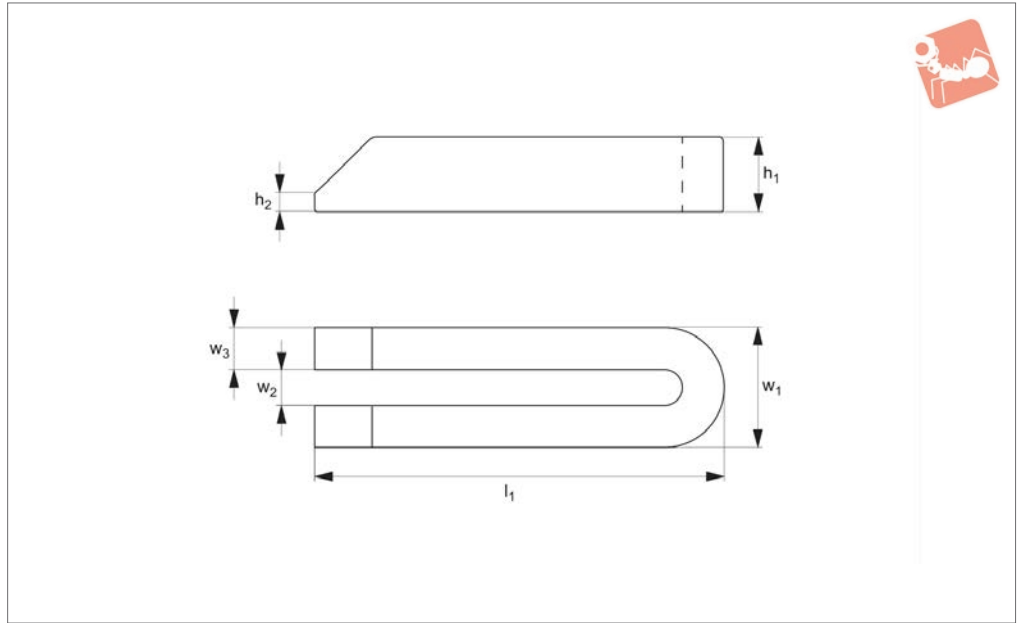
21000 T-slot bolts, 24000 T-nuts, 24400

Order No.	For bolt	For bolt inch	l_1	l_2	l_3	w_1	w_2	w_3	h_1	Weight g
10020.W0007	M 6	1/4"	50	20	10	20	6.6	8	10	55
10020.W0008	M 6	1/4"	80	45	10	20	6.6	8	10	90
10020.W0009	M 8	5/16"	60	22	13	25	9.0	10	12	100
10020.W0010	M 8	5/16"	100	60	13	25	9.0	10	12	180
10020.W0011	M10	3/8"	80	30	15	30	11.0	12	15	200
10020.W0012	M10	3/8"	125	70	15	30	11.0	12	15	350
10020.W0014	M12, M14	1/2"	100	40	21	40	14.0	14	20	450
10020.W0015	M12, M14	1/2"	160	90	21	40	14.0	14	20	770
10020.W0018	M16, M18	5/8"	125	45	26	50	18.0	18	25	900
10020.W0019	M16, M18	5/8"	200	110	26	50	18.0	18	25	1500
10020.W0022	M20, M22	3/4"	160	60	30	60	22.0	22	30	1700
10020.W0026	M24	1"	200	80	35	70	26.0	26	30	2500





10100



Material

Steel, heat-treated and enamelled.

() = Not to DIN standard.

24000 T-nuts, 24400 collar nuts,
25000 plain washer.

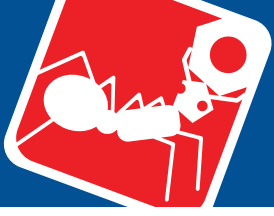
Technical Notes

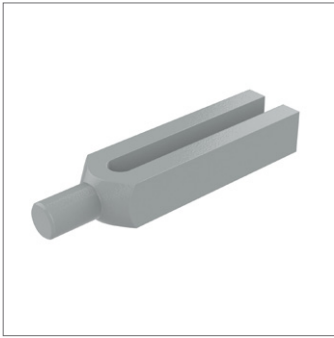
To DIN 6315B.

Tips

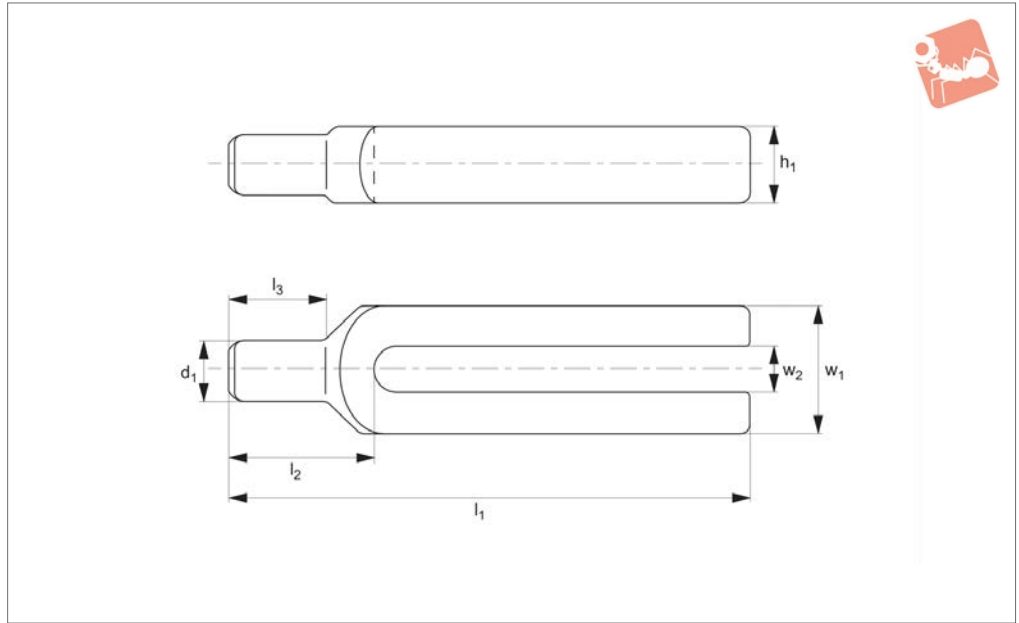
Used with:
26000 clamp support, 21000 T-slot bolts,

Order No.	For bolt	For bolt inch	l_1	w_1	w_2	w_3	h_1	h_2	Weight g
10100.W0007	M 6	1/4"	60	19	6.6	6	12	3	60
10100.W0009	M 8	5/16"	80	25	9.0	8	15	4	140
10100.W0011	M10	3/8"	100	31	11.0	10	20	5	300
10100.W0014	M12, M14	1/2"	125	38	14.0	12	25	6	570
10100.W0015	M12, M14	1/2"	160	38	14.0	12	25	6	730
10100.W0016	M12, M14	1/2"	200	38	14.0	12	25	6	910
10100.W0018	M16, M18	5/8"	160	48	18.0	15	30	8	1080
10100.W0019	M16, M18	5/8"	200	48	18.0	15	30	8	1360
10100.W0020	M16, M18	5/8"	250	48	18.0	15	40	10	2250
10100.W0022	M20, M22	3/4"	200	52	22.0	15	40	10	1800
10100.W0023	M20, M22	3/4"	250	62	22.0	20	40	10	3000
10100.W0024	M20, M22	3/4"	315	62	22.0	20	40	10	3850
10100.W0025	M20, M22	3/4"	500	62	(22.0)	20	50	10	7500
10100.W0026	M24	1"	200	66	26.0	20	40	10	2400
10100.W0027	M24	1"	250	66	26.0	20	40	10	3000
10100.W0028	M24	1"	315	66	26.0	20	40	10	3850
10100.W0029	M24	1"	400	66	(26.0)	20	50	10	5962
10100.W0030	M24	1"	500	66	(26.0)	20	50	10	7600
10100.W0031	M24	1"	600	66	(26.0)	20	50	10	9042
10100.W0032	M24	1"	800	66	(26.0)	20	50	10	12122
10100.W0034	M30	1-1/4"	250	74	33.0	20	50	12	3700
10100.W0035	M30	1-1/4"	315	74	33.0	20	50	12	4750
10100.W0036	M30	1-1/4"	400	74	33.0	20	50	12	6100
10100.W0037	M30	1-1/4"	600	74	(33.0)	20	50	12	9200
10100.W0038	M30	1-1/4"	1000	94	(33.0)	30	60	12	28000
10100.W0040	M36	1-1/2"	400	100	(40.0)	30	60	12	11000
10100.W0041	M36	1-1/2"	600	100	(40.0)	30	60	12	16500
10100.W0042	M36, M42	1-5/8"	600	123	(43.0)	40	80	12	29600





10120



Material

Steel, heat-treated and enamelled.

Tips

Used with:
21000 T-slot bolts, 24000 T-nuts, 24400 collar nuts, 25000 plain washer.

Technical Notes

To DIN 6315C.

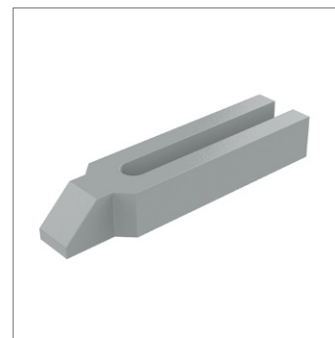
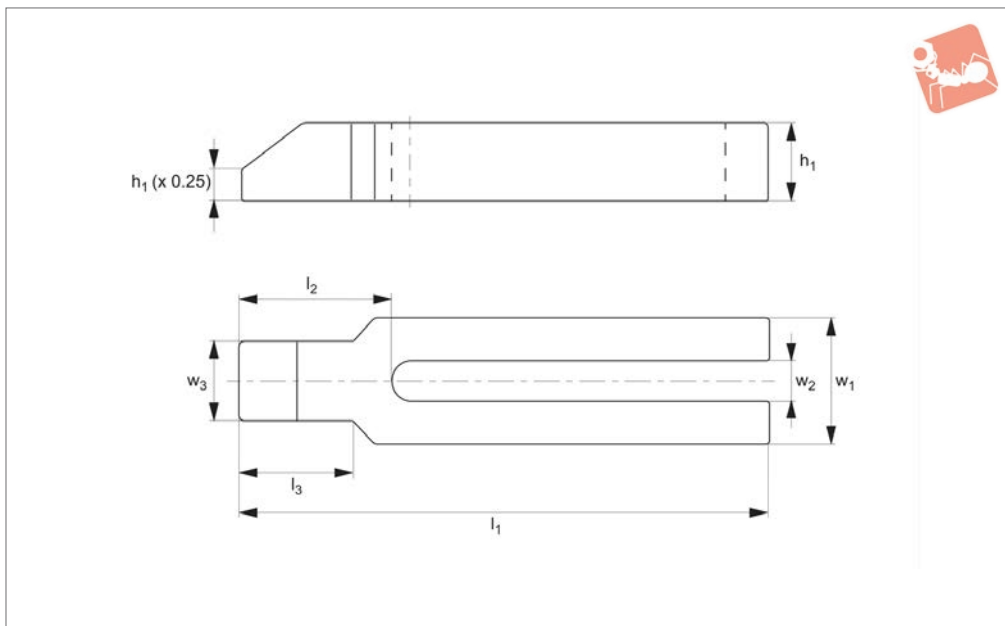
Order No.	For bolt	For bolt inch	l_1	l_2	l_3	w_1	w_2	h_1	d_1	Weight g
10120.W0009	M 8	5/16"	100	30	18	30	9	15	12	220
10120.W0011	M10	3/8"	125	36	24	30	11	20	16	350
10120.W0014	M12, M14	1/2"	160	45	30	40	14	25	20	750
10120.W0015	M12, M14	1/2"	200	45	30	40	14	25	20	950
10120.W0018	M16, M18	5/8"	200	55	36	50	18	30	24	1400
10120.W0019	M16, M18	5/8"	250	55	36	50	18	30	24	1750
10120.W0022	M20, M22	3/4"	250	65	45	60	22	40	30	2700
10120.W0023	M20, M22	3/4"	315	65	45	60	22	40	30	3400
10120.W0026	M24	1"	250	80	56	70	26	40	38	3200
10120.W0027	M24	1"	315	80	56	70	26	40	38	4100
10120.W0034	M30	1-1/4"	315	85	56	80	33	50	45	5700
10120.W0035	M30	1-1/4"	400	85	56	80	33	50	45	7000





Forked Clamps with shoe

Standard Manual Clam-



10140

STANDARD MANUAL CLAMPING

Material

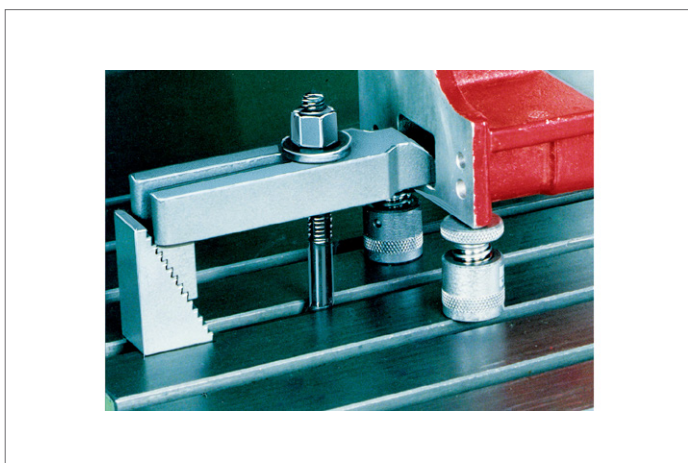
Steel, heat-treated and enamelled.

21000 T-slot bolts, 24000 T-nuts, 24400 collar nuts, 25000 plain washer.

Tips

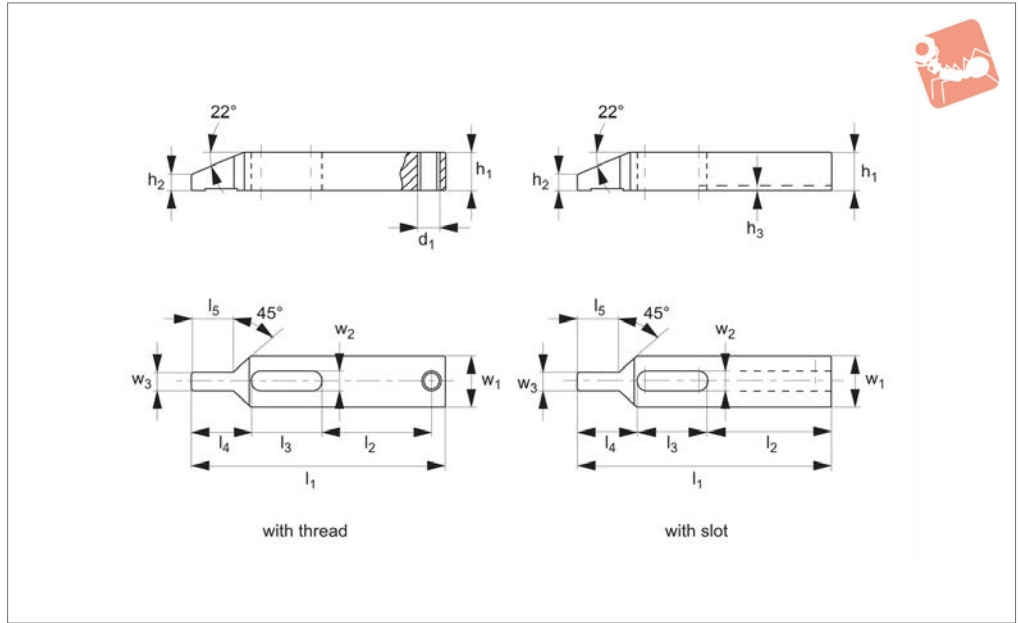
Used with:

Order No.	For bolt	For bolt inch	l_1	l_2	l_3	w_1	w_2	w_3	h_1	Weight g
10140.W0009	M 8	5/16"	100	32	18	30	9	16	15	240
10140.W0011	M10	3/8"	125	38	24	30	11	20	20	380
10140.W0014	M12, M14	1/2"	160	47	30	40	14	24	25	800
10140.W0015	M12, M14	1/2"	200	47	30	40	14	24	25	950
10140.W0018	M16, M18	5/8"	200	57	36	50	18	28	30	1500
10140.W0019	M16, M18	5/8"	250	57	36	50	18	28	30	1850
10140.W0022	M20, M22	3/4"	250	68	45	60	22	35	40	2900
10140.W0023	M20, M22	3/4"	315	68	45	60	22	35	40	3600
10140.W0026	M24	1"	250	83	56	70	26	43	40	3400
10140.W0027	M24	1"	315	83	56	70	26	43	40	4300
10140.W0034	M30	1-1/4"	315	88	56	80	33	50	50	6000
10140.W0035	M30	1-1/4"	400	88	56	80	33	50	50	7300





10160



Material

Steel, heat-treated and blackened.

difficult to reach areas.

Technical Notes

The small nose permits clamping even on

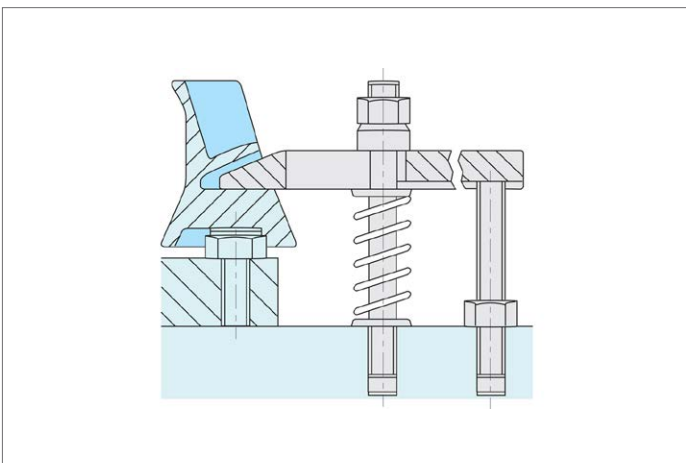
Tips

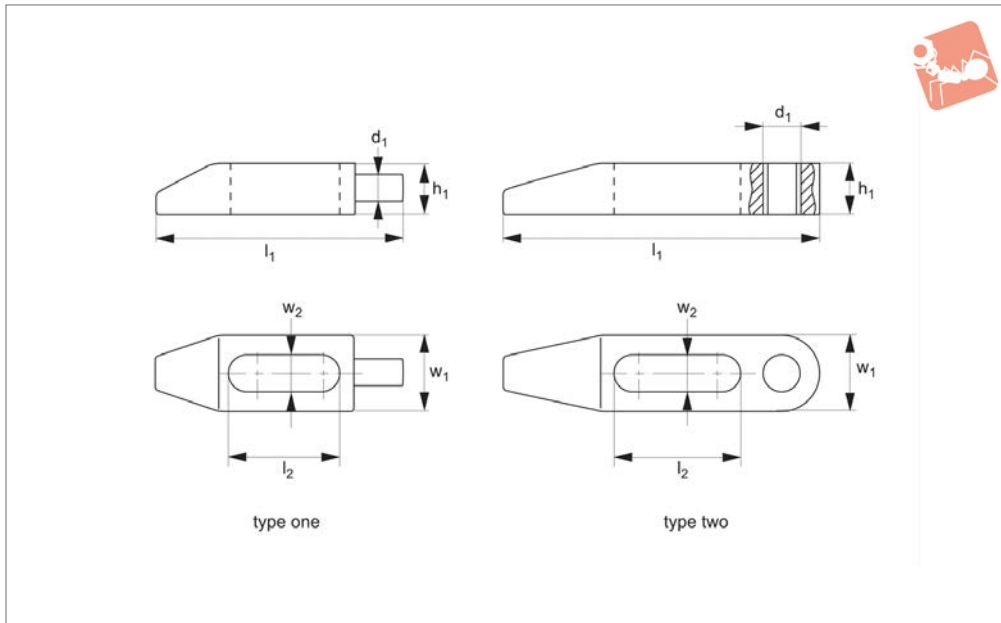
- „With thread“ for vertical adjustment.
- „With slot“ for horizontal adjustment.

Used with:

- 21000 T-slot bolts, 24000 T-nuts, 24400 collar nuts, 25000 plain washer.

Order No.	Type	l_1	l_2	l_3	l_4	l_5	w_1	w_2	w_3	h_1	h_2	h_3	d_1	Weight g
10160.W0107	With thread	80	34	23	17	13	15	6.6	7.5	8	2.5	-	M 6	54
10160.W0109	With thread	100	42	29	22	17	20	9.0	9.5	12	4.0	-	M 8	133
10160.W0111	With thread	125	52	36	28	21	25	11.0	11.5	15	5.0	-	M10	261
10160.W0113	With thread	150	63	43	34	25	30	13.0	13.5	20	7.0	-	M12	504
10160.W0117	With thread	175	70	52	40	29	35	17.0	15.5	25	9.0	-	M16	828
10160.W0207	With slot	80	34	23	17	13	15	6.6	7.5	8	2.5	2.5	-	50
10160.W0209	With slot	100	42	29	22	17	20	9.0	9.5	12	4.0	3.0	-	127
10160.W0211	With slot	125	52	36	28	21	25	11.0	11.5	15	5.0	3.5	-	251
10160.W0213	With slot	150	63	43	34	25	30	13.0	13.5	20	7.0	4.0	-	488
10160.W0217	With slot	175	70	52	40	29	35	17.0	15.5	25	9.0	4.5	-	812
10160.W0222	With slot	225	-	62	52	33	50	22.0	19.5	35	15.5	5.5	-	2200
10160.W0226	With slot	250	-	71	60	36	60	26.0	21.5	40	17.5	5.5	-	3340





10164

STANDARD MANUAL CLAMPING

Material

Stainless steel (AISI 630,17-4 PH), heat-treated.

both normal and restricted areas with minimum tooling interference.

collar nuts, 25000 plain washer.

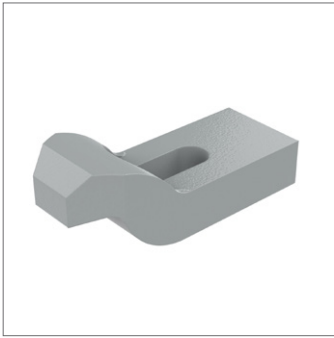
Technical Notes

This is a low profile slotted clamp for use in

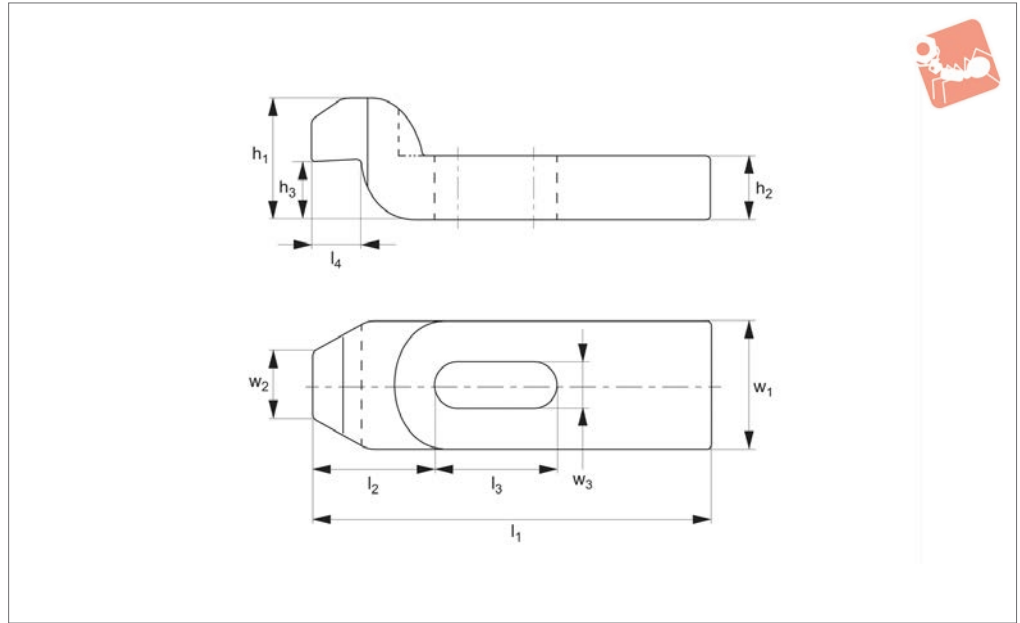
Tips

Used with:
21000 T-slot bolts, 24000 T-nuts, 24400

Order No.	Type	Holding force kN	l_1	l_2	w_1	w_2	h_1	d_1	Weight g
10164.W0092	One	14.2	92	22.0	22.6	10.4	11	9,5 Ø	150
10164.W0127	Two	26.7	127	34.5	25.4	13.4	19	M12	340
10164.W0152	Two	38.2	152	38.1	30.5	16.5	22	M16	600
10164.W0178	Two	69.8	178	38.1	35.6	19.8	27	M20	1130



10200



Material

Steel, heat-treated and enamelled.

() = not to DIN standard.

collar nuts, 25000 plain washer.

Technical Notes

To DIN 6316.

Tips

Used with:

21000 T-slot bolts, 24000 T-nuts, 24400

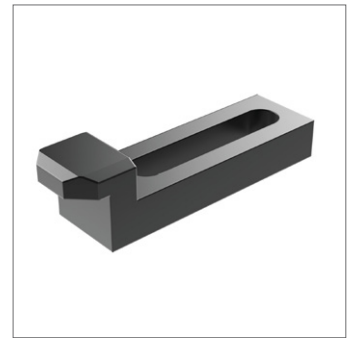
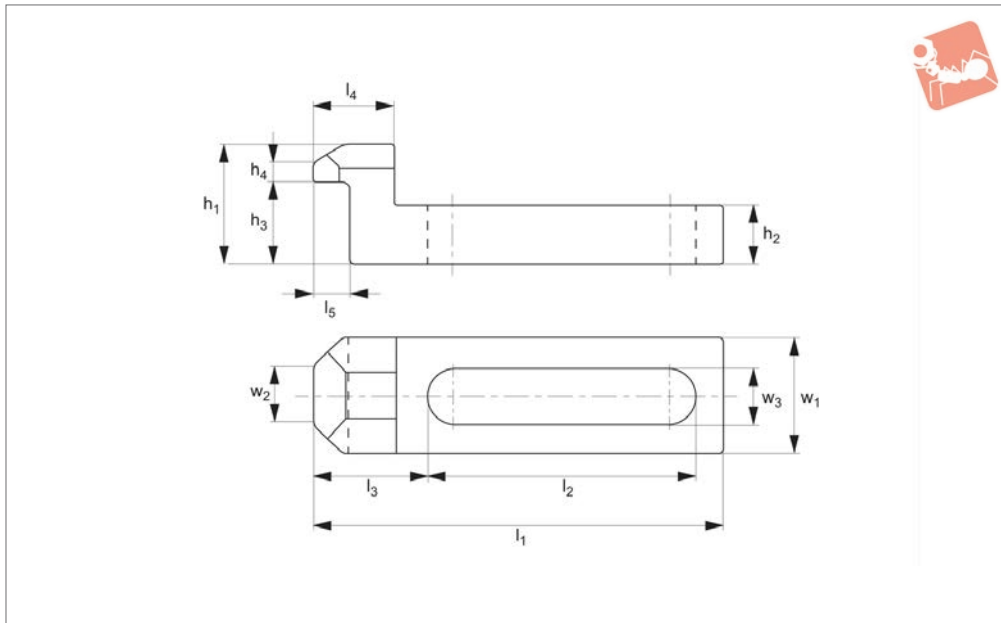
Order No.	For bolt	For bolt inch	l_1	l_2	l_3	l_4	w_1	w_2	w_3	h_1	h_2	h_3	Weight g
10200.W0007	M 6	1/4"	60	22.0	20	8	20	10	6.6	20	10	9	81
10200.W0009	M 8	5/16"	80	27.5	25	9	25	12	9.0	24	12	11	166
10200.W0011	M10	3/8"	100	36.0	32	12	30	15	11.0	30	15	14	299
10200.W0014	M12, M14	1/2"	125	44.0	40	16	40	20	14.0	40	20	18	678
10200.W0018	M16, M18	5/8"	125	51.5	40	20	50	25	(18.0)	50	25	23	1049
10200.W0019	M16, M18	5/8"	160	51.5	50	20	50	25	18.0	50	25	23	1366
10200.W0022	M20, M22	3/4"	160	59.0	55	24	60	30	(22.0)	60	30	27	1911
10200.W0023	M20, M22	3/4"	200	59.0	70	24	60	30	22.0	60	30	27	2417
10200.W0026	M24	1"	200	76.5	60	25	70	35	(26.0)	70	35	32	3315
10200.W0027	M24	1"	250	76.5	80	25	70	35	26.0	70	35	32	4132
10200.W0034	M30	1-1/4"	250	96.0	80	40	80	40	(33.0)	80	40	45	5225
10200.W0035	M30	1-1/4"	315	96.0	100	40	80	40	33.0	100	50	45	8459
10200.W0043	M36, M42	1-1/2"- 1-5/8"	400	105.0	120	50	100	50	(43.0)	120	60	55	17078





Stepped Clamps long slot

Standard Manual Clam-



10210

STANDARD MANUAL CLAMPING

Material

Steel, heat-treated and blackened.

21000 T-slot bolts, 24000 T-nuts, 24400 collar nuts, 25000 plain washer.

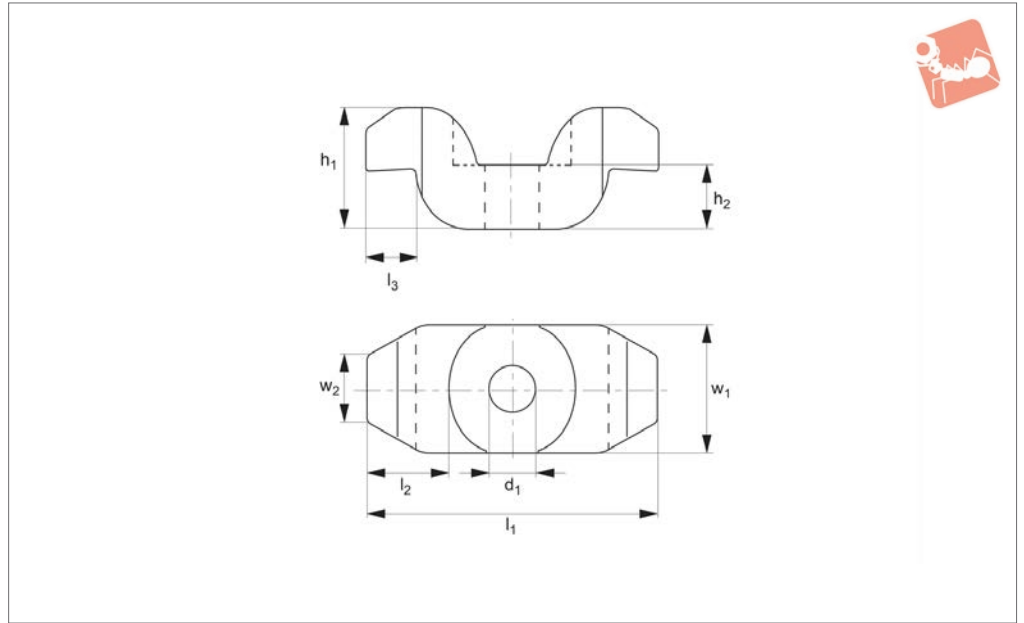
Tips

Used with:

Order No.	For bolt	For bolt inch	l_1	l_2	l_3	l_4	l_5	w_1	w_2	w_3	h_1	h_2	h_3	h_4	Weight g
10210.W0107	M 6	1/4"	55	36	15.5	11	5	15	8	6.6	16	8	11	2	39
10210.W0109	M 8	5/16"	70	46	19.5	15	8	20	10	9.0	20	10	14	3	80
10210.W0111	M10	3/8"	90	58	26.5	19	10	25	12	11.0	25	13	18	4	170
10210.W0113	M12	1/2"	115	75	32.5	24	12	30	15	13.0	32	16	23	5	328



10220



Material

Steel, heat-treated and enamelled.

21000 T-slot bolts, 24000 T-nuts, 24400 collar nuts, 25000 plain washer, 25700 dished washer.

Tips

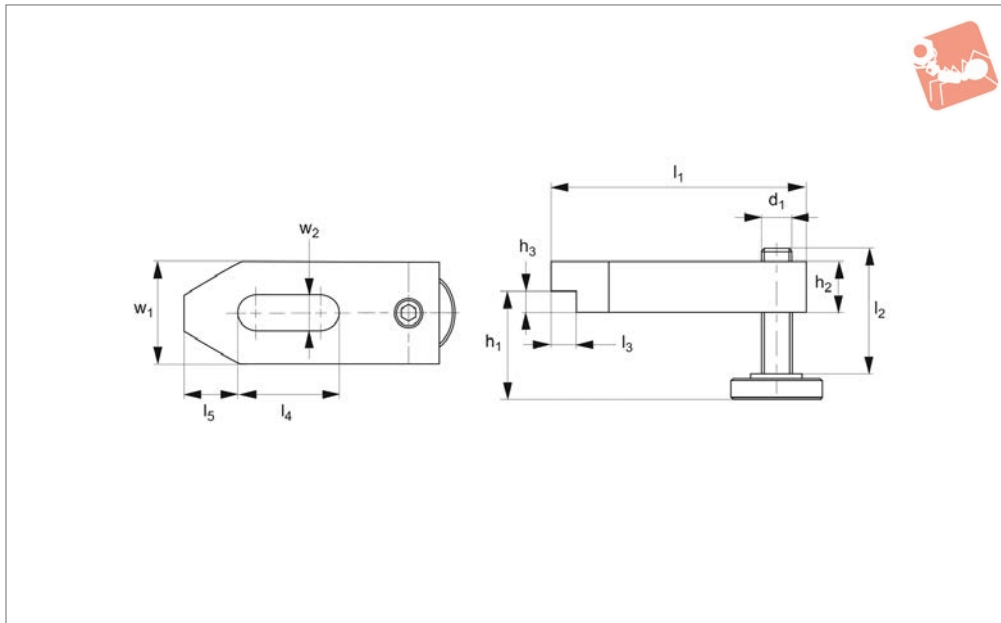
Used with:

Order No.	For bolt	l_1	l_2	l_3	w_1	w_2	h_1	h_2	d_1	Weight g
10220.W0018	M12-M18	100	26	16	40	20	40	20	18	620
10220.W0025	M20-M24	140	38	24	60	30	60	30	25	2040



Stepped Clamp with adjusting support screw

Standard
Manual Clam-



10230

STANDARD MANUAL CLAMPING

Material

Steel, heat-treated and enamelled.

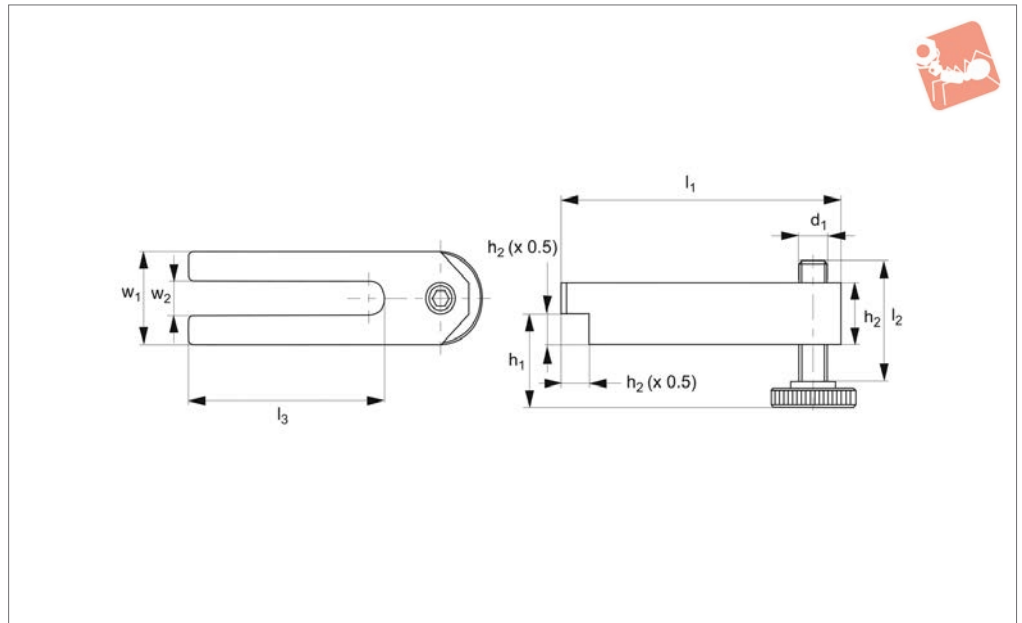
Technical Notes

To clamp thin parts, turn the clamp over.

Order No.	For clamping screw	$d_1 \times l_2$	l_4	l_5	w_1	$w_2 \times l_1$	h_1	h_2	$h_3 \times l_3$	Weight g
10230.W0014	M12, M14	M12x49	40	21	40	14x100	10-55	20	8,0x10,0	580
10230.W0018	M16, M18	M16x55	45	26	50	18x125	13-62	25	10,0x12,5	1140
10230.W0022	M20, M22	M20x69	60	30	60	22x160	16-77	30	12,0x15,0	2100



10240



Material

Steel, heat-treated and enamelled.

Technical Notes

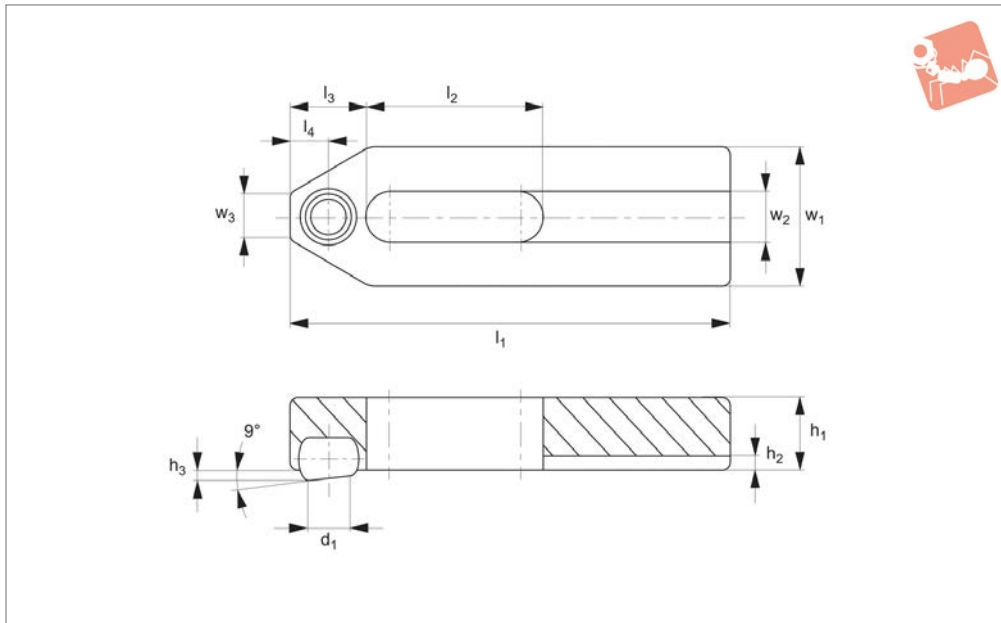
To clamp thin parts, turn the clamp over.

Order No.	For clamping screw	$d_1 \times l_2$	l_3	w_1	$w_2 \times l_1$	h_1	h_2	Weight g
10240.W0010	M10	M10x39	70	30	11x100	8-47	20	330
10240.W0014	M12, M14	M12x49	90	40	14x125	10-59	25	700
10240.W0018	M16, M18	M16x55	110	50	18x160	13-67	30	1300
10240.W0022	M20, M22	M20x69	135	60	22x200	16-85	40	2600



Plain Clamps with self-aligning support

Standard Manual Clam-



10300

STANDARD MANUAL CLAMPING

Material

Body: steel, heat-treated and blackened.
Ball: ball-bearing steel, hardened and bright.

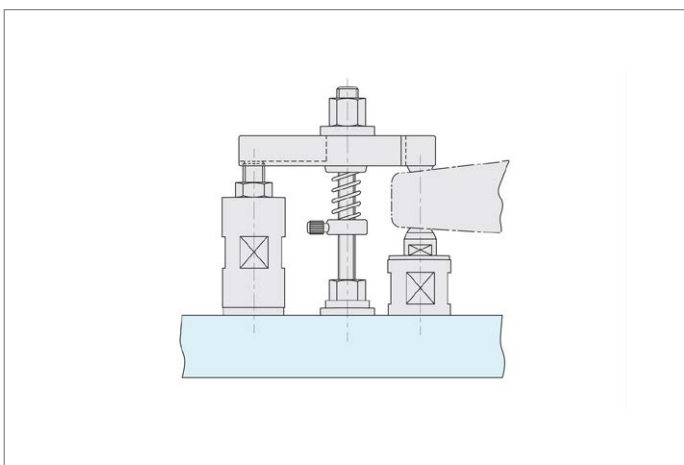
Tips

Provides alignment of the clamp with the workpiece, useful where there is some component variation. For suitable supporting screw see part no. 18400.

Technical Notes

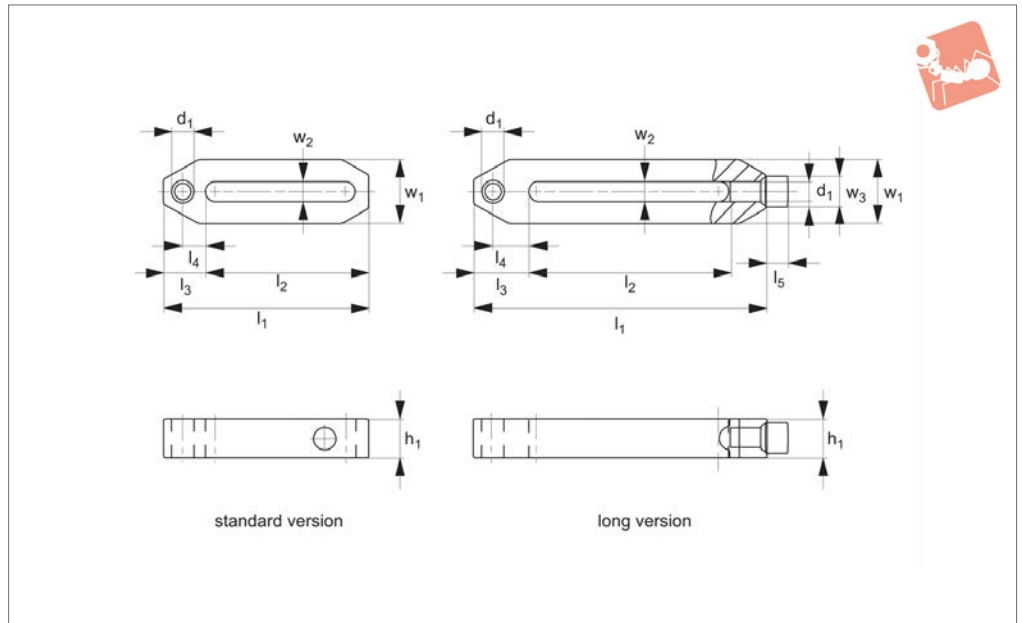
Ball secured against turning.

Order No.	For bolt	For bolt inch	l_1	l_2	l_3	l_4	w_1	w_2	w_3	h_1	h_2	h_3	Ball dia.	d_1	Weight g
10300.W0007	M 6	1/2"	50	20	10	5.0	20	6.6	8	10	2.5	1.6	8.5	5.8	61
10300.W0009	M 8	5/16"	60	22	13	6.5	25	9.0	10	12	3.0	2.0	10.0	7.2	109
10300.W0011	M10	3/8"	80	30	15	7.5	30	11.0	12	15	3.5	2.7	12.0	8.6	219
10300.W0014	M12	1/2"	125	50	21	10.5	40	13.0	14	20	4.0	3.5	16.0	10.5	615





10700



Material

Steel, hardened and blackened.

positioning screw and is particularly useful where long reach is required.

used with these clamps.

Technical Notes

The long version has an adjustable rear

Tips

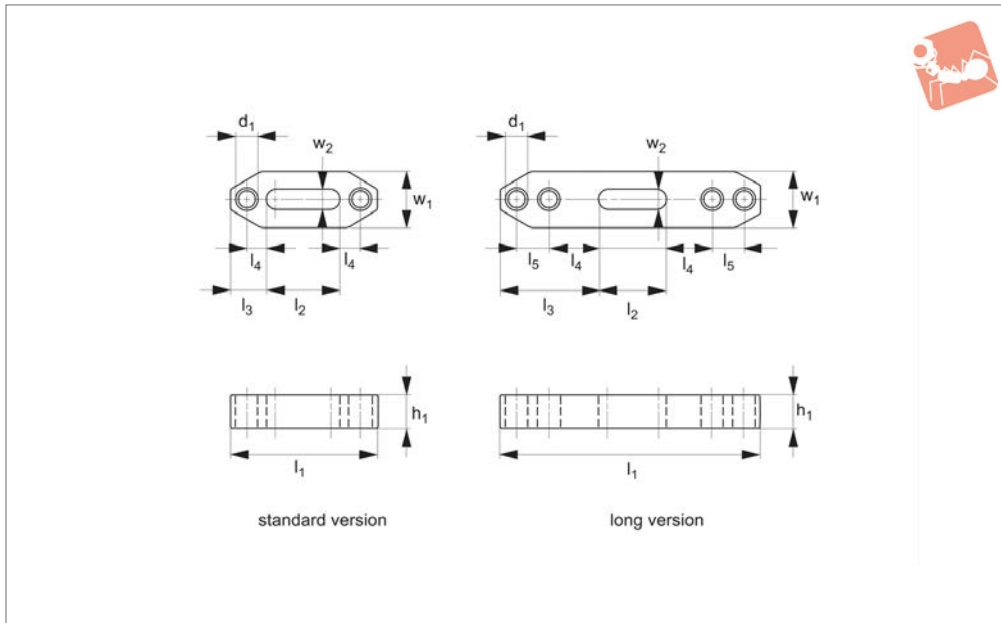
Self-aligning pads (part no. 34100) can be

Order No.	Type	Size	$h_1 \times w_1$	l_1	l_2	l_3	l_4	l_5	w_2	w_3	d_1	Weight g
10700.W0012	Standard	12	20x35,0	110	82	21.5	11.5	-	12.5	-	M12	340
10700.W0016	Standard	16	30x40,0	142	107	28.0	15.0	-	17.0	-	M16	770
10700.W0020	Standard	20	40x50,0	200	150	38.0	21.0	-	21.0	-	M20	1800
10700.W0112	Long	12	20x35,0	156	106	30.0	20.0	12	12.5	18	M12	600
10700.W0116	Long	16	30x45,5	196	136	35.0	22.0	16	17.0	24	M16	1400
10700.W0120	Long	20	40x60,0	298	221	47.0	30.0	20	21.0	30	M20	3900



Double Ended Straight Clamp

Standard Manual Clamp-



10740

STANDARD MANUAL CLAMPING

Material

Steel, hardened and blackened.

same time.

Technical Notes

Ideal for clamping two similar parts at the

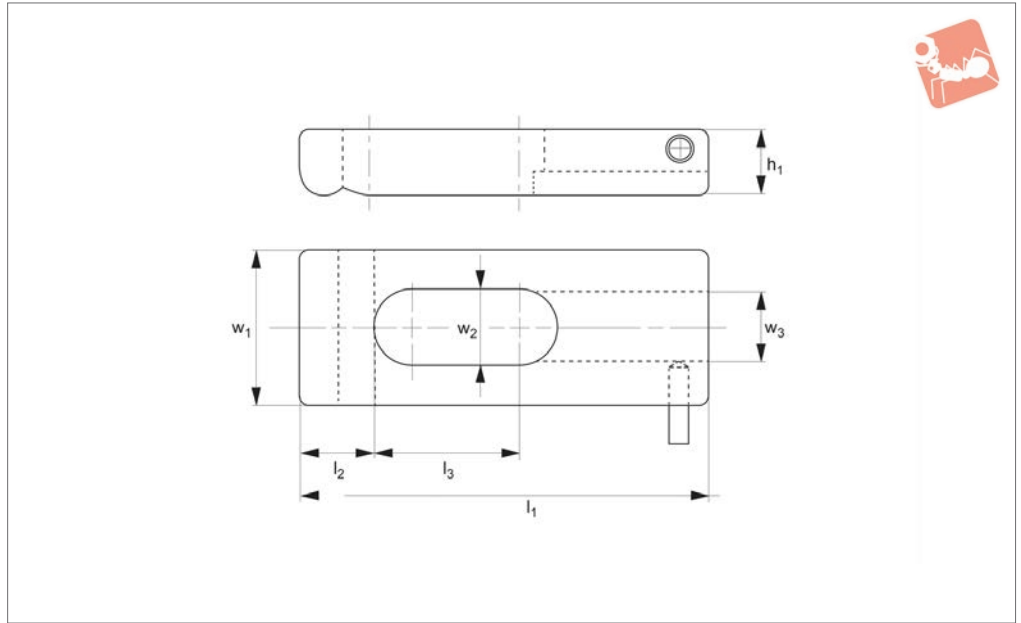
Tips

Self-aligning pads (part no. 34100) can be used with these clamps.

Order No.	Type	Size	$h_1 \times w_1$	l_1	l_2	l_3	l_4	l_5	w_2	d_1	Weight g
10740.W0012	Standard	12	15x30	80	33	23.5	13.5	-	12.5	M12	200
10740.W0016	Standard	16	25x40	100	42	29.0	16.0	-	17.0	M16	525
10740.W0112	Long	12	20x30	160	33	63.5	33.5	20	12.5	M12	610
10740.W0116	Long	16	30x40	200	42	79.0	41.0	25	17.0	M16	1480



18200



STANDARD MANUAL CLAMPING

Material

Steel, heat-treated.

Technical Notes

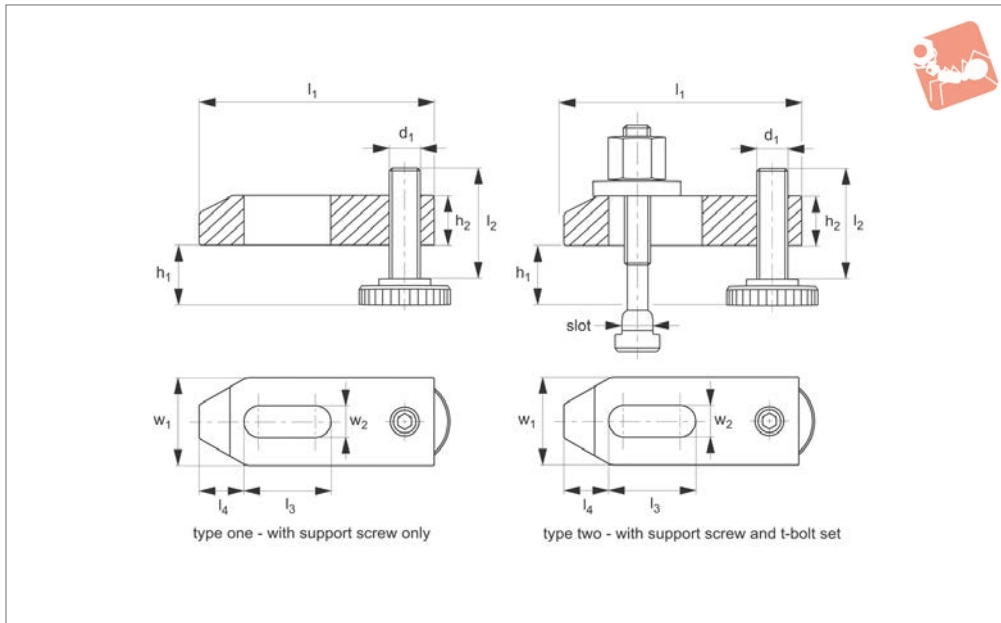
To be used with supporting screw no. 18400.

Order No.	l_1	l_2	l_3	w_1	w_2	w_3	h_1	Weight g
18200.W0001	100	13.5	37	30	15	12.5	20	350
18200.W0002	125	24.5	50	40	19	12.5	20	590



Adjustable Plain Clamps with height adjusting screw

Standard
Manual Clam-



10400

STANDARD MANUAL CLAMPING

Material

Heat-treated steel, enamelled.

Technical Notes

Type One - clamp and support screw only.

Type Two - clamp, support screw and t-bolt set.

h* - dependent on depth of slot and posi-

tion of fixture nut.

Tips

Often used for clamping press tools.

Used with:

10680 Ratchet clamp lever.

21000 T-Slot bolt.

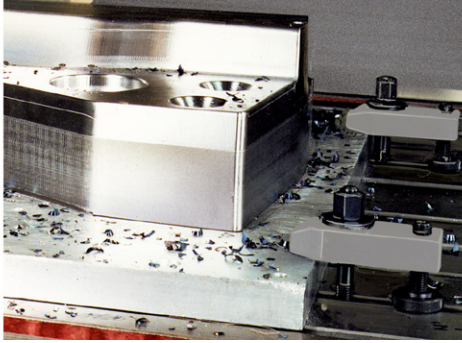
24400 Collar Nut.

25000 Plain washer.

Replacement Parts:

Replacement support screw see part no. 10410.

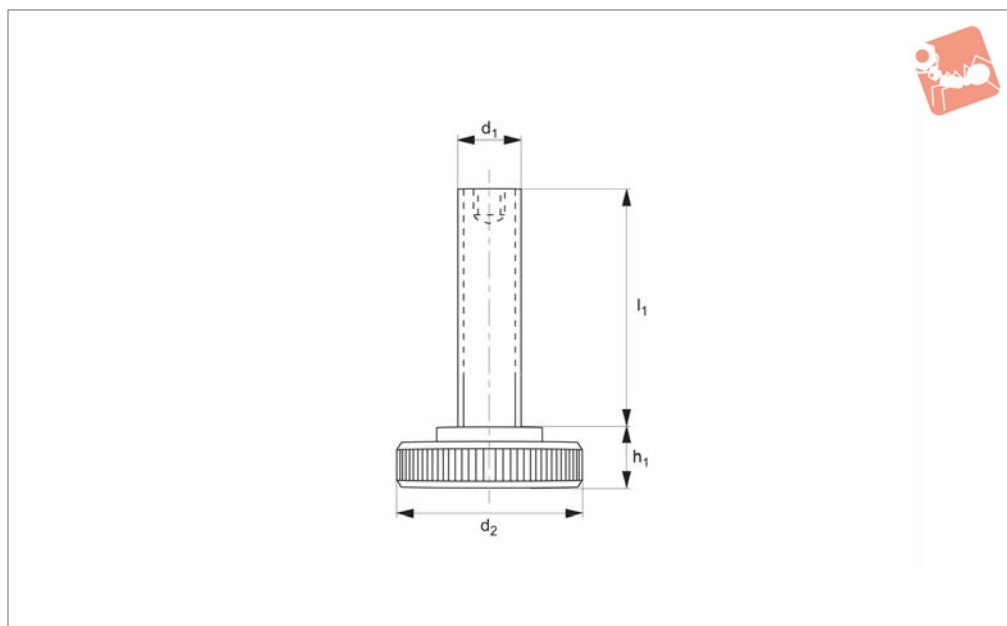
Order No.	Type	For bolt	Supplied T-bolt	T-slot size	d ₁ x l ₂	h ₁	h ₂	l ₃	l ₄	w ₁	w ₂ x l ₁	Weight g
10400.W0010	One	M10	-	-	M10x39	8-37	15	30	15	30	11x80	200
10400.W0012	One	M12, M14	-	-	M12x49	10-47	20	40	21	40	14x100	560
10400.W0014	One	M12, M14	-	-	M12x94	10-92	20	40	21	40	14x100	635
10400.W0016	One	M16, M18	-	-	M16x55	13-52	25	45	26	50	18x125	1110
10400.W0018	One	M16, M18	-	-	M16x90	13-87	25	45	26	50	18x125	1230
10400.W0020	One	M20, M22	-	-	M20x69	16-65	30	60	30	60	22x160	2050
10400.W0022	One	M20, M22	-	-	M20x109	16-105	30	60	30	60	22x160	2230
10400.W0024	One	M24	-	-	M24x87	20-83	30	80	35	70	26x200	3200
10400.W0026	One	M24	-	-	M24x137	20-133	30	80	35	70	26x200	3470
10400.W0028	One	M24	-	-	M24x87	20-80	35	105	35	70	26x250	4340
10400.W0030	One	M24	-	-	M24x137	20-130	35	105	35	70	26x250	4520
10400.W0032	One	M30	-	-	M30x180	24-150	50	130	45	80	33x315	11215
10400.W0034	One	M36, M42	-	-	M30x180	24-150	80	170	80	100	43x400	24350
10400.W0110	Two	M10	M10x10x80	10	M10x39	08-32	15	30	15	30	11x80	340
10400.W0112	Two	M12, M14	M12x12x100	12	M12x49	10-40	20	40	21	40	14x100	700
10400.W0114	Two	M12, M14	M12x14x100	14	M12x49	10-38	20	40	21	40	14x100	720
10400.W0115	Two	M12, M14	M12x14x160	14	M12x94	23-92	20	40	21	40	14x100	845
10400.W0116	Two	M16, M18	M16x16x125	16	M16x55	13-48	25	45	26	50	18x125	1400
10400.W0117	Two	M16, M18	M16x16x160	16	M16x90	15-83	25	45	26	50	18x125	1610
10400.W0118	Two	M16, M18	M16x18x125	18	M16x55	13-46	25	45	26	50	18x125	1400
10400.W0119	Two	M16, M18	M16x18x160	18	M16x90	13-81	25	45	26	50	18x125	1630
10400.W0120	Two	M20, M22	M20x20x160	20	M20x69	16-65	30	60	30	60	22x160	2600
10400.W0121	Two	M20, M22	M20x20x200	20	M20x109	21-105	30	60	30	60	22x160	2930
10400.W0122	Two	M20, M22	M20x22x160	22	M20x69	16-65	30	60	30	60	22x160	2770
10400.W0123	Two	M20, M22	M20x22x200	22	M20x109	19-105	30	60	30	60	22x160	2980
10400.W0124	Two	M24	M24x28x200	28	M24x87	20-80	35	105	35	70	26x250	5486
10400.W0125	Two	M24	M24x28x250	28	M24x137	30-130	35	105	35	70	26x250	5716
10400.W0126	Two	M30	M30x36x315	36	M30x180	24-150	50	130	45	80	33x315	11995
10400.W0127	Two	M36, M42	M36x42x400	42	M30x180	24-150	80	170	80	100	43x100	25683
10400.W0113	Two	M12, M14	M12x12x160	12	M12x49	24-92	20	40	21	40	14x100	830





Support Screw for adjustable clamps

Standard Manual Clam-



10410

STANDARD MANUAL CLAMPING

Material

Steel, hardened, strength class 8.8.

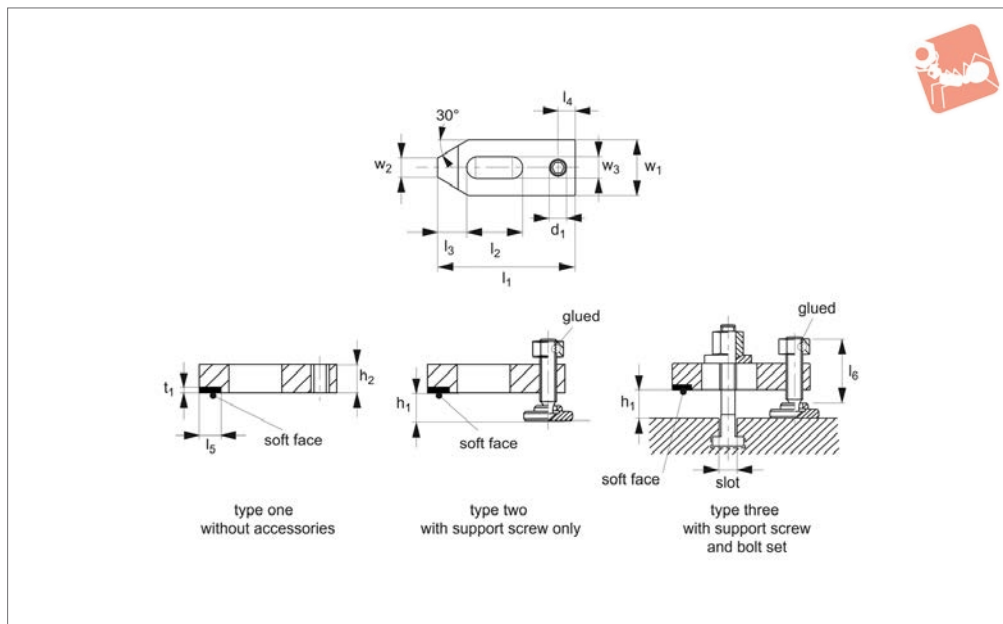
Technical Notes

Suitable for all lockable clamps.

Order No.	$d_1 \times l_1$	d_2	h_1	Weight g
10410.W0010	M10x39	30	8	52
10410.W0012	M12x49	36	10	96
10410.W0013	M12x94	36	10	145
10410.W0016	M16x55	42	13	180
10410.W0017	M16x90	42	13	230
10410.W0020	M20x69	50	16	320
10410.W0021	M20x109	50	16	400
10410.W0024	M24x87	60	20	590
10410.W0025	M24x137	60	20	820
10410.W0030	M30x180	80	24	1704



10420



Material

Clamps: steel, heat-treated, blackened.
Protective face: brass, brazed.

Technical Notes

Type one: clamp only.

Type two: clamp and support screw only.

Type three: clamp, support screw and T-bolt set.

h_1 - dependent on depth of slot and position of fixture nut.

The protective brass plate, brazed on to the clamp, acts to protect the workpiece from damage under clamping.

Tips

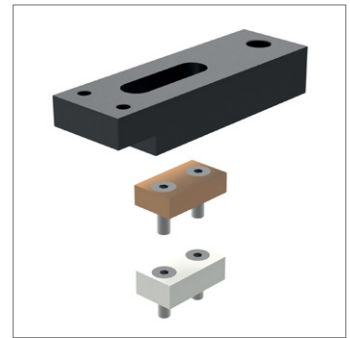
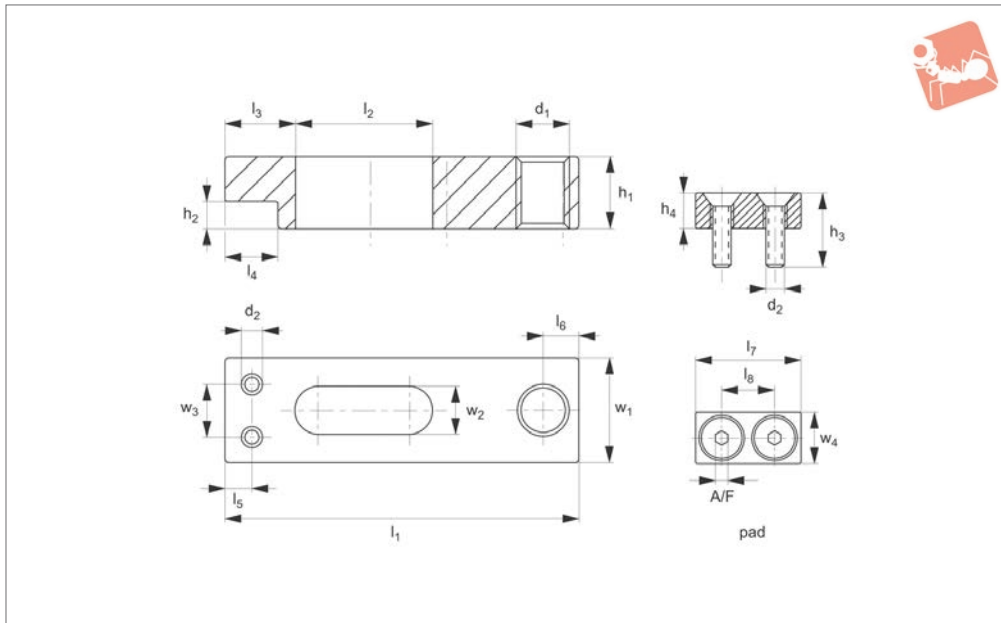
Often used for clamping press tools.

Used with:

10680 ratchet clamp level, 21000 T-slot bolt, 24400 collar nut, 25000 plain washer.

Replacement support screw see part nos. 34500 and 34520.

Order No.	Type	For bolt	Supplied T-bolt	T-slot size	$d_1 \times l_6$	h_1	h_2	l_2	l_3	l_4	l_5	t_1	w_1	$w_2 \times l_1$	w_3	Weight g
10420.W0010	One	M 8					12	22	13	8	10	2	25	9x60	10	104
10420.W0020	One	M10					15	30	15	10	12	2	30	11x80	12	211
10420.W0030	One	M12, M14					20	40	21	12	15	3	40	14x100	14	461
10420.W0040	One	M16, M18					25	45	26	16	20	3	50	18x125	18	917
10420.W0011	Two	M 8			M 8x40	8-23	12	22	13	8	10	2	25	9x60	10	150
10420.W0012	Two	M 8			M 8x60	8-43	12	22	13	8	10	2	25	9x60	10	160
10420.W0021	Two	M10			M10x60	10-38	15	30	15	10	12	2	30	11x80	12	295
10420.W0022	Two	M10			M10x80	10-58	15	30	15	10	12	2	30	11x80	12	310
10420.W0031	Two	M12, M14			M12x60	10-31	20	40	21	12	15	2	40	14x100	14	590
10420.W0032	Two	M12, M14			M12x100	10-71	20	40	21	12	15	3	40	14x100	14	620
10420.W0041	Two	M16, M18			M16x80	12-42	25	45	26	16	20	3	50	18x125	18	1150
10420.W0042	Two	M16, M18			M16x125	12-87	25	45	26	16	20	3	50	18x125	18	1220
10420.W0015	Three	M 8	M 8x8x50	7,6	M 8x40	8-16	12	22	13	8	10	3	25	9x60	10	200
10420.W0016	Three	M 8	M 8x8x80	7,6	M 8x60	8-43	12	22	13	8	10	2	25	9x60	10	220
10420.W0025	Three	M10	M10x10x65	9,6	M10x60	10-22	15	30	15	10	12	2	30	11x80	12	385
10420.W0026	Three	M10	M10x10x100	9,6	M10x80	10-58	15	30	15	10	12	2	30	11x80	12	420
10420.W0035	Three	M12, M14	M12x12x80	11,6	M12x60	10-28	20	40	21	12	15	2	40	14x100	14	740
10420.W0036	Three	M12, M14	M12x12x125	11,6	M12x100	10-71	20	40	21	12	15	3	40	14x100	14	805
10420.W0037	Three	M12, M14	M12x14x80	13,6	M12x60	10-26	20	40	21	12	15	3	40	14x100	14	755
10420.W0038	Three	M12, M14	M12x14x125	13,6	M12x100	10-71	20	40	21	12	15	3	40	14x100	14	820
10420.W0045	Three	M16, M18	M16x16x100	15,6	M16x80	12-31	25	45	26	16	20	3	50	18x125	18	1470
10420.W0046	Three	M16, M18	M16x16x160	15,6	M16x125	12-87	25	45	26	16	20	3	50	18x125	18	1630
10420.W0047	Three	M16, M18	M16x18x100	17,6	M16x80	12-32	25	45	26	16	20	3	50	18x125	18	1490
10420.W0048	Three	M16, M18	M16x18x160	17,6	M16x125	12-87	25	45	26	16	20	3	50	18x125	18	1650



10425

STANDARD MANUAL CLAMPING

Material

Clamp: steel, heat-treated and blackened.
Pads: brass or plastic.

Technical Notes

Clamp provided without clamping pads.

Mounting screws included with clamping pads.

Temperature should not exceed 250°C when using brass pad, or 0-50°C when using plastic pad.

Tips

Particularly suitable for clamping sensitive components; soft pads protect the work-piece.

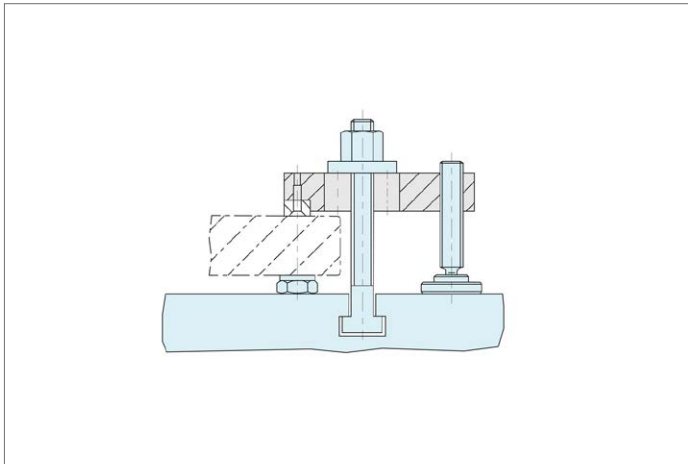
Order No.	Type	d ₁	d ₂	h ₁	h ₂	h ₃	h ₄	Weight g
10425.W0050	Clamp only	M 6	M 2	8	3	-	-	25
10425.W0051	Clamp only	M 6	M 2,5	10	4	-	-	45
10425.W0052	Clamp only	M 8	M 3	12	4	-	-	85
10425.W0053	Clamp only	M10	M 4	16	6	-	-	180
10425.W0054	Clamp only	M12	M 5	20	8	-	-	363
10425.W0055	Clamp only	M16	M 8	30	12	-	-	1445
10425.W0060	Brass pad	-	M 2	-	-	8	4	2.5
10425.W0061	Brass pad	-	M 2,5	-	-	10	6	7
10425.W0062	Brass pad	-	M 3	-	-	12	6	11
10425.W0063	Brass pad	-	M 4	-	-	16	9	25
10425.W0064	Brass pad	-	M 5	-	-	20	12	53
10425.W0065	Brass pad	-	M 8	-	-	30	16	193
10425.W0070	Plastic pad	-	M 2	-	-	8	4	0.7
10425.W0071	Plastic pad	-	M 2,5	-	-	10	6	1.6
10425.W0072	Plastic pad	-	M 3	-	-	12	6	2.7
10425.W0073	Plastic pad	-	M 4	-	-	16	9	6
10425.W0074	Plastic pad	-	M 5	-	-	20	12	13
10425.W0075	Plastic pad	-	M 8	-	-	30	16	48

Order No.	l ₁	l ₂	l ₃	l ₄	l ₅	l ₆	l ₇	l ₈	w ₁	w ₂	w ₃ +0.5	w ₄	A/F
10425.W0050	40	15.5	8	6	4	3.0	-	-	12	6	5.5	-	-
10425.W0051	50	22.0	10	8	5	4.0	-	-	16	9	7.0	-	-
10425.W0052	63	29.0	12	10	6	5.0	-	-	20	11	9.0	-	-
10425.W0053	80	36.0	15	13	8	6.5	-	-	25	14	11.0	-	-
10425.W0054	100	44.0	18	16	10	8.0	-	-	32	16	14.0	-	-
10425.W0055	160	63.0	30	28	16	14.0	-	-	50	30	18.0	-	-
10425.W0060	-	-	-	-	-	-	12	6	-	-	5.5	6	1.3
10425.W0061	-	-	-	-	-	-	16	9	-	-	7.0	8	1.5
10425.W0062	-	-	-	-	-	-	20	11	-	-	9.0	10	2.0
10425.W0063	-	-	-	-	-	-	25	14	-	-	11.0	13	2.5
10425.W0064	-	-	-	-	-	-	32	16	-	-	14.0	16	3.0



STANDARD MANUAL CLAMPING

Order No.	l_1	l_2	l_3	l_4	l_5	l_6	l_7	l_8	w_1	w_2	w_3 +0.5	w_4	A/F
10425.W0065	-	-	-	-	-	-	50	30	-	-	18.0	28	5.0
10425.W0070	-	-	-	-	-	-	12	6	-	-	5.5	6	1.3
10425.W0071	-	-	-	-	-	-	16	9	-	-	7.0	8	1.5
10425.W0072	-	-	-	-	-	-	20	11	-	-	9.0	10	2.0
10425.W0073	-	-	-	-	-	-	25	14	-	-	11.0	13	2.5
10425.W0074	-	-	-	-	-	-	32	16	-	-	14.0	16	3.0
10425.W0075	-	-	-	-	-	-	50	30	-	-	18.0	28	5.0

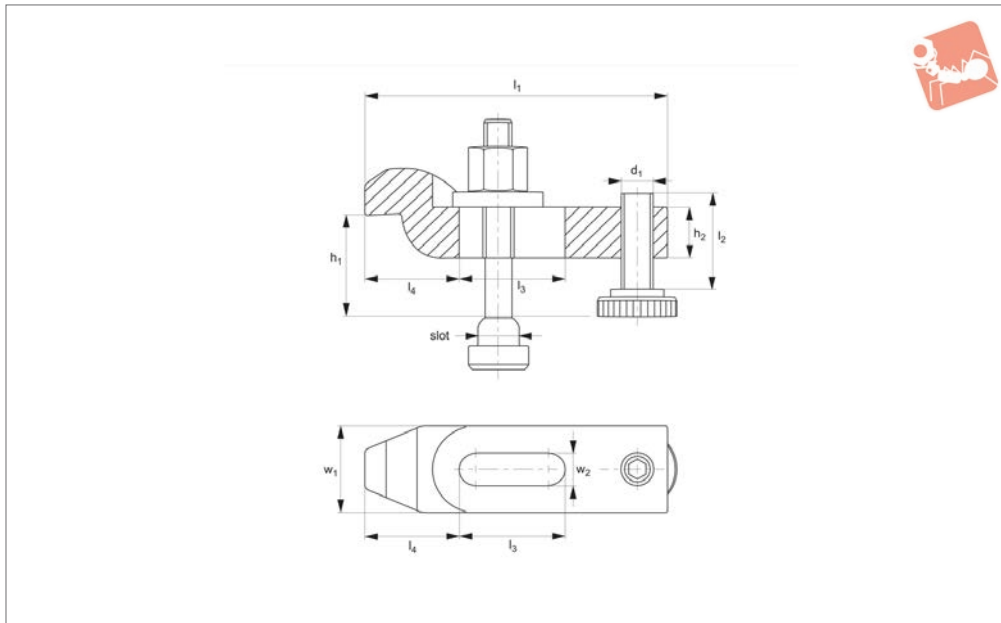




Adjustable Goose Neck Clamps with height adjusting screw



Standard
Manual Clam-



10500

STANDARD MANUAL CLAMPING

Material

Steel, heat-treated and enamelled.

Technical Notes

Type one: clamp, support screw and T-bolt set.

Type two: clamp and support screw only.

Dimension h_1 is dependent on depth of slot and position of fixture nut.

Tips

Often used for clamping press tools.

Used with:

10680 ratchet clamp lever, 21000 T-slot bolt, 24400 collar nut, 25000 plain washer.

Replacement parts:

Replacement support screw see part no. 10410.

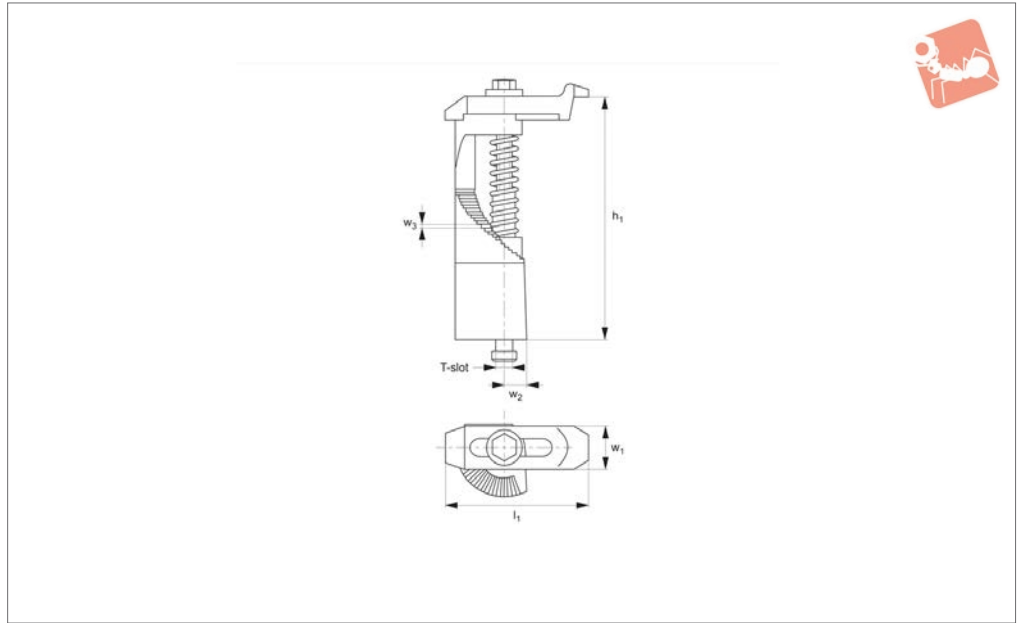
Important Notes

Particularly suited to clamping low work-pieces. The clamping height can be adjusted by means of the support screw.

Order No.	Type	For bolt	For T-slot	T-bolt	$d_1 \times l_2$	h_1	h_2	l_3	l_4	w_1	$w_2 \times l_1$	Weight g
10500.W0010	With bolt	M10	10	M10x10x80	M10x39	22-46	15	32	36.0	30	11x100	440
10500.W0012	With bolt	M12	12	M12x12x100	M12x49	28-58	20	40	44.0	40	14x125	906
10500.W0014	With bolt	M12	14	M12x14x100	M12x49	28-56	20	40	44.0	40	14x125	926
10500.W0016	With bolt	M16	16	M16x16x125	M16x55	36-71	25	50	51.5	50	18x160	1859
10500.W0018	With bolt	M16	18	M16x18x125	M16x55	36-69	25	50	51.5	50	18x160	1875
10500.W0020	With bolt	M20	20	M20x20x160	M20x69	43-92	30	70	59.0	60	22x200	3322
10500.W0022	With bolt	M22	22	M20x22x160	M20x69	43-92	30	70	59.0	60	22x200	3352
10500.W0110	W/o bolt	M10	-	-	M10x39	22-51	15	32	36.0	30	11x100	344
10500.W0112	W/o bolt	M12	-	-	M12x49	28-65	20	40	44.0	40	14x125	761
10500.W0116	W/o bolt	M16	-	-	M16x55	36-75	25	50	51.5	50	18x160	1516
10500.W0120	W/o bolt	M20	-	-	M20x69	43-92	30	70	59.0	60	22x200	2669
10500.W0124	W/o bolt	M24	-	-	M24x87	52-115	35	60	76.5	70	26x200	3810



10550



Material

Steel forged, thread quality 8.8.

Technical Notes

Clamping unit for quick action. The compact construction ensures a small foot-

print on the machine table. Allows clamping over a wide height range with minimum fuss.

* Clamping forces stated for minimum h_1

dimension.

Tips

Used with:
24000 T-nuts.

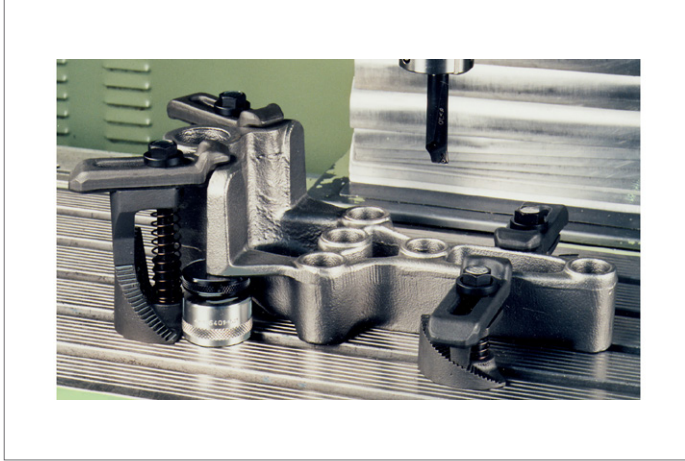
Order No.	Size	T-slot size	h_1	l_1	Tightening torque Nm	w_1	w_2	w_3	Clamping force kN max.	Weight g
10550.W0120	12-0	12	0-45	140	50	34	14	0.8	11.5	700
10550.W0121	12-1	12	15-45	112	50	34	14	0.8	11.4	600
10550.W0122	12-2	12	30-75	112	50	34	15	1.3	11.4	800
10550.W0123	12-3	12	60-135	112	50	34	16	2.5	11.4	1200
10550.W0124	12-4	12	120-195	112	50	34	18	2.5	11.4	1700
10550.W0125	12-5	12	180-255	112	50	34	19	2.5	11.4	2200
10550.W0126	14-0	14	0-45	140	80	34	14	0.8	15.5	700
10550.W0127	14-1	14	15-45	112	80	34	14	0.8	15.3	600
10550.W0128	14-2	14	30-75	112	80	34	15	1.3	15.3	800
10550.W0129	14-3	14	60-135	112	80	34	16	2.5	15.3	1200
10550.W0130	14-4	14	120-195	112	80	34	18	2.5	15.3	1700
10550.W0131	14-5	14	180-255	112	100	34	19	2.5	15.3	2200
10550.W0132	16-0	16	0-70	160	100	50	20	1.3	15.3	1900
10550.W0133	16-1	16	25-70	125	100	50	20	1.3	16.3	1700
10550.W0134	16-2	16	50-120	125	100	50	21	2.5	16.3	2500
10550.W0135	16-3	16	100-220	125	100	50	21	3.8	16.3	3540
10550.W0136	16-4	16	200-320	125	100	50	24	3.8	16.3	4900
10550.W0137	18-0	18	0-70	160	130	50	20	1.3	17.8	1870
10550.W0138	18-1	18	25-70	125	130	50	20	1.3	19.0	1670
10550.W0139	18-2	18	50-120	125	130	50	21	2.5	19.0	2500
10550.W0140	18-3	18	100-220	125	130	50	21	3.8	19.0	3580
10550.W0141	18-4	18	200-320	125	130	50	24	3.8	19.0	4720



Adjustable Step Pillar Clamps with goose neck



Standard
Manual Clam-



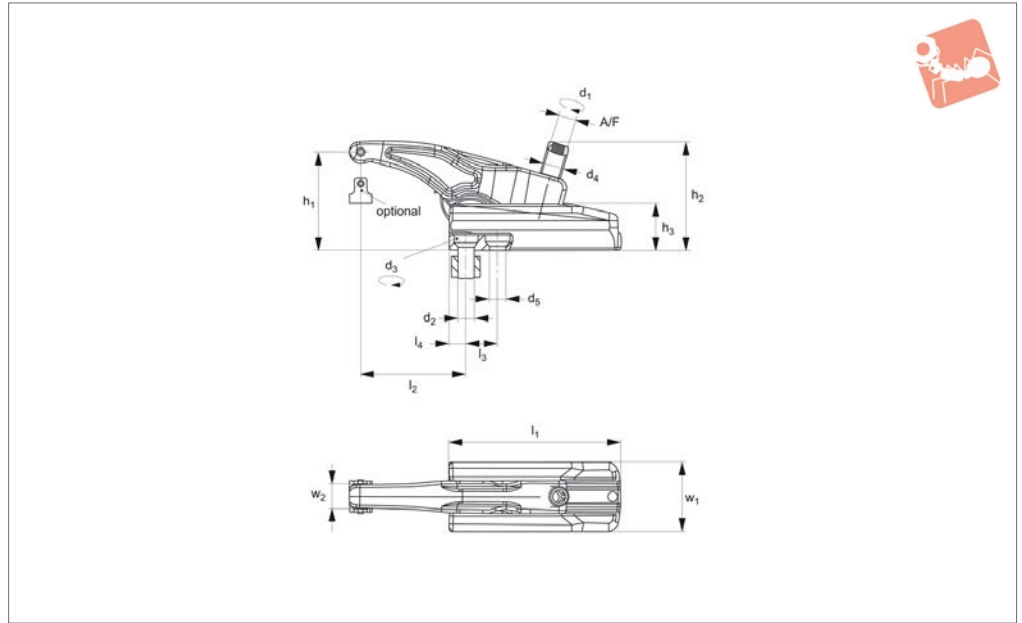
STANDARD MANUAL CLAMPING



STANDARD MANUAL CLAMPING



10588.1



Material

Steel, tempered, alloyed and galvanised (black).

Technical Notes

Complete with mounting kit.
Powerful, adjustable height clamp for

milling, press tools and injection mould applications. Clamping force 22 kN to 49 kN depending on size. Low height readily adjustable. Smooth or ribbed clamping pad available. For use in threaded holes (M10, M12, M16, M20) and 12-28mm T-slot

bases.

Tips

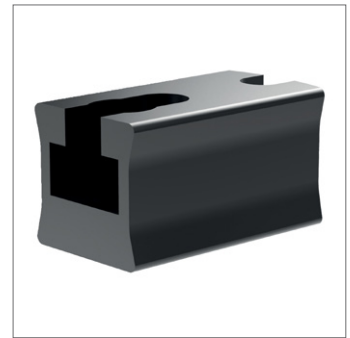
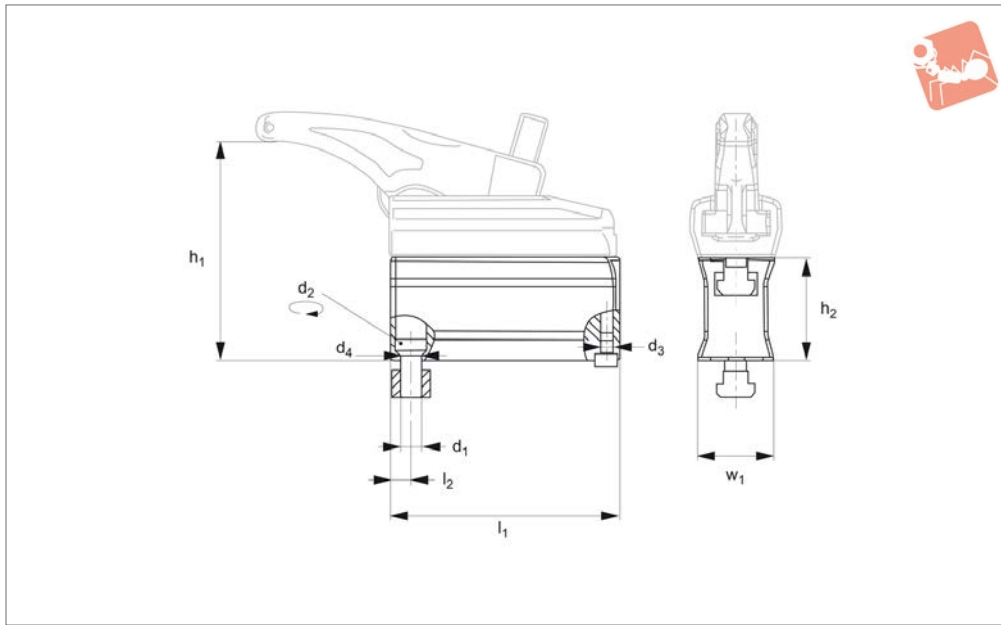
Torque the screws to the correct specified torque. Clamping force depends on thread lubrication and thread condition.

Order No.	Size	For slot	d ₂	d ₄	d ₅	h ₁ min. max.	h ₂	h ₃	l ₁	l ₂	l ₃	l ₄	Torque to d ₁ Nm max.	Torque to d ₃ Nm max.	w ₁	w ₂	A/F	Load capacity for static load kN max.	Weight g
10588.W0022	22	12	M10	M12	13	5-38	58	30	65	15-50		11	50	35	45	13	6	22	700
10588.W0023	22	14	M12	M12	13	5-38	58	30	65	15-50		11	50	40	45	13	6	22	700
10588.W0030	30	14	M12	M16	13	6-68	85	36	135	13-110	25	13	100	70	54	18	8	30	2013
10588.W0031	30	18	M16	M16	17	6-68	85	36	135	16-114	28	16	100	150	54	18	8	30	2045
10588.W0032	32	14	M12	M16	13	6-50	78	36	95	12-82	20	12	120	70	54	18	8	32	1462
10558.W0040	40	18	M16	M20	17	6-50	92	42	110	15-95	26	15	150	150	60	20	10	40	2262
10558.W0043	43	18	M16	M20	17	5-80	105	42	155	16-134	32	16	220	150	60	20	10	43	3158
10558.W0049	49	22	M20	M24	21	7-88	125	52	175	19-165	36	19	220	200	75	25	12	49	5928



Spacer Element

for power clamp 10588.W0022 - W0049



10588.2

STANDARD MANUAL CLAMPING

Material

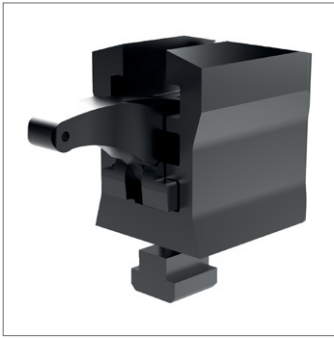
Steel, tempered and galvanised (black).

Further space elements could be added to achieve required clamping height.

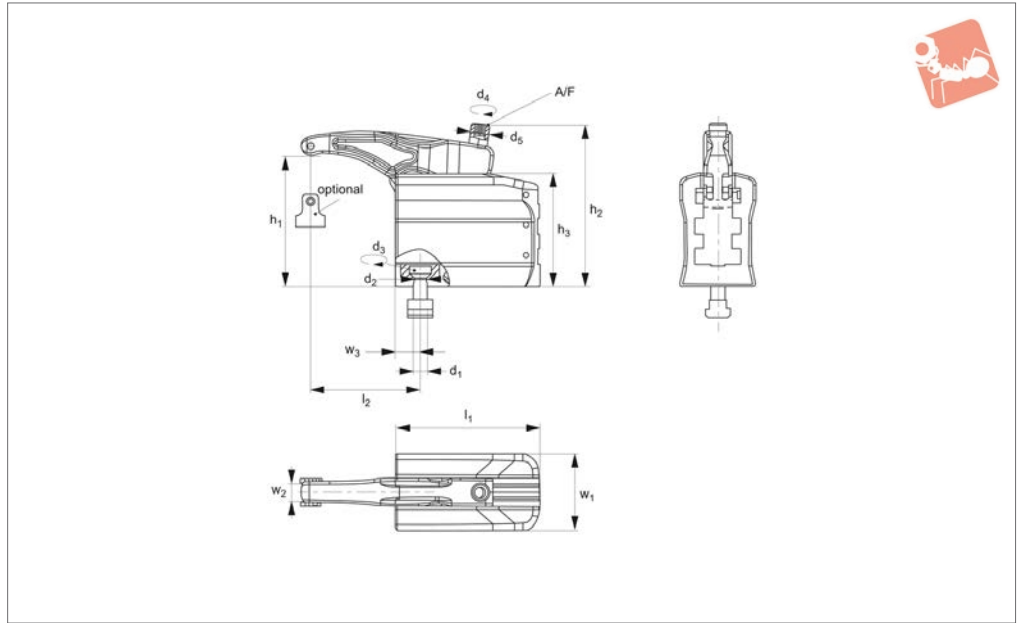
Technical Notes

Spacer element only and bolts.

Order No.	Size	For T-slot	d ₁	d ₂	d ₃	d ₄	h ₁ min. max.	h ₂	l ₁	l ₂	w ₁	Weight g
10588.W0122	22	12	M10	35	M 6	14	40-73	35	65	12	36.0	480
10588.W0123	22	14	M12	40	M 6	13	40-73	35	65	12	36.0	480
10588.W0130	30	14	M12	70	M 8	13	66-128	60	135	12	44.5	2300
10588.W0132	32	14	M12	70	M 8	13	66-110	60	95	12	44.5	1570
10588.W0140	40	18	M16	150	M 8	17	76-120	70	110	16	47.5	2290
10558.W0143	43	18	M16	150	M 8	17	75-150	70	155	16	47.5	3344
10558.W0149	49	22	M20	200	M10	21	87-168	80	175	19	58.0	5286



10588.3



Material

Steel, tempered, alloyed and galvanised (black).

Technical Notes

Complete with three-step support element, clamping unit and mounting kit.

Tips

Three step clamping:

1. Position clamp on table and tighten to correct torque.
2. Adjust the clamping arm.
3. Tighten the clamping screw to clamp

part (tighten to correct torque).

Important Notes

Not suitable for use on injection moulding, die casting machines or presses.

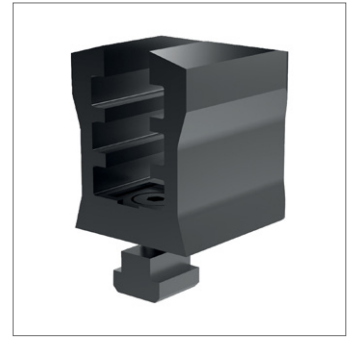
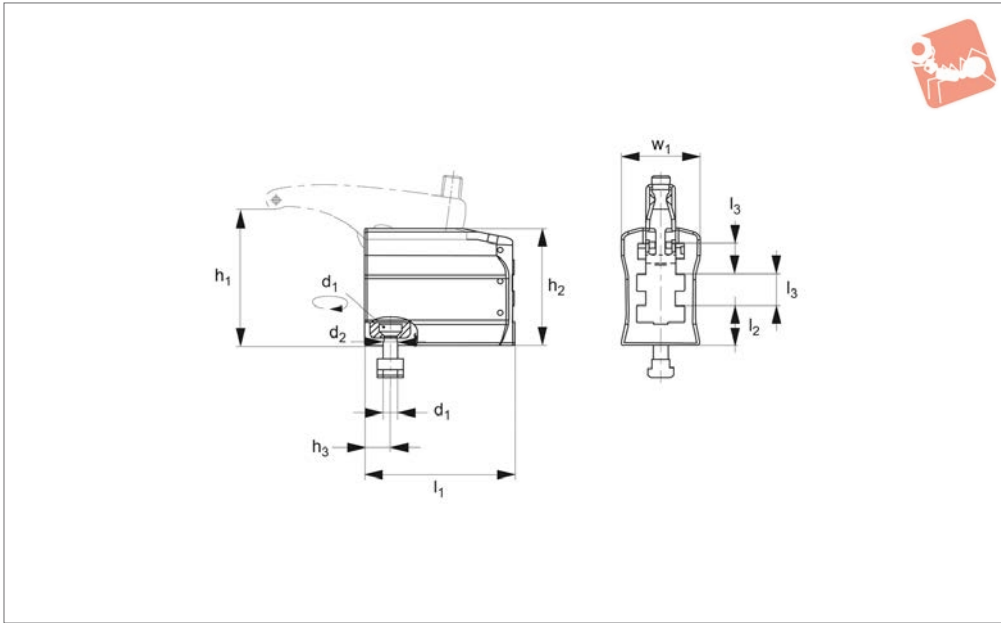
Order No.	Size	For T-slot	d ₁	d ₃	d ₅	h ₁ min. max.	h ₂	h ₃	l ₁	l ₂	Torque to d ₂ Nm max.	Torque to d ₄ Nm max.	w ₁	w ₂	w ₃	A/F	Load capacity for static load kN max.	Weight g
10588.W0222	22	14	M12	40	M12	9-74	98	67	65	30-58	13,5	55	52	13	14,5	6	22	1120
10588.W0230	30	14	M12	70	M16	13-129	146	101	130	37-106	13,5	100	68	18	22,5	8	30	4600
10588.W0243	43	18	M16	150	M20	16-147	175	116	150	48-114	17,5	200	75	20	25,0	10	43	6844
10558.W0249	49	22	M20	200	M24	16-169	207	140	170	68-172	22,0	220	85	25	29,0	12	49	10870



Spacer Element

for power clamp 10588.W0222 - W0249

Standard Manual Clam-



10588.4

STANDARD MANUAL CLAMPING

Material

Steel, tempered and galvanised (black).

ting kit. Unsuitable for injection moulding, die casting machines and presses.

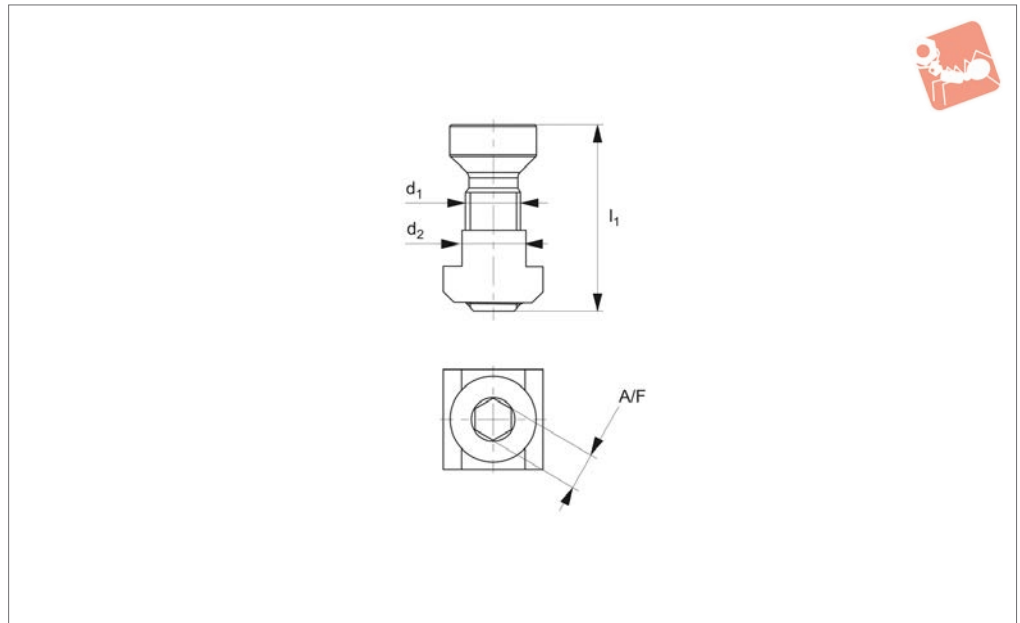
Technical Notes

Complete with pressure plate and moun-

Order No.	Size	For T-slot	d ₁	d ₂	h ₁	h ₂	h ₃	l ₁	l ₂	l ₃	Torque to Nm max.	w ₁	Weight g
10588.W0322	22	14	M12	13.5	9-74	65	14.5	65	25	16	40	52	795
10588.W0330	30	14	M12	13.5	13-129	101	22.5	130	34	27	70	68	3440
10588.W0343	43	18	M16	17.5	16-147	116	25.0	150	43	29	150	75	5010
10558.W0349	49	22	M20	22.0	16-169	138	29.0	170	52	34	200	85	7710



10588.5



Material

Steel, heat-treated.

Technical Notes

Fastening screw strength class 12.9 and T-slot nut DIN 508.

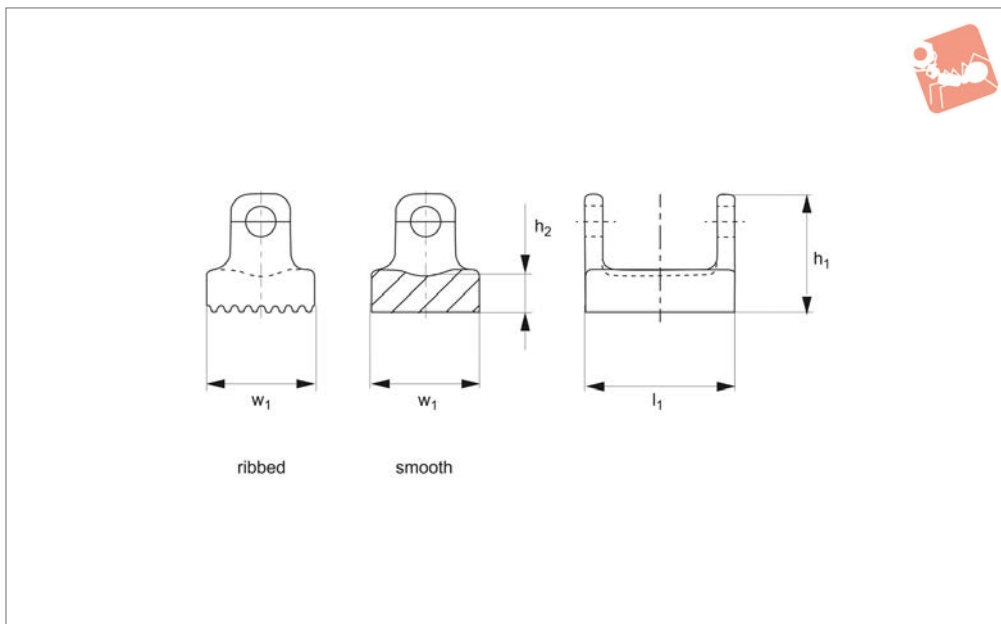
Order No.	Size	d ₁	d ₂	l ₁	A/F	Weight g
10588.W2212	22	M10	12	29.0	6	61
10588.W2214	22	M12	14	31.5	6	61
10588.W2215	22	M12	14	35.5	6	40
10588.W3014	30/32	M12	14	34.0	8	70
10588.W3016	30/32	M12	16	38.0	8	98
10588.W3018	30/32	M12	18	38.0	8	125
10588.W3019	30	M12	14	41.0	8	78
10588.W3118	30	M16	18	41.0	8	143
10588.W3120	30	M16	20	45.0	8	208
10588.W3122	30	M16	22	49.0	8	270
10588.W3124	30	M16	24	49.0	8	348
10588.W4018	40/43	M16	18	43.0	10	145
10588.W4020	40/43	M16	20	47.0	10	195
10588.W4022	40/43	M16	22	51.0	10	264
10588.W4024	40/43	M16	24	51.0	10	350
10588.W4319	43	M16	18	52.0	10	160
10558.W4922	49	M20	22	52.0	12	300
10558.W4923	49	M20	22	66.0	12	330
10558.W4924	49	M20	24	55.0	12	390
10558.W4928	49	M20	28	62.0	12	505



Pressure Pad

for power clamp 10588.W0022 - W0049

Standard Manual Clam-



10588.6

STANDARD MANUAL CLAMPING

Material

Stainless steel.

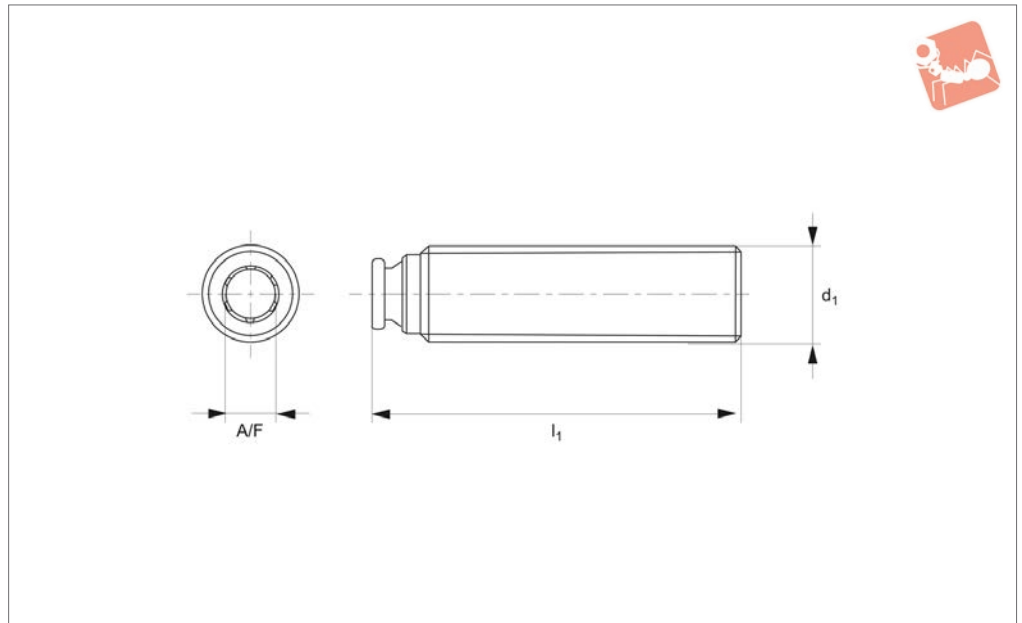
Technical Notes

Complete with pin.

Order No.	Size	Form	h_1	h_2	l_1	w_1	Weight g
10588.W0701	22	Smooth	14.0	4.5	19	12	11
10588.W0702	30/32	Smooth	19.5	6.0	25	18	28
10588.W0703	40/43	Smooth	24.0	6.5	30	20	47
10588.W0704	49	Smooth	28.0	7.0	36	25	75
10588.W0711	22	Ribbed	14.0	4.5	19	12	10
10558.W0712	30/32	Ribbed	19.5	6.0	25	18	27
10588.W0713	40/43	Ribbed	24.0	6.5	30	20	48
10558.W0714	49	Ribbed	28.0	7.0	36	25	78



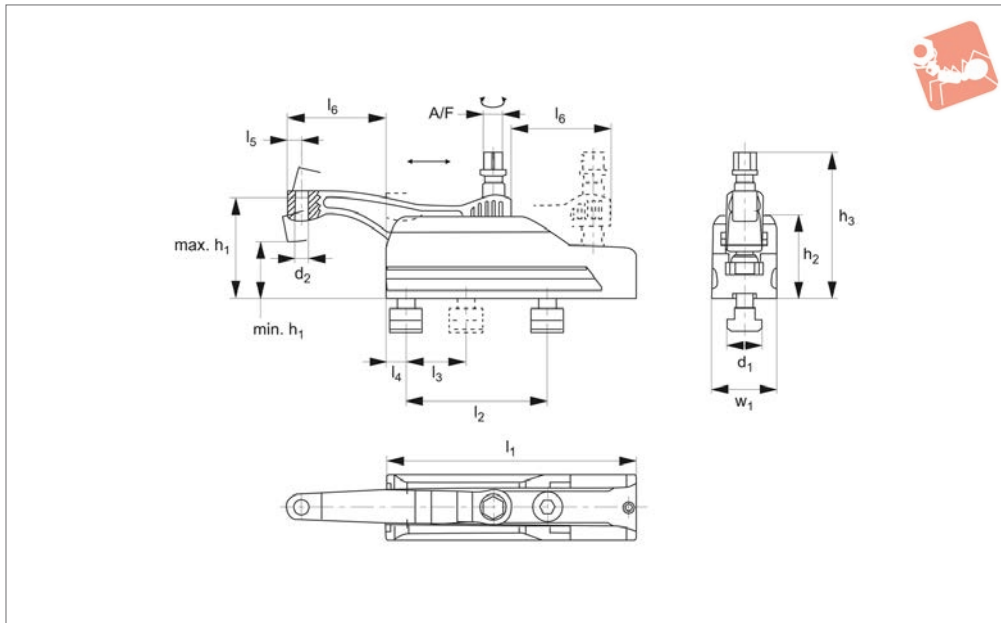
10588.7



Material

Steel, tempered and burnished.

Order No.	Size	d ₁	l ₁	A/F	Weight g
10588.W0823	22	M12	43	6	30
10588.W0830	30	M16	62	8	80
10588.W0832	32	M16	55	8	70
10588.W0840	40	M20	65	10	128
10588.W0843	43	M20	78	10	165
10558.W0849	49	M24	93	12	275



10592.1

STANDARD MANUAL CLAMPING

Material

Body: steel, heat-treated and black coated.
Lever: steel, heat-treated and silver coated.

Technical Notes

Assembly and set-up:

1. Take out stop pin ISO 4762-M 6 x 10.
2. Move back and take out clamping lever.

3. Tightening by two screws with internal hexagon (included).

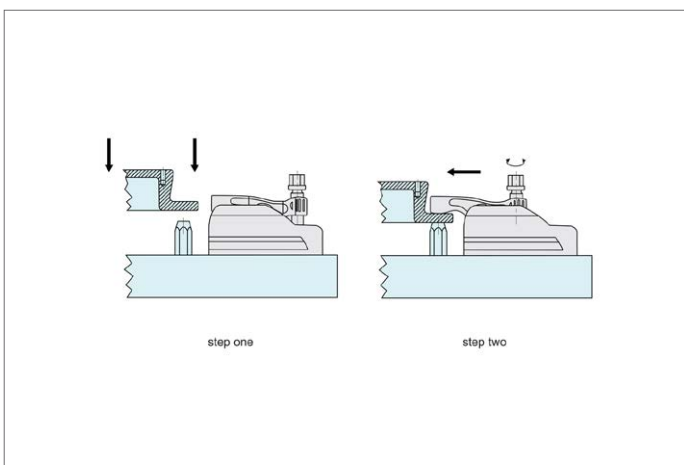
4. Place clamping lever in sliding rail.
5. Tighten clamping screw to torque required.

Tips

The clamps are corrosion resistant, provide easy clamping of varied heights with

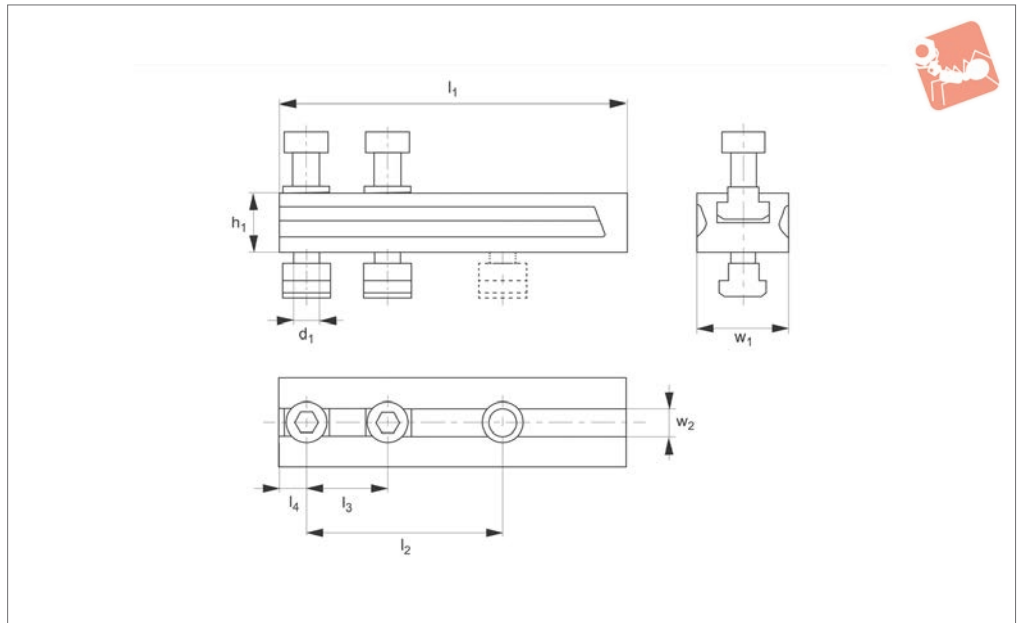
strong clamping forces. The self-locking clamping lever allows the clamp to be used in horizontal or vertical orientations. Slide back the clamping lever to allow access to parts. Corrosion resistant coating is applied to the spacer elements (see order no's 10592.W0112 and 10592.W0116).

Order No.	d ₁	d ₂	h ₁ min.	h ₁ max.	h ₂	h ₃	l ₁	l ₂ +1	l ₃	l ₄	l ₅	l ₆ max.	Tightening torque Nm max.	w ₁	A/F	Clamping force kN max.	Weight g
10592.W0012	M12	M 8	40	60	59	95	134	70	50	13	10,0	43	45	45	16	15	1813
10592.W0016	M16	M12	47	85	70	126	213	120	50	17	12,5	85	75	55	18	25	4274





10592.2



Material

Steel, heat-treated, black coated.

Technical Notes

The height adapter for compact clamps

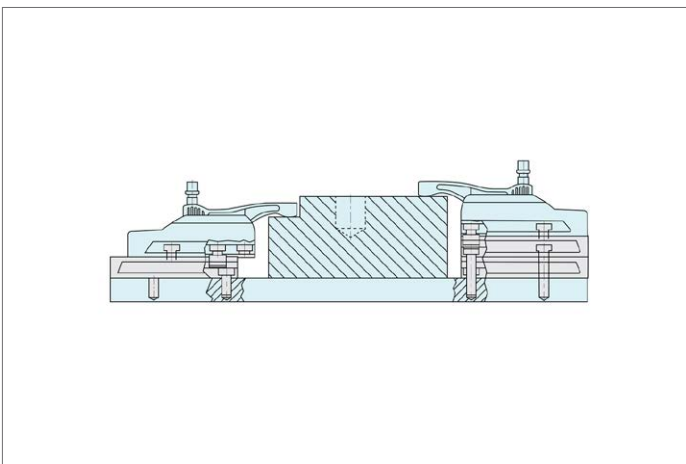
allows a clamping height increase.

Tips

When using multiple height adapters, the screws ISO 10642 or DIN 7984 have to be

replaced by screws extended by the dimension h_1 .

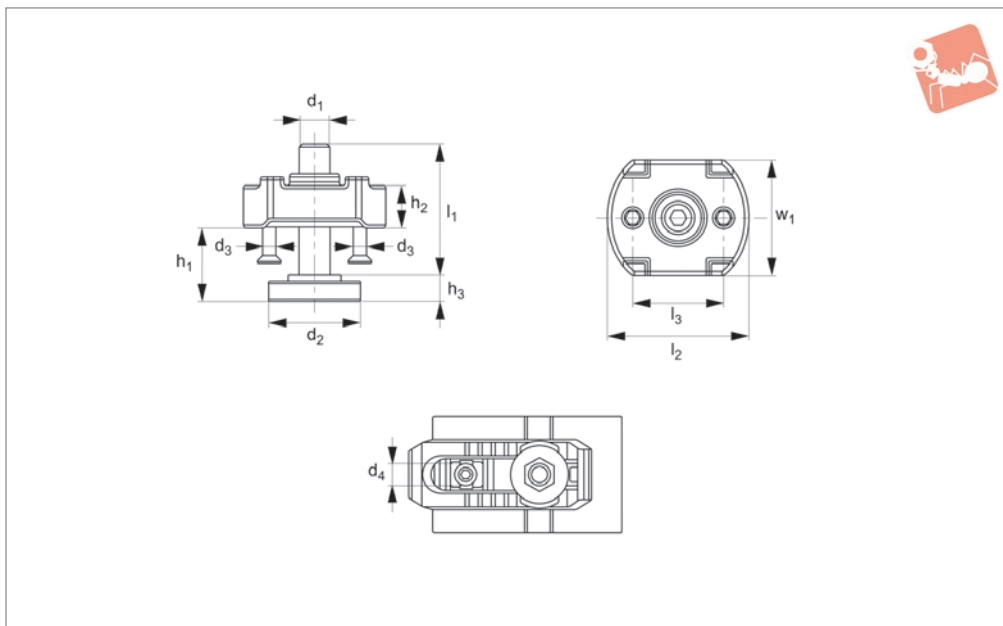
Order No.	d_1	h_1	l_1	l_2 +1	l_3	l_4	w_1	w_2 tol. H12	Weight g
10592.W0112	M12	20	134	70	50	13	45	14	874
10592.W0116	M16	35	213	120	50	17	55	18	2534





Support Extension for crocodile clamp 10603

Standard Manual Clam-



10604

STANDARD MANUAL CLAMPING

Material

Body and support screw: steel, zinc plated and hardened. Strength class 8.8.

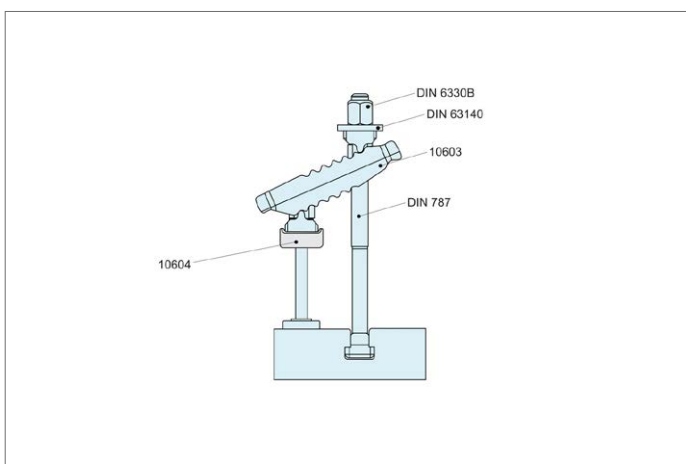
counterhold of the crocodile clamp to increase the clamping height.

Technical Notes

The support extension is screwed to the

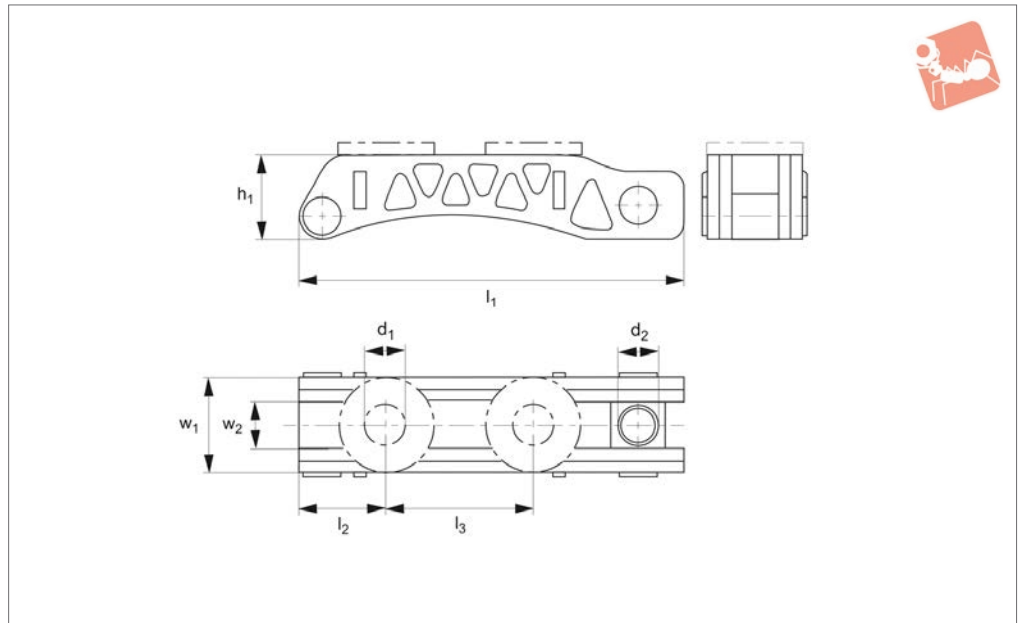
Tips
Allows continuous adjustment of clamping heights.

Order No.	$d_1 \times l_1$	d_2	d_3	d_4	h_1 min. max.	h_2	h_3	l_2	l_3	w_1	Weight g
10604.W0010	M10x39	30	M 5	13	8-30	10	8	44	30	30	197
10604.W0016	M12x49	36	M 5	17	10-37	16	10	54	35	42	433
10604.W0018	M12x94	36	M 5	17	10-80	16	10	54	35	42	473
10604.W0020	M16x55	42	M 5	21	13-41	20	13	60	40	50	608
10604.W0022	M16x90	42	M 5	21	13-73	20	13	60	40	50	640
10604.W0025	M20x69	50	M 6	25	16-52	25	16	70	50	50	1136
10604.W0027	M20x109	50	M 6	25	16-91	25	16	70	50	50	1396





10610.1



Material

Steel, tempered and burnished.

Technical Notes

The weight saving device allows a 50%

reduction in weight with no effect on clamping force that can be applied. Useful for rotating applications.

Tips

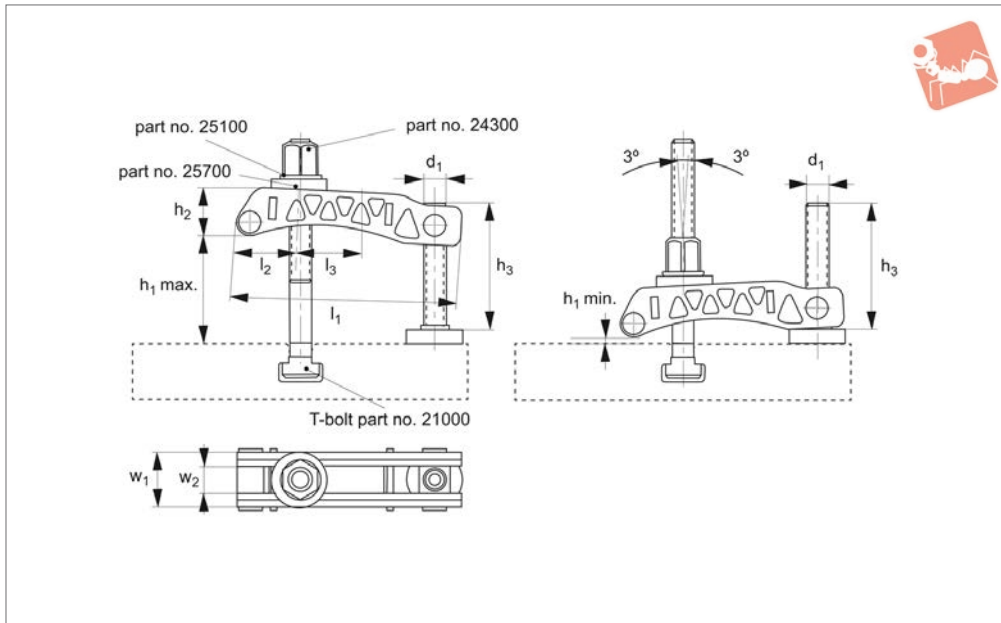
For clamping, T-bolts no. 21000 (DIN 787), studs no. 21100 (DIN 6379) and cheese head screws (ISO 4762) can be used.

Order No.	Size	For clamping screw	d ₁	d ₂	h ₁	l ₁	l ₂	l ₃	w ₁	w ₂	Weight g
10610.W0022	22	M20, M22	22	M20	44	200	45	77	49	25	1289
10610.W0026	26	M24	26	M24	44	250	46	116	54	30	1630
10610.W0033	33	M30	33	M30	71	315	59	152	72	40	4522
10610.W0043	43	M36, M42	43	M30	80	400	74	209	102	54	9709



Scalloped Clamp with adjustable support screw

Standard
Manual Clam-



10610.2

STANDARD MANUAL CLAMPING

Material

Steel, tempered and burnished.

Technical Notes

The weight saving device allows a 50% reduction in weight with no effect on clam-

ping force that can be applied. Useful for rotating applications.

Tips

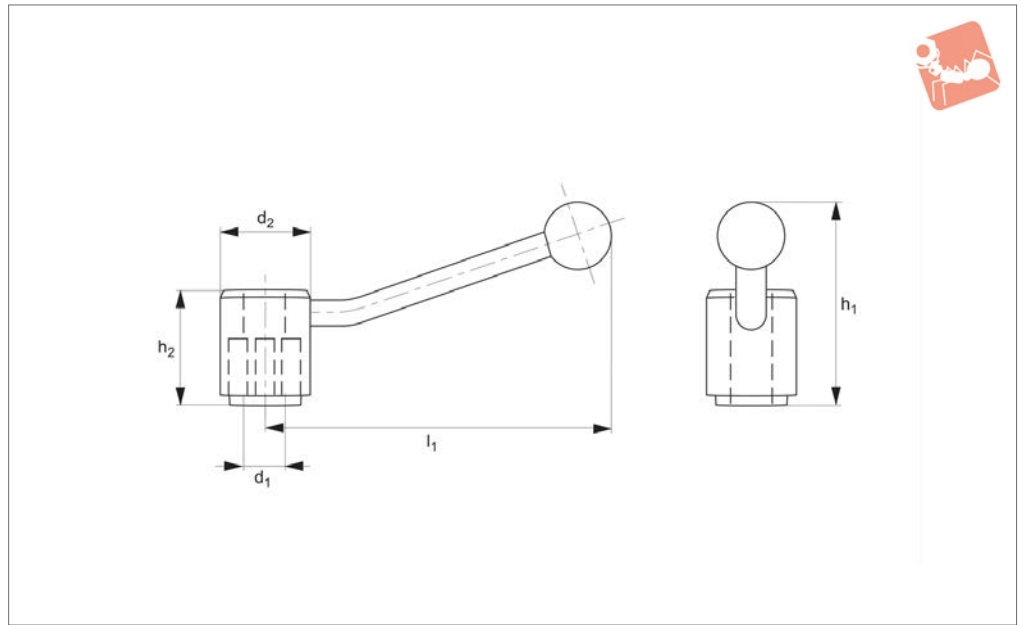
For clamping, clamping screws (DIN 21000), stud bolts (DIN 21100) and cheese

head screws (ISO 4762) can be used. h_1 is dependent on the depth of the slot and position of the fixture nut.

Order No.	Size	For T-slot	With T-bolt	$d_1 \times h_2$	h_1 min. max.	h_3	l_1	l_2	l_3	w_1	w_2	Weight g
10610.W0122	22	20	M20x20x160	M20x69	8-58	44	200	45	77	49	25	2434
10610.W0123	22	20	M20x20x200	M20x109	8-98	44	200	45	77	49	25	2531
10610.W0126	26	24	M24x28x200	M24x87	10-81	44	250	46	116	54	30	3779
10610.W0127	26	24	M24x28x250	M24x137	10-130	44	250	59	116	54	30	3884
10610.W0133	33	36	M30x36x315	M30x180	7-214	71	315	59	152	72	40	9044
10610.W0143	43	48	M36x42x400	M30x180	7-153	80	400	74	209	102	54	17560



10680



Material

Steel, burnished.

clamps, but particularly useful for part nos. 10400, 10500 and 10620. without the need for spanners.

Technical Notes

For use as quick acting lever for most

Tips

The ratchet action allows quick clamping

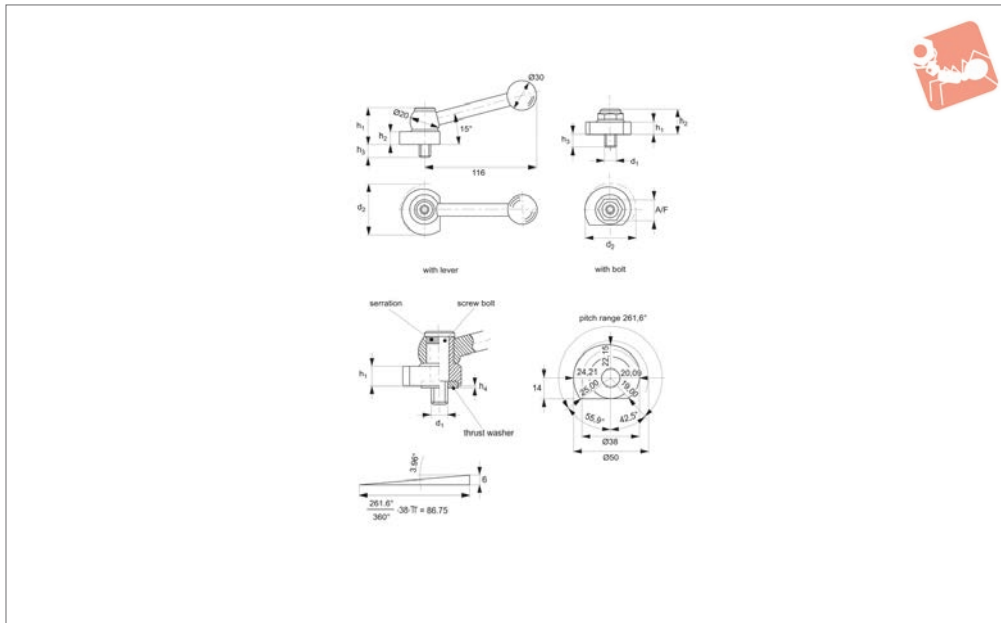
Order No.	d_1	d_2	h_1	h_2	l_1	Weight g
10680.W0012	M12	33	83	48	135	360
10680.W0016	M16	40	105	64	158	620



Eccentric Clamps - Side Action

steel or stainless steel

Standard Manual Clam-



12500

STANDARD MANUAL CLAMPING

Material

Steel Type:

Body: steel, blackened. Spiral eccentric and washer case hardened.

Screw: bolt nitrated.

Ball knob: DIN 319 black plastic, (PF31).

Stainless Steel Type:

Body: stainless steel 1.4305 (AISI 303), nickel plated.

Screw: stainless steel 1.4021, heat-

treated, nickel plated.

Ball knob: DIN 319 black plastic, (PF31).

Technical Notes

The screw bolt and washer can be pre-set together so that the clamp can be easily rotated to any position - by means of the serrations. By removing the washer the clamp can also be used as an infinitely adjustable stop.

Tips

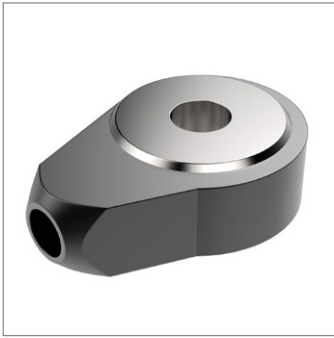
No. 12500 eccentric clamp, clamps from the SIDE.

Left hand acting version available on request.

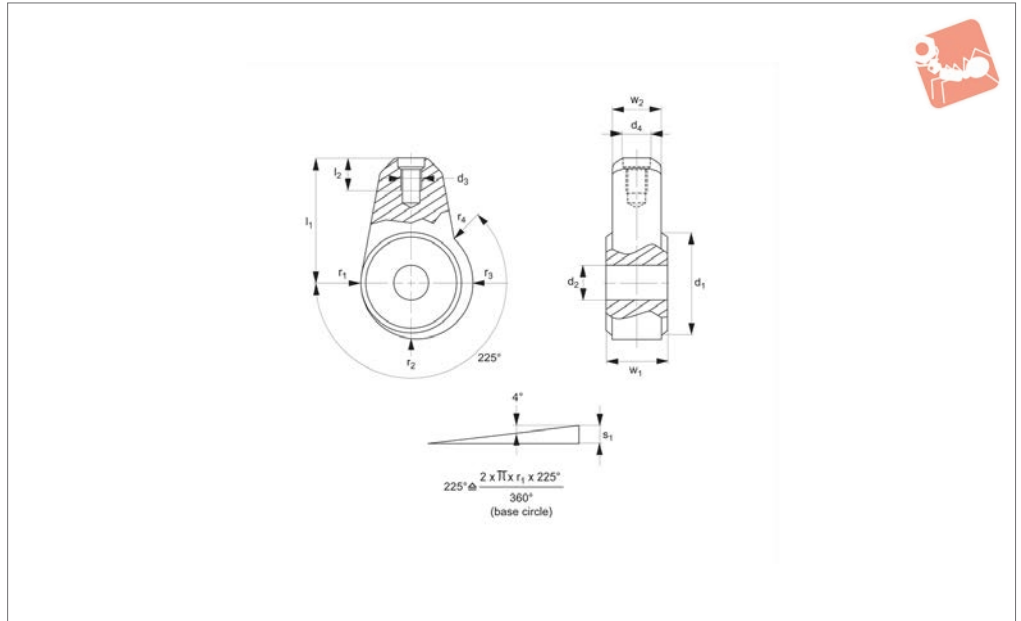
No. 12520 clamping catch, clamps from ABOVE or BELOW.

Left hand acting version can be supplied on request.

Order No.	Material	d ₁	h ₁	d ₂	h ₂	h ₃	h ₄	Type	A/F	Clamping surface	Weight g
12500.W0050	Steel	M10	34.5	50	12	11	0.2	With Lever	-	Side	317
12500.W0150	Steel	M10	24.0	50	12	11	0.2	With Bolt	19	Side	159
12500.W0051	Stainless Steel	M10	34.5	50	12	11	0.2	With Lever	-	Side	317
12500.W0151	Stainless Steel	M10	25.0	50	12	11	0.2	With Bolt	19	Side	159



12505



STANDARD MANUAL CLAMPING

Material

Body: sintered steel, case hardened.

clamping force and are self-locking in any position. Use in conjunction with gear lever handle part 74600.

Technical Notes

These eccentric clamps provide constant

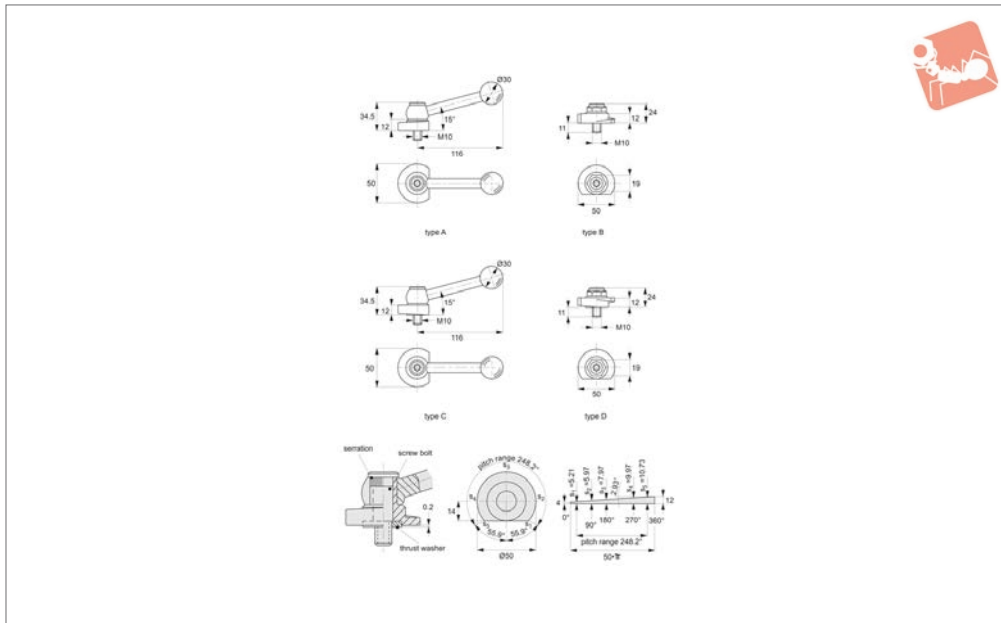
Order No.	w_1 -0.05 -0.15	w_2	l_1	d_1	d_2 tol. h9	d_3	d_4	Corres. handle dia. 74600	l_2	r_1	r_2	R_3	r_4	Stroke s_1	Weight g
12505.W0210	13	11	28	24	8	M 6		8	9	12.0	13.3	14.6	15.3	3.3	50
12505.W0220	15	13	32	30	10	M 8		10	12	15.0	16.7	18.3	19.1	4.1	100
12505.W0230	17	15	36	35	12	M10		12	15	17.5	19.4	21.3	22.3	4.8	150



Eccentric Clamps

top/bottom surface - steel or stainless steel

Standard Manual Clam-



12520

STANDARD MANUAL CLAMPING

Material

Steel Type:

Body: steel, blackened. Spiral eccentric and washer case hardened.

Screw: bolt nitrated.

Gear lever handle: steel, ground, blackened.

Ball knob: DIN 319 black plastic, (PF31).

Stainless Steel Type:

Body: stainless steel 1.4305 (AISI 303),

nickel plated.

Screw: stainless steel 1.4021, heat-treated, nickel plated.

Gear lever handle: stainless steel, 1.4305, dull blasted.

Ball knob: DIN 319 black plastic, (PF31).

Technical Notes

Through manually adjusting the setting of the clamping lever, the lever can be placed

in the most convenient position for clamping.

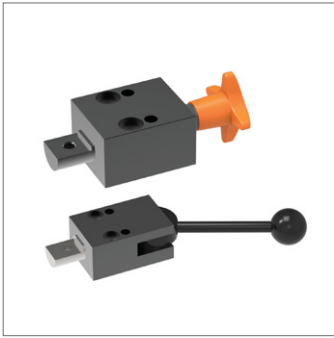
Tips

Type A & B - force generated from TOP of catch.

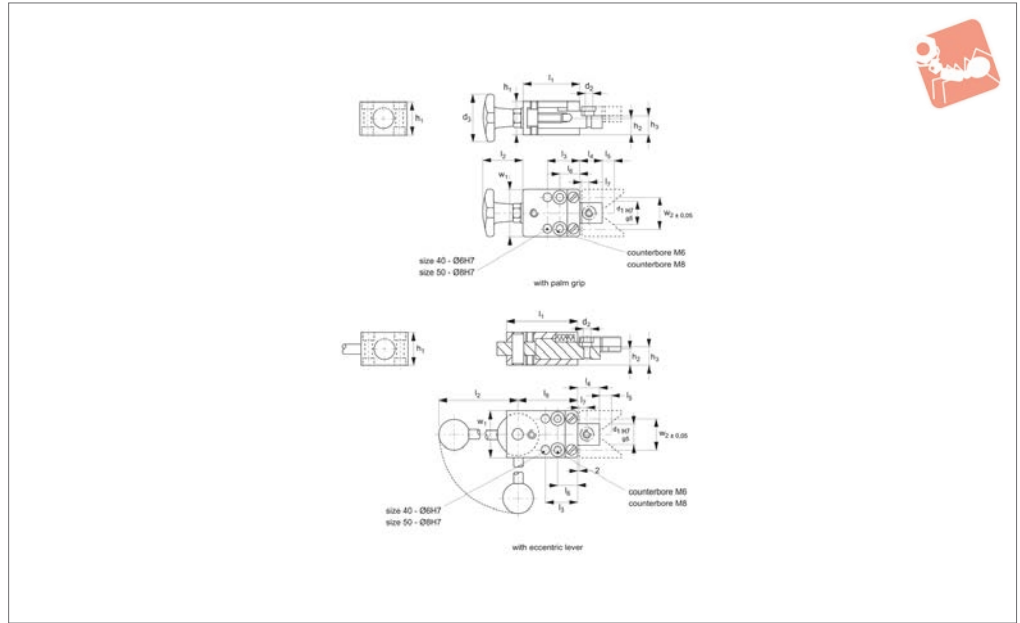
Type C & D - force generated from BOTTOM of catch.

Left hand acting version can be supplied on request.

Order No.	Material	Type	Clamping surface	Description	Weight g
12520.W0250	Steel	Type A	Top	Pitch Opposite to Bearing Surface	304
12520.W0350	Steel	Type B	Top	Pitch Opposite to Bearing Surface	154
12520.W0450	Steel	Type C	Bottom	Pitch on Bearing Surface	312
12520.W0550	Steel	Type D	Bottom	Pitch on Bearing Surface	154
12520.W0251	Stainless Steel	Type A	Top	Pitch Opposite to Bearing Surface	310
12520.W0351	Stainless Steel	Type B	Top	Pitch Opposite to Bearing Surface	154
12520.W0451	Stainless Steel	Type C	Bottom	Pitch on Bearing Surface	317
12520.W0551	Stainless Steel	Type D	Bottom	Pitch on Bearing Surface	153



17440



Material

Body: steel, case-hardened, ground and blackened.

Star grip: no. 70020 (orange).

Lever: no. 73000 (black).

Technical Notes

Suitable for simultaneous positioning and

clamping of workpieces.

The locating element is a precision element which can be assembled from either side.

Tips

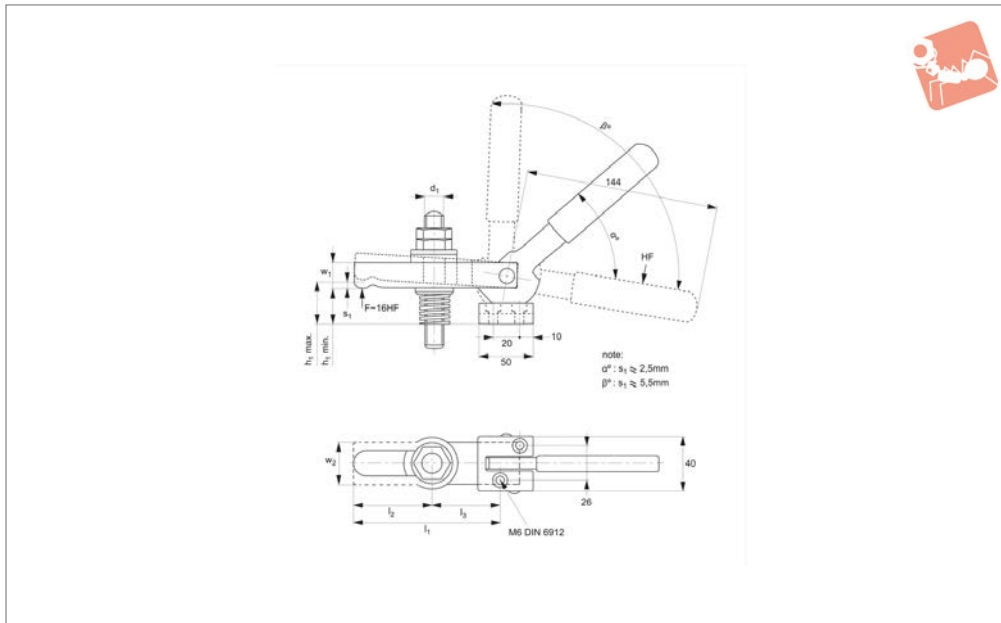
The clamping and fixing part (made by the user to suit the workpiece) is screwed onto the unit.

Order No.	w ₁	w ₂ ±0.05	l ₁	d ₁ tol. H7/g5	h ₁	d ₂	d ₃	h ₂	h ₃	l ₂	l ₃	l ₄	l ₅	l ₆	l ₇	l ₈	Type	Weight g
17440.W0040	40	27	50	18	29,8	M 6	40	14,9	16,9	33	28	19	9	17	8		With palm grip	505
17440.W0050	50	33	60	22	34,8	M 8	50	17,4	19,4	42	34	24	10	21	10		With palm grip	862
17440.W0440	40	27	60	18	29,8	M 6		14,9	16,9	96	28	19	3	17	8	50	Eccentric lever	566
17440.W0450	50	33	75	22	34,8	M 8		17,4	19,4	145	34	24	4	21	10	63	Eccentric lever	1071



Cam Clamps with clamp and bolt

Standard Manual Clam-



18000

STANDARD MANUAL CLAMPING

Material

Steel, heat-treated, burnished.

Actuation by hand requires force (HF) of 150N approximately.

tely 16x hand force (HF) applied.

Tips

Especially useful on component fixtures.

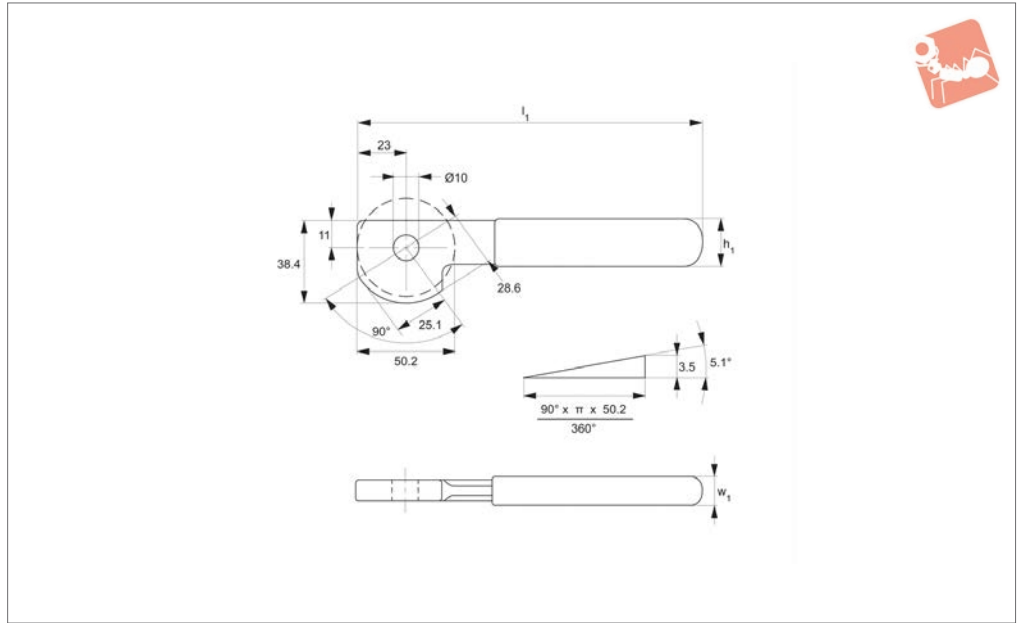
Important Notes

Clamping force (F) exerted is approxima-

Order No.	w ₁	w ₂	l ₁	d ₁	h ₁ min.	h ₁ max.	l ₂	l ₃	Weight g
18000.W0001	30	20	100	M12	26	35	21-43	37	1000
18000.W0002	40	20	125	M16	26	35	34-66	45	1400



18020



STANDARD MANUAL CLAMPING

Material

Steel, heat-treated.
Handle: plastic, coated.

Technical Notes

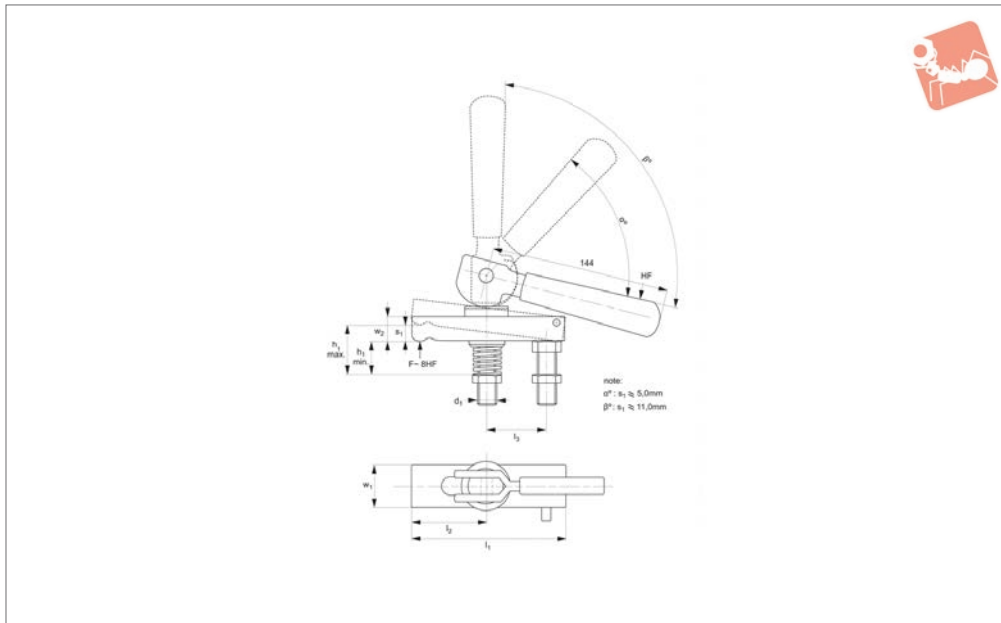
Cam lever for end clamping.

Order No.	w_1	l_1	h_1	Weight g
18020.W0001	14	167	24	300



Cam Clamps - Centre Acting with clamp and bolt

Standard
Manual Clam-



18040

STANDARD MANUAL CLAMPING

Material

Body: steel, heat-treated.
Handle: plastic, coated.

Tips

Actuation by hand requires force of approx-

imately 150N (HF).

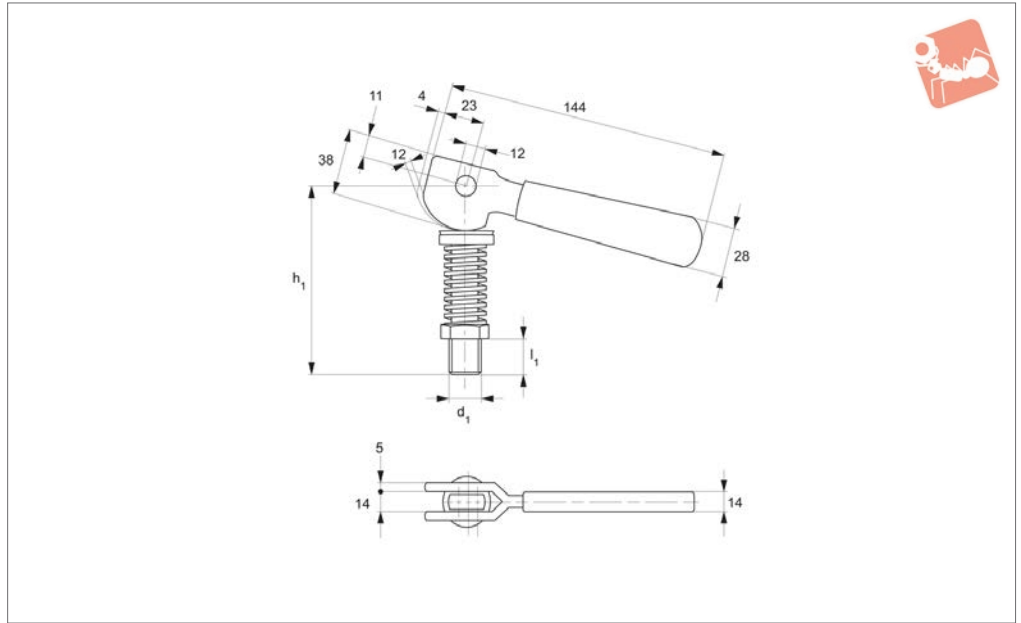
Important Notes

Clamping force (F) achieved is approximately 8x hand force (HF) applied.

Order No.	w ₁	w ₂	l ₁	d ₁	h ₁ min.	h ₁ max.	l ₂	l ₃	Weight g
18040.W0001	30	20	100	M12	30	45	21 - 43	32	1000
18040.W0002	40	20	125	M16	35	50	34 - 66	40	1450



18080



STANDARD MANUAL CLAMPING

Material

Lever: steel, heat-treated.
Handle: plastic, coated.

Technical Notes

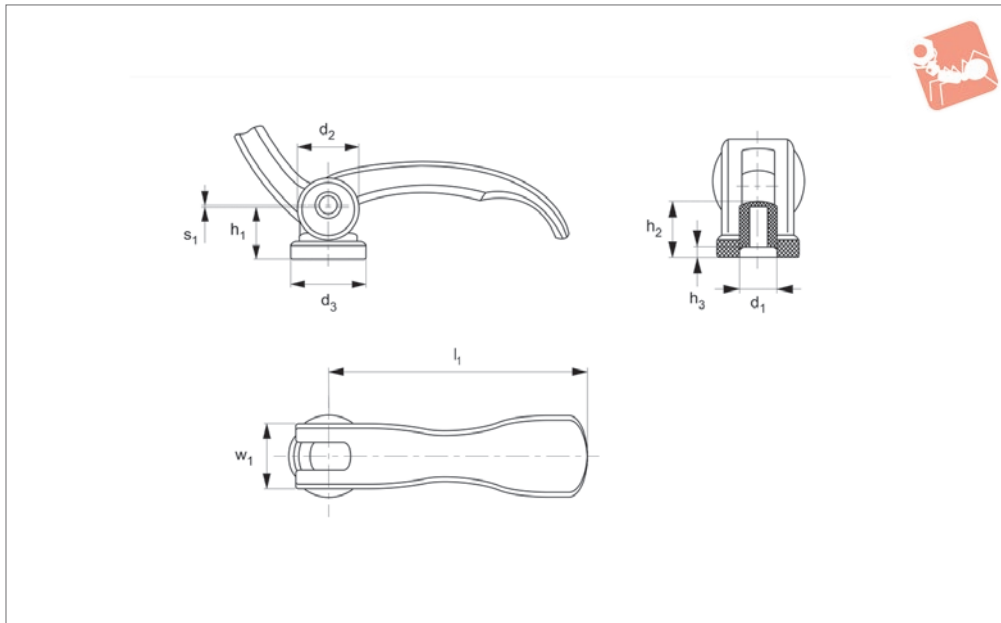
Cam lever for centre clamping.

Order No.	l_1	d_1	h_1	Type	Weight g
18080.W0001	25	M12	110	With Bolt	500
18080.W0002	30	M16	120	With Bolt	610
18080.W0100	-	-	-	Without Bolt	310



Cam Levers - Female fixed

Standard Manual Clam-



18580.1

STANDARD MANUAL CLAMPING

Material

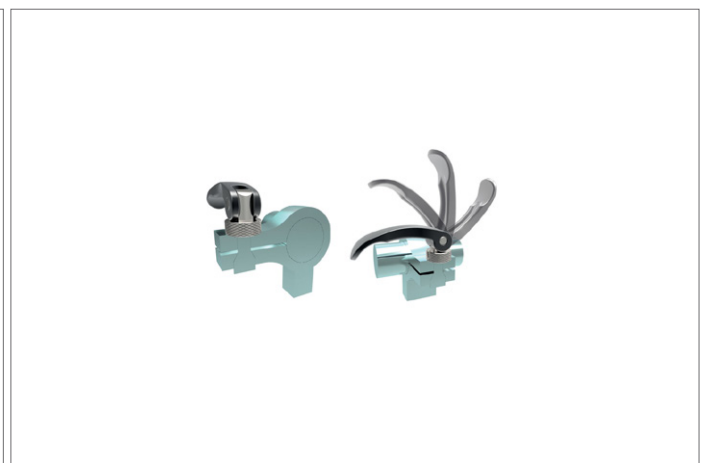
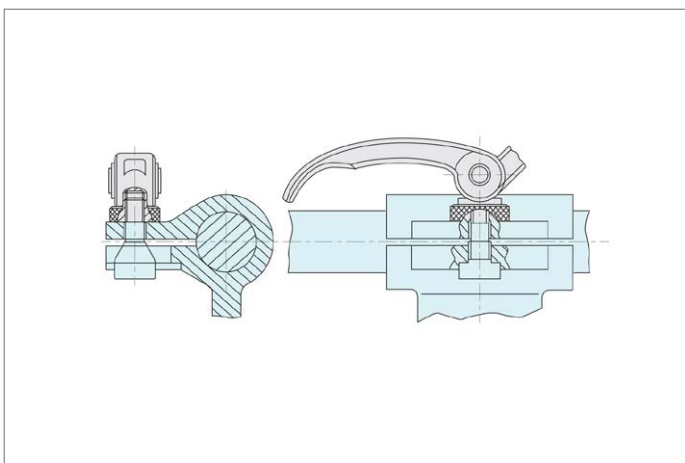
Handle: zinc die-cast, black plastic coated.
Threaded part, inner parts, adjusting nut: steel, galvanised or stainless 1.4305.

Bearing washer: glass reinforced, thermo-plastic.

Technical Notes

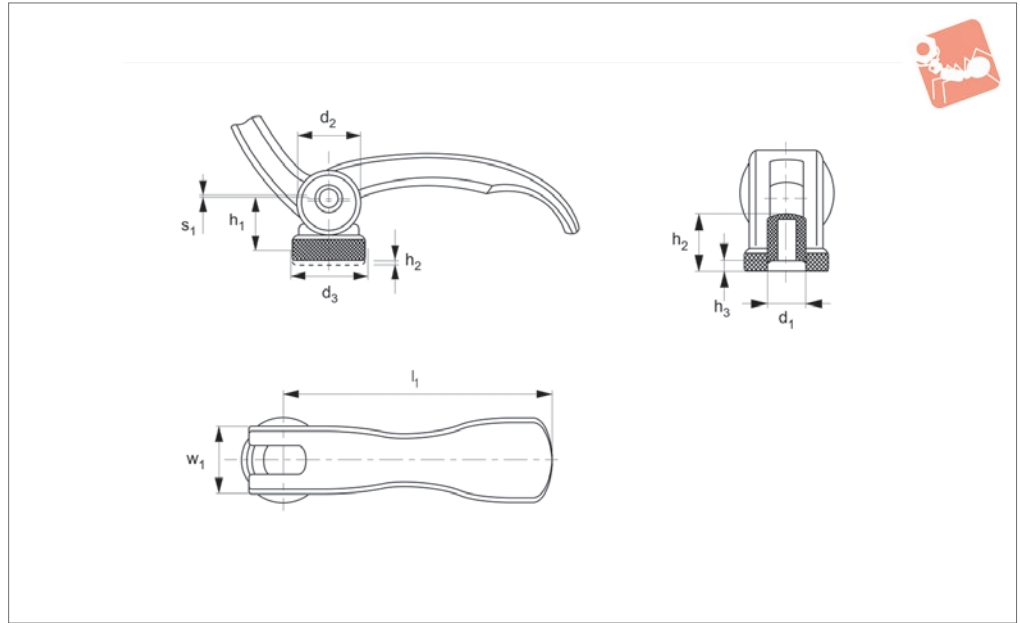
Enables quick and easy clamping of work-pieces.
Withstands temperatures of up to 80°C.

Order No.	Material	w ₁	l ₁	d ₁	h ₁ max.	d ₂	d ₃	h ₂	h ₃	Clamping stroke s ₁	Weight g
18580.W0003	Steel	16	63	M 5	16.4	16	18.5	13	3.0	0.75	60
18580.W0001	Steel	16	63	M 6	16.4	16	18.5	13	3.0	0.75	58
18580.W0002	Steel	20	82	M 8	19.5	20	22.5	15	3.7	1.00	116
18580.W0203	Stainless	16	63	M 5	16.4	16	18.5	13	3.0	0.75	60
18580.W0201	Stainless	16	63	M 6	16.4	16	18.5	13	3.0	0.75	58
18580.W0202	Stainless	20	82	M 8	19.5	20	22.5	15	3.7	1.00	116





18580.2



Material

Handle: zinc die-cast, black plastic coated.
Threaded part, inner parts, adjusting nut:
stainless steel (AISI 303, 1.4305).
Bearing washer: reinforced glass, thermo-

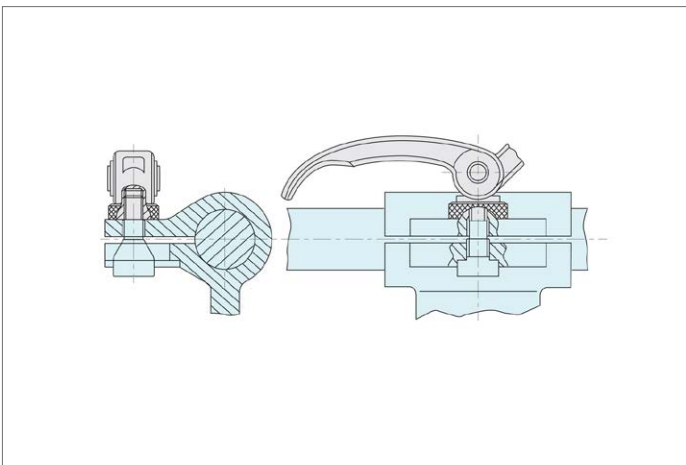
plastic.

Technical Notes

Enables quick and easy clamping of work-pieces.

Adjustable type enables repositioning of lever to avoid obstruction of the work-piece.
Withstands temperatures of up to 80° C.

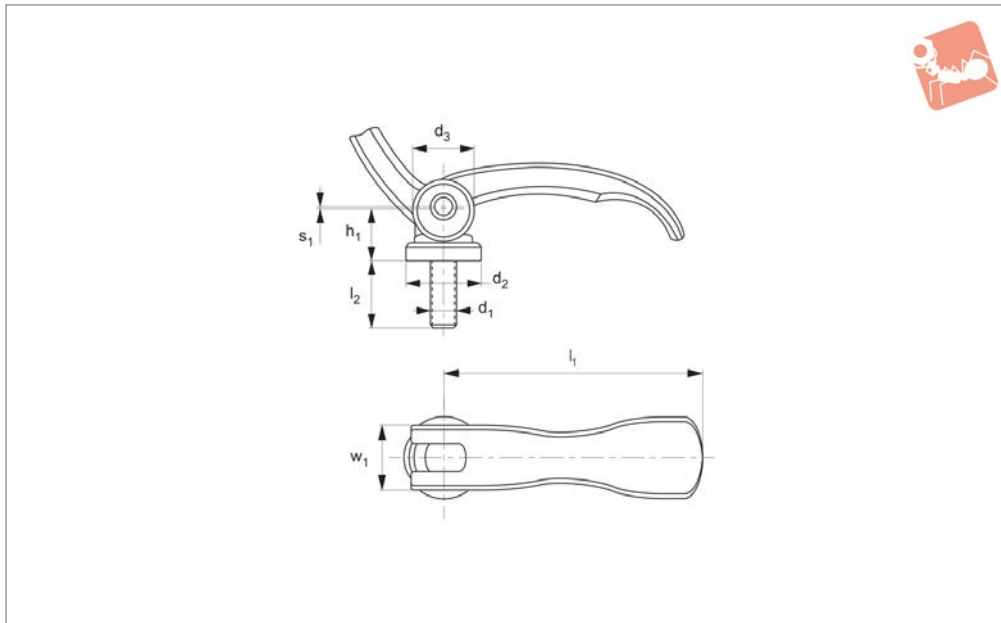
Order No.	Material	w ₁	l ₁	d ₁	h ₁ max.	d ₂	d ₃	Range of adj. h ₂	h ₃	h ₄ min.	Clamping stroke s ₁	Weight g
18580.W0302	Stainless	20	82	M 8	19.5	20	25	2.5	15	3.7	1.00	130
18580.W0303	Stainless	16	63	M 5	16.4	16	19	1.5	13	3.0	0.75	65
18580.W0301	Stainless	16	63	M 6	16.4	16	19	1.5	13	3.0	0.75	64
18580.W0102	Steel	20	82	M 8	19.5	20	25	2.5	15	3.7	1.00	130
18580.W0103	Steel	16	63	M 5	16.4	16	19	1.5	13	3.0	0.75	65
18580.W0101	Steel	16	63	M 6	16.4	16	19	1.5	13	3.0	0.75	64





Eccentric Levers - Male fixed

Standard Manual Clam-



18582.1

STANDARD MANUAL CLAMPING

Material

Handle: zinc die-cast, black plastic coated.
Grub screw, inner parts, adjusting nut: steel, galvanised, or stainless steel 1.4305.

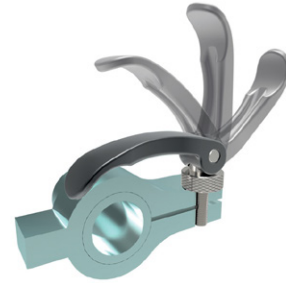
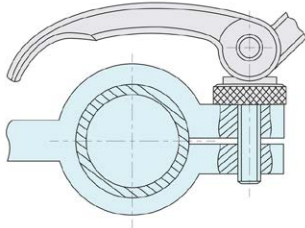
Bearing washer: Thermoplastic (POM), glass-reinforced.

pieces. Withstands temperatures of up to 80° C.

Technical Notes

Enables quick and easy clamping of work-

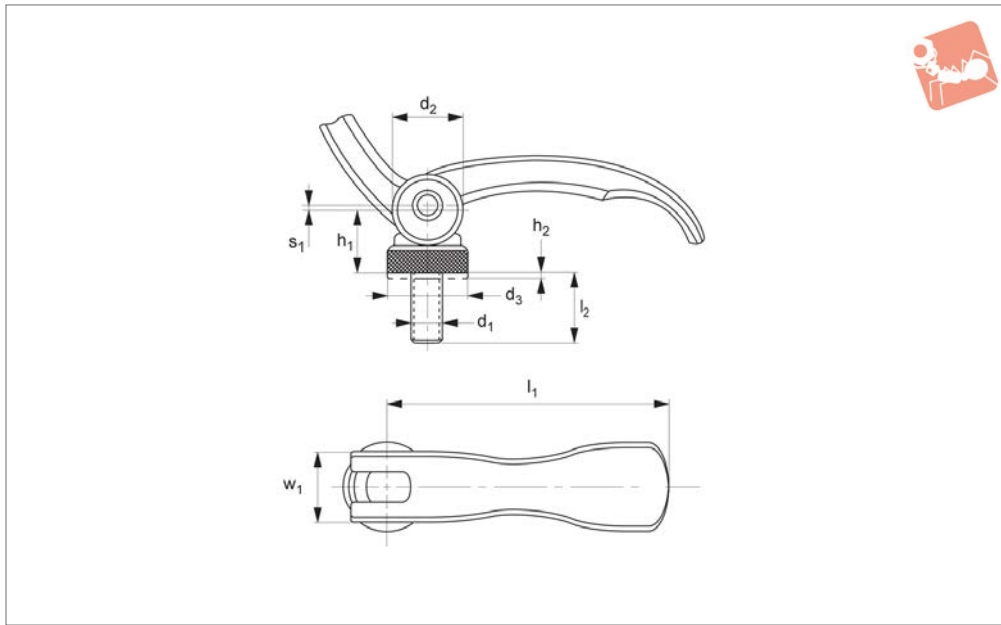
Order No.	Material	w ₁	l ₁	d ₁	h ₁ max.	d ₂	d ₃	l ₂ max.	Clamping stroke s ₁	Weight g
18582.W0009	Steel	16	63	M 6	16.4	16	18.5	16	0.75	63
18582.W0012	Steel	16	63	M 6	16.4	16	18.5	30	0.75	66
18582.W0014	Steel	16	63	M 6	16.4	16	18.5	40	0.75	68
18582.W0016	Steel	16	63	M 6	16.4	16	18.5	50	0.75	68
18582.W0019	Steel	20	82	M 8	19.5	20	22.5	20	1.00	129
18582.W0020	Steel	20	82	M 8	19.5	20	22.5	25	1.00	130
18582.W0022	Steel	20	82	M 8	19.5	20	22.5	35	1.00	133
18582.W0023	Steel	20	82	M 8	19.5	20	22.5	40	1.00	135
18582.W0030	Steel	16	63	M 5	16.4	16	18.5	16	0.75	62
18582.W0031	Steel	16	63	M 5	16.4	16	18.5	20	0.75	63
18582.W0032	Steel	16	63	M 5	16.4	16	18.5	25	0.75	64
18582.W0033	Steel	16	63	M 5	16.4	16	18.5	30	0.75	65
18582.W0034	Steel	16	63	M 5	16.4	16	18.5	35	0.75	65
18582.W0035	Steel	16	63	M 5	16.4	16	18.5	40	0.75	66
18582.W0036	Steel	16	63	M 5	16.4	16	18.5	50	0.75	67
18582.W0209	Stainless	16	63	M 6	16.4	16	18.5	16	0.75	63
18582.W0212	Stainless	16	63	M 6	16.4	16	18.5	30	0.75	66
18582.W0214	Stainless	16	63	M 6	16.4	16	18.5	40	0.75	68
18582.W0216	Stainless	16	63	M 6	16.4	16	18.5	50	0.75	68
18582.W0219	Stainless	20	82	M 8	19.5	20	22.5	20	1.00	129
18582.W0220	Stainless	20	82	M 8	19.5	20	22.5	25	1.00	130
18582.W0222	Stainless	20	82	M 8	19.5	20	22.5	35	1.00	133
18582.W0223	Stainless	20	82	M 8	19.5	20	22.5	40	1.00	135
18582.W0230	Stainless	16	63	M 5	16.4	16	18.5	16	0.75	62
18582.W0231	Stainless	16	63	M 5	16.4	16	18.5	20	0.75	63
18582.W0232	Stainless	16	63	M 5	16.4	16	18.5	25	0.75	64
18582.W0233	Stainless	16	63	M 5	16.4	16	18.5	30	0.75	65
18582.W0234	Stainless	16	63	M 5	16.4	16	18.5	35	0.75	65
18582.W0235	Stainless	16	63	M 5	16.4	16	18.5	40	0.75	66
18582.W0236	Stainless	16	63	M 5	16.4	16	18.5	50	0.75	67





Eccentric Levers - Male adjustable

Standard Manual Clam-



18582.2

STANDARD MANUAL CLAMPING

Material

Handle: zinc die-cast, black plastic coated.
Grub screw, inner parts, adjusting nut: steel, zinc plated or stainless steel (AISI 303, 1.4305).

Bearing washer: Thermoplastic (POM), glass-reinforced.

Technical Notes

Enables quick and easy clamping of work-

pieces. Adjustable type enables re-positioning of lever to avoid obstruction of the workpiece.

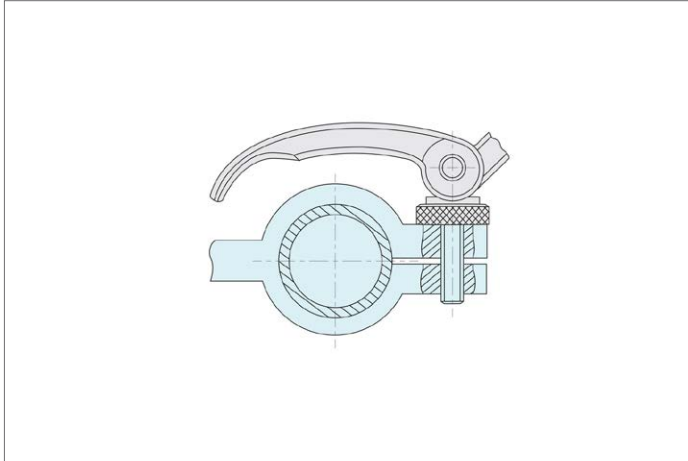
Withstands temperatures of up to 80° C.

Order No.	Material	w ₁	l ₁	d ₁	h ₁ max.	d ₂	d ₃	h ₂ range of adj.	l ₂ max.	Type	Clamping stroke s ₁	Weight g
18582.W0130	Steel	16	63	M 5	16.4	16	19	1.5	16	Adjustable	0.75	68
18582.W0131	Steel	16	63	M 5	16.4	16	19	1.5	20	Adjustable	0.75	69
18582.W0132	Steel	16	63	M 5	16.4	16	19	1.5	25	Adjustable	0.75	70
18582.W0133	Steel	16	63	M 5	16.4	16	19	1.5	30	Adjustable	0.75	71
18582.W0134	Steel	16	63	M 5	16.4	16	19	1.5	35	Adjustable	0.75	71
18582.W0135	Steel	16	63	M 5	16.4	16	19	1.5	40	Adjustable	0.75	72
18582.W0136	Steel	16	63	M 5	16.4	16	19	1.5	50	Adjustable	0.75	73
18582.W0109	Steel	16	63	M 6	16.4	16	19	1.5	16	Adjustable	0.75	69
18582.W0110	Steel	16	63	M 6	16.4	16	19	1.5	20	Adjustable	0.75	69
18582.W0111	Steel	16	63	M 6	16.4	16	19	1.5	25	Adjustable	0.75	71
18582.W0112	Steel	16	63	M 6	16.4	16	19	1.5	30	Adjustable	0.75	72
18582.W0113	Steel	16	63	M 6	16.4	16	19	1.5	35	Adjustable	0.75	73
18582.W0114	Steel	16	63	M 6	16.4	16	19	1.5	40	Adjustable	0.75	74
18582.W0116	Steel	16	63	M 6	16.4	16	19	1.5	50	Adjustable	0.75	76
18582.W0120	Steel	20	82	M 8	19.5	20	25	2.5	25	Adjustable	1.00	142
18582.W0121	Steel	20	82	M 8	19.5	20	25	2.5	30	Adjustable	1.00	144
18582.W0122	Steel	20	82	M 8	19.5	20	25	2.5	35	Adjustable	1.00	146
18582.W0125	Steel	20	82	M 8	19.5	20	25	2.5	50	Adjustable	1.00	152
18582.W0127	Steel	20	82	M 8	19.5	20	25	2.5	60	Adjustable	1.00	156
18582.W0330	Stainless	16	63	M 5	16.4	16	19	1.5	16	Adjustable	0.75	68
18582.W0331	Stainless	16	63	M 5	16.4	16	19	1.5	20	Adjustable	0.75	69
18582.W0332	Stainless	16	63	M 5	16.4	16	19	1.5	25	Adjustable	0.75	70
18582.W0333	Stainless	16	63	M 5	16.4	16	19	1.5	30	Adjustable	0.75	71
18582.W0334	Stainless	16	63	M 5	16.4	16	19	1.5	35	Adjustable	0.75	71
18582.W0335	Stainless	16	63	M 5	16.4	16	19	1.5	40	Adjustable	0.75	72
18582.W0336	Stainless	16	63	M 5	16.4	16	19	1.5	50	Adjustable	0.75	73
18582.W0309	Stainless	16	63	M 6	16.4	16	19	1.5	16	Adjustable	0.75	69
18582.W0310	Stainless	16	63	M 6	16.4	16	19	1.5	20	Adjustable	0.75	69
18582.W0311	Stainless	16	63	M 6	16.4	16	19	1.5	25	Adjustable	0.75	71
18582.W0312	Stainless	16	63	M 6	16.4	16	19	1.5	30	Adjustable	0.75	72
18582.W0313	Stainless	16	63	M 6	16.4	16	19	1.5	35	Adjustable	0.75	73
18582.W0314	Stainless	16	63	M 6	16.4	16	19	1.5	40	Adjustable	0.75	74
18582.W0316	Stainless	16	63	M 6	16.4	16	19	1.5	50	Adjustable	0.75	76



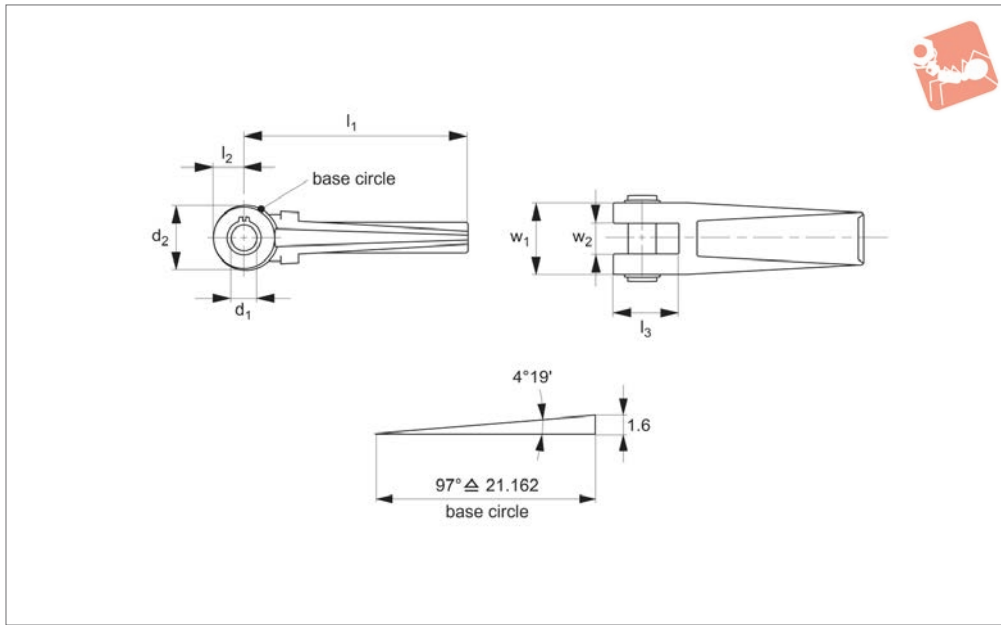
Order No.	Material	w ₁	l ₁	d ₁	h ₁ max.	d ₂	d ₃	h ₂ range of adj.	l ₂ max.	Type	Clamping stroke s ₁	Weight g
18582.W0320	Stainless	20	82	M 8	19.5	20	25	2.5	25	Adjustable	1.00	142
18582.W0321	Stainless	20	82	M 8	19.5	20	25	2.5	30	Adjustable	1.00	144
18582.W0322	Stainless	20	82	M 8	19.5	20	25	2.5	35	Adjustable	1.00	146
18582.W0325	Stainless	20	82	M 8	19.5	20	25	2.5	50	Adjustable	1.00	152
18582.W0327	Stainless	20	82	M 8	19.5	20	25	2.5	60	Adjustable	1.00	156

STANDARD MANUAL CLAMPING





Eccentric Levers - Double Surface with fulcrum pin 18640



18600

STANDARD MANUAL CLAMPING

Material

Lever: steel, alloyed, case-hardened and blackened.
Fulcrum pin: steel, case-hardened and

ground. Complete with circlips.

Technical Notes

Eccentric clamping cams on both sides.

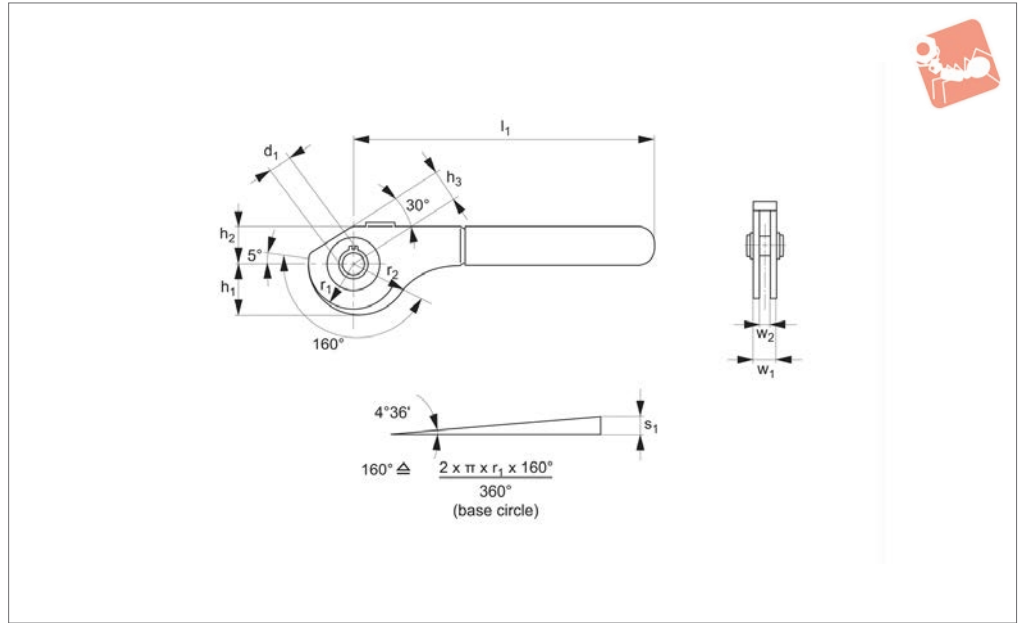
Tips

Can be used with swing bolts.

Order No.	w ₁	w ₂	l ₁	d ₁	d ₂	l ₂	l ₃	Weight g
18600.W0012	32	14.1	100	12	28	12.5	28.5	334



18620



Material

Eccentric: steel (ST52-3, 1.0570), zinc phosphated or stainless steel, (AISI 304, 1.4301).

Circlip: stainless steel (AISI 301, 1.4310).

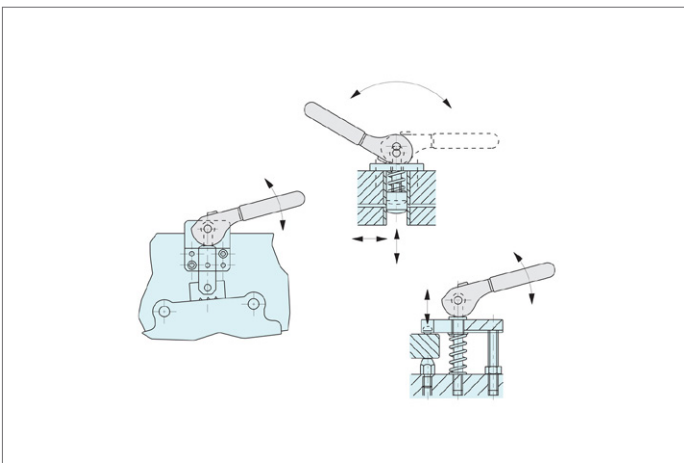
Fulcrum pin: stainless steel (AISI 420, 1.4021), heat-treated.

Grip: red PVC, max. temperature 60°C.

Technical Notes

Supplied with fulcrum pin no. 18640.

Order No.	w ₁	w ₂	l ₁	d ₁ tol. f8	h ₁	h ₂	h ₃	r ₁	r ₂	Eccentric stroke s ₁	Total stroke r ₂ - h ₃	Type	Weight g
18620.W0408	13	9	114	8	19.54	14	12	17.2	21.07	3.87	9.07	Steel	93
18620.W0410	17	12	138	10	24.54	17	15	21.6	26.45	4.85	11.45	Steel	178
18620.W0412	20	14	157	12	31.81	21	18	28.0	34.29	6.29	16.29	Steel	290
18620.W0508	13	9	114	8	19.54	14	12	17.2	21.07	3.87	9.07	Stainless Steel	94
18620.W0510	17	12	138	10	24.54	17	15	21.6	26.45	4.85	11.45	Stainless Steel	175
18620.W0512	20	14	157	12	31.81	21	18	28.0	34.29	6.29	16.29	Stainless Steel	288

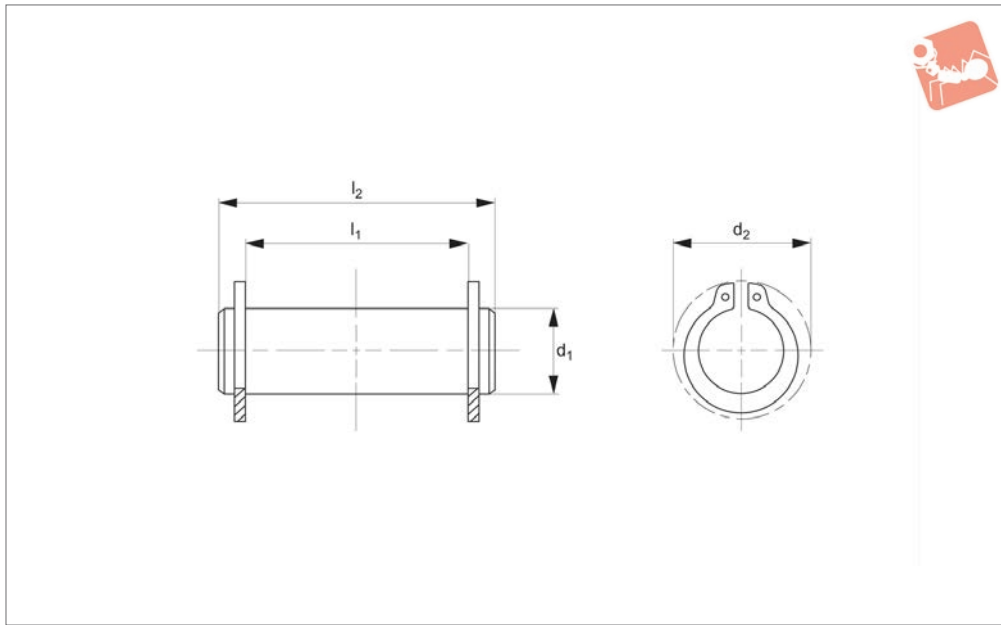




Fulcrum Pins - Stainless Steel

for eccentric levers 18620

Standard Manual Clam-



18640

STANDARD MANUAL CLAMPING

Material

Pin: stainless steel (AISI 420, 1.4021), heat treated.

Circlip: stainless steel (AISI 301, 1.4310) -

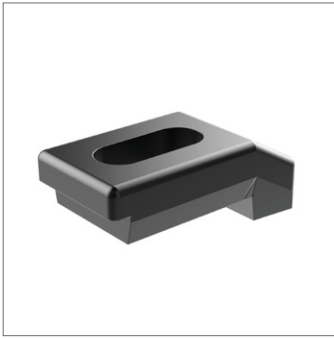
supplied.

Technical Notes

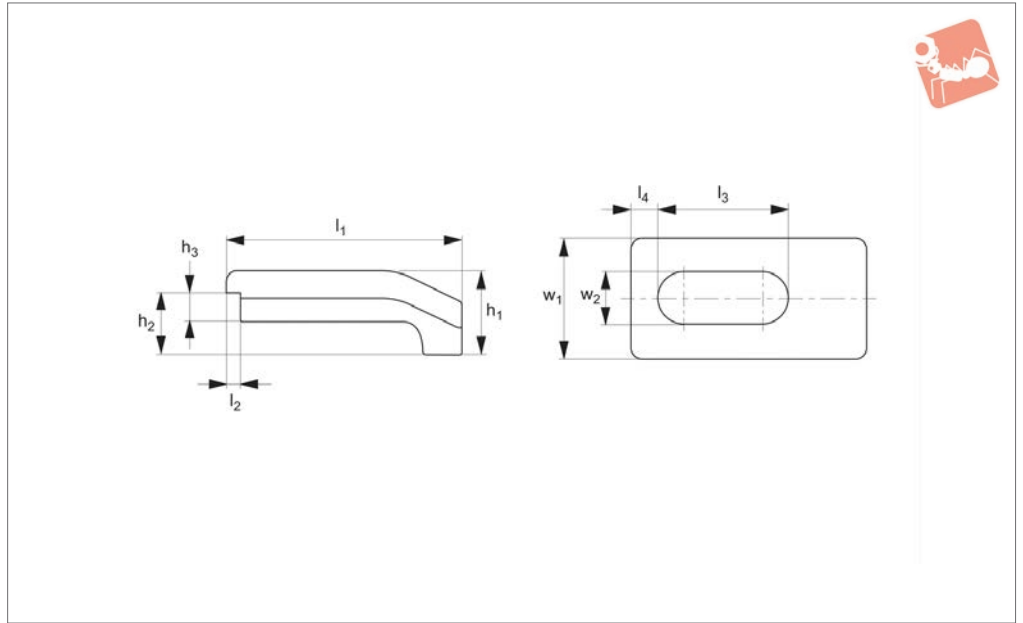
Suitable for eccentric levers no.18620 and

similar applications.

Order No.	l_1 -0.5	d_1 tol. f8	d_2	l_2	Weight g
18640.W0082	14	8	14.7	18	7.7
18640.W0085	21	8	14.7	27	10.0
18640.W0102	18	10	17.0	24	14.0
18640.W0105	29	10	17.0	35	21.0
18640.W0122	21	12	19.0	27	23.0
18640.W0125	31	12	19.0	37	34.0



10290



Material

Steel, heat-treated and blackened.

Technical Notes

Supplied in pairs.

Tips

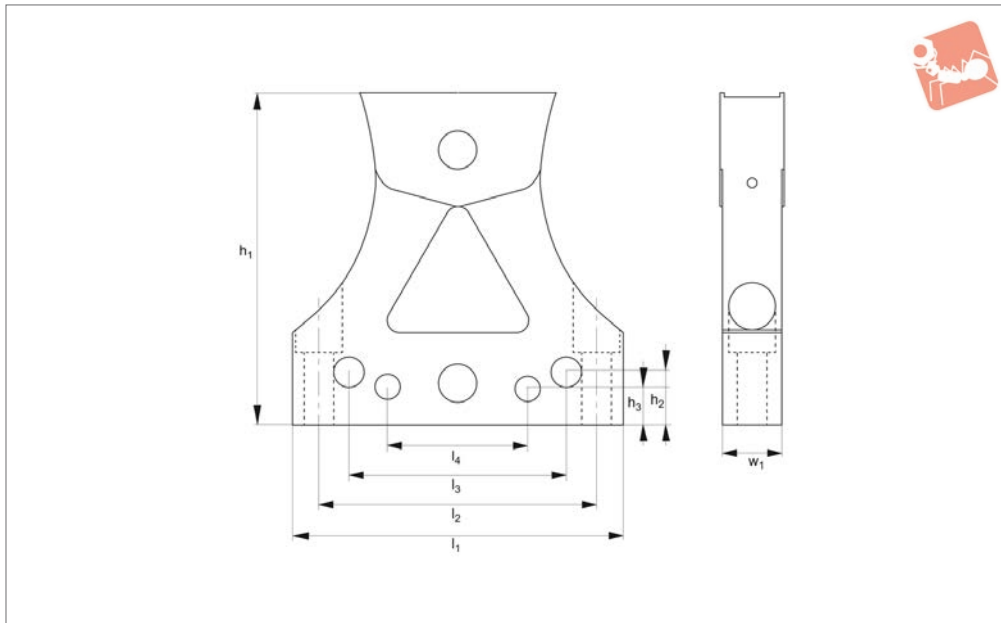
Used with:
21000 T-slot bolt, 21120 T-stud, 24400 collar nut, 25000 plain washer.

Order No.	For bolt	For vice jaw width	h_1	h_2	$h_3 \times l_2$	l_1	l_3	l_4	w_1	w_2	Weight g
10290.W0015	M12- M16	100	22.5	15	10x6,5	78	40	10.5	40	16.5	660
10290.W0020	M12- M16	125/160	27.5	20	10x6,5	78	40	10.5	40	16.5	705



Vice Tower Set for 5 side machining on vices

Standard Manual Clam-



12464

STANDARD MANUAL CLAMPING

Technical Notes

Vice towers mount directly to your 4" or 6" vice to elevate your workpiece into the 5-axis envelope and allow machining on 5 sides of the workpiece. Incorporating talon, versagrip and pitbull clamps the system is exceptionally versatile in securing round or square stock material. As well as being suited for mounting to

your vice, the vice towers can also be mounted to your T-slot table.

Tips

Low profile clamping reduces material costs and eliminates the need for time-consuming workpiece preparation.

Important Notes

Full set contents:

- 2 x vice towers
- 4 x talon grips 12034.W0075
- 4 x versagrips 12036.W0175
- 1 x talon stop 12035.W0220
- 2 x pitbull clamp 12031.W0060
- 2 x each support bolts M12x65/100/200
- 4 x mounting bolts M12x55
- 4 x T-nuts M12x16

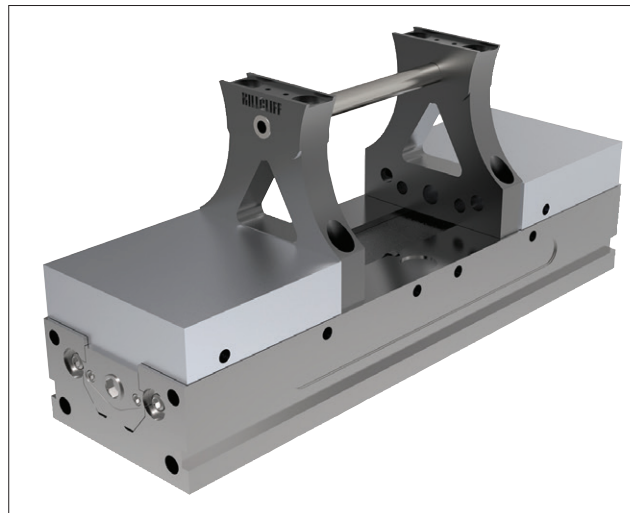
Order No.	Type	Suitable vice size	Mounting bolts	h_1	h_2	h_3	l_1	l_2	l_3	l_4	w_1
12464.W0066	Set	4" or 6"	M12x55	150	23.9	17.5	150	126.0	98.6	63.5	26.9





Vice Application

- Mount jaws to either 4 or 6 inch vice with logo facing outwards, keeping the mounting bolts loose.
- Determine which grippers will be used, install and hand-tighten the grippers. If VersaGrips are being used to grip round stock, place in outboard bores. Do not tighten screws at this point. Tighten vice lightly onto workpiece allowing jaws to centre themselves, adjust VersaGrips, and tighten gripper screws and mounting bolts for both jaws.
- Loosen vice jaw for load/unload clearance of workpiece. Install support/pivot bolt.
- Setup is complete. Tighten support bolt allowing grippers to penetrate 0.25-1.52mm on material < 40 HRC.
- For additional holding force, loosen vice handle which will eliminate any jaw lift that may have occurred and depending on amount of torque can increase pressure to over 4000 kg.



T-slot and Grid Table Application

- Using vertical counterbores on outboard edges of jaws, install mounting bolts into t-nuts or grid plate and adjust accordingly. Do not tighten at this time.
- Select appropriate support bolts and install in upper horizontal counterbore and thread into opposite tower.
- Place workpiece between jaws and lightly tighten upper support bolt until all grippers contact workpiece. Tighten vertical mounting bolts.
- Loosen upper support bolt one full turn or until adequate workpiece clearance is obtained.
- Upper support bolt is now the “drive bolt” for securing and releasing workpiece.
- Any size T-nuts can be utilised. We provide 16mm T-nuts.



Clamping Sets with low height clamps 12200

Standard Manual Clam-



19100

STANDARD MANUAL CLAMPING

Material

Clamp sets are designed for use on T-slot machines, and contain all the necessary

parts to quickly clamp tools, fixtures or workpieces. All parts are interchangeable and are made of heat treated steel to DIN

standard (class 8 or class 10). The clamping set comes in a wooden box which has a removable lid.

Order No.	Thread & Slot size	Box l x w x h	Step blocks 14000	T-Bolts 21000	Step clamps 10020	Studs 21100	Weight kg
19100.W0010	M10 x 10	355x270x47	.W0001 x 4pcs .W0002 x 4pcs .W0003 x 2pcs	40mm .W0101 x 2pcs 63mm .W0102 x 4pcs 100mm .W0103 x 4pcs	.W0010 x 4pcs	80mm .W0102 x 4pcs	9.2
19100.W0012	M12 x 12	460x330x50	.W0002 x 4pcs .W0003 x 4pcs	50mm .W0121 x 2pcs 80mm .W0123 x 4pcs 125mm .W0124 x 4pcs	.W0014 x 4pcs	100mm .W0124 x 4pcs	14.3
19100.W0014	M12 x 14	460x330x50	.W0002 x 4pcs .W0003 x 4pcs	50mm .W0141 x 2pcs 80mm .W0143 x 4pcs 125mm .W0144 x 4pcs	.W0014 x 4pcs	100mm .W0124 x 4pcs	14.6
19100.W0015	M14 x 16	510x415x50	.W0002 x 4pcs .W0003 x 4pcs	63mm .W0161 x 2pcs 100mm .W0162 x 4pcs 160mm .W0163 x 4pcs	.W0018 x 4pcs	125mm .W0147 x 4pcs	18.5
19100.W0016	M16 x 16	510x415x50	.W0002 x 4pcs .W0003 x 4pcs	63mm .W0165 x 2pcs 100mm .W0167 x 4pcs 160mm .W0168 x 4pcs	.W0018 x 4pcs	125mm .W0164 x 4pcs	21.5
19100.W0018	M16 x 18	510x415x50	.W0002 x 4pcs .W0003 x 4pcs	63mm .W0181 x 2pcs 100mm .W0183 x 4pcs 160mm .W0184 x 4pcs	.W0018 x 4pcs	125mm .W0164 x 4pcs	21500

Order No.	Fixture nuts 24300	Extension nuts 24600	Dished washers 25700	Low height clamp 12200	T-Slot scrapper 26300	Spanner	Thread paste
19100.W0010	.W0110 x 6pcs	.W0110 x 4pcs	.W0110 x 6pcs	.W0012 x 4pcs	-	16 x 1pc	1pc



Order No.	Fixture nuts 24300	Extension nuts 24600	Dished washers 25700	Low height clamp 12200	T-Slot scrapper 26300	Spanner	Thread paste
19100.W0012	.W0112 x 6pcs	.W0112 x 4pcs	.W0112 x 6pcs	.W0012 x 4pcs	-	18 x 1pc	1pc
19100.W0014	.W0112 x 6pcs	.W0112 x 4pcs	.W0112 x 6pcs	.W0014 x 4pcs	.W0120 x 1pc	18 x 1pc	1pc
19100.W0015	.W0114 x 6pcs	.W0114 x 4pcs	.W0114 x 6pcs	.W0016 x 1pc	.W0120 x 1pc	22 x 1pc	1pc
19100.W0016	.W0116 x 6pcs	.W0116 x 4pcs	.W0116 x 6pcs	.W0016 x 1pc	.W0120 x 1pc	24 x 1pc	1pc
19100.W0018	.W0116 x 6pcs	.W0116 x 4pcs	.W0116 x 6pcs	.W0018 x 1pc	.W0120 x 1pc	24 x 1pc	1pc



Clamping Sets with stop clamps 10020

Standard Manual Clam-



19200

STANDARD MANUAL CLAMPING

Technical Notes

High quality clamping set for machines. Comprising step clamps no. 10200 and

step blocks no. 14000. High quality T-bolts and studs (class 8 or class 10). With spring clamp supports.

Order No.	Thread & Slot size	Box l x w x h	Step blocks 14000	T-Bolts 21000	Step clamps 10020	Studs 21100	Weight kg
19200.W0010	M10 x 10	355x225x47	.W0001 x 4pcs .W0002 x 4pcs .W0003 x 2pcs	63mm .W0102 x 4pcs 100mm .W0103 x 4pcs	.W0011 x 4pcs	80mm .W0083 x 4pcs	6.5
19200.W0012	M12 x 12	359x333x52	.W0002 x 4pcs .W0003 x 4pcs	80mm .W0123 x 4pcs 125mm .W0124 x 4pcs	.W0014 x 4pcs	100mm .W0124 x 4pcs	11.0
19200.W0014	M12 x 14	359x333x52	.W0002 x 4pcs .W0003 x 4pcs	80mm .W0123 x 4pcs 125mm .W0124 x 4pcs	.W0014 x 4pcs	100mm .W0124 x 4pcs	11.1
19200.W0016	M16 x 16	390x415x55	.W0002 x 4pcs .W0003 x 4pcs	100mm .W0167 x 4pcs 160mm .W0168 x 4pcs	.W0018 x 4pcs	125mm .W0164 x 4pcs	16.5
19200.W0018	M16 x 18	390x415x55	.W0002 x 4pcs .W0003 x 4pcs	100mm .W0183 x 4pcs 160mm .W0184 x 4pcs	.W0018 x 4pcs	125mm .W0164 x 4pcs	16.5
19200.W0020	M20 x 20	480x528x60	.W0002 x 4pcs .W0003 x 4pcs	125mm .W0203 x 4pcs 200mm .W0205 x 4pcs	.W0022 x 4pcs	125mm .W0202 x 4pcs	24.5
19200.W0022	M20 x 22	480x528x60	.W0002 x 4pcs .W0003 x 4pcs	125mm .W0223 x 4pcs 200mm .W0225 x 4pcs	.W0022 x 4pcs	125mm .W0202 x 4pcs	24.5
19200.W0024	M20 x 24	480x528x60	.W0002 x 4pcs .W0003 x 4pcs	-	.W0022 x 4pcs	125mm .W0202 x 8pcs 200mm .W0204 x 4pcs	24.8



Order No.	T-nuts 24000	Fixture nuts 24300	Extension nuts 24600	Dished washers 25700	T-Slot scrapper 26300	Clamp Support 26000	Spanner	Thread paste
19200.W0010	-	.W0110 x 6pcs	.W0110 x 4pcs	.W0110 x 6pcs	-	.W0101 x 4pcs	16 x 1pc	1pc
19200.W0012	-	.W0112 x 4pcs	.W0112 x 4pcs	.W0112 x 6pcs	-	.W0102 x 4pcs	18 x 1pc	1pc
19200.W0014	-	.W0112 x 4pcs	.W0112 x 4pcs	.W0112 x 6pcs	.W0120 x 1pc	.W0102 x 4pcs	18 x 1pc	1pc
19200.W0016	-	.W0116 x 4pcs	.W0116 x 4pcs	.W0116 x 6pcs	.W0120 x 1pc	.W0103 x 4pcs	24 x 1pc	1pc
19200.W0018	-	.W0116 x 4pcs	.W0116 x 4pcs	.W0116 x 6pcs	.W0120 x 1pc	.W0103 x 4pcs	24 x 1pc	1pc
19200.W0020	-	.W0120 x 6pcs	.W0120 x 4pcs	.W0120 x 6pcs	.W0120 x 1pc	.W0104 x 4pcs	30 x 1pc	1pc
19200.W0022	-	.W0120 x 6pcs	.W0120 x 4pcs	.W0120 x 6pcs	.W0132 x 1pc	.W0104 x 4pcs	30 x 1pc	1pc
19200.W0024	.W0242 x 8pcs	.W0120 x 6pcs	.W0120 x 4pcs	.W0120 x 6pcs	.W0132 x 1pc	.W0104 x 4pcs	30 x 1pc	1pc



19240

STANDARD MANUAL CLAMPING

Material

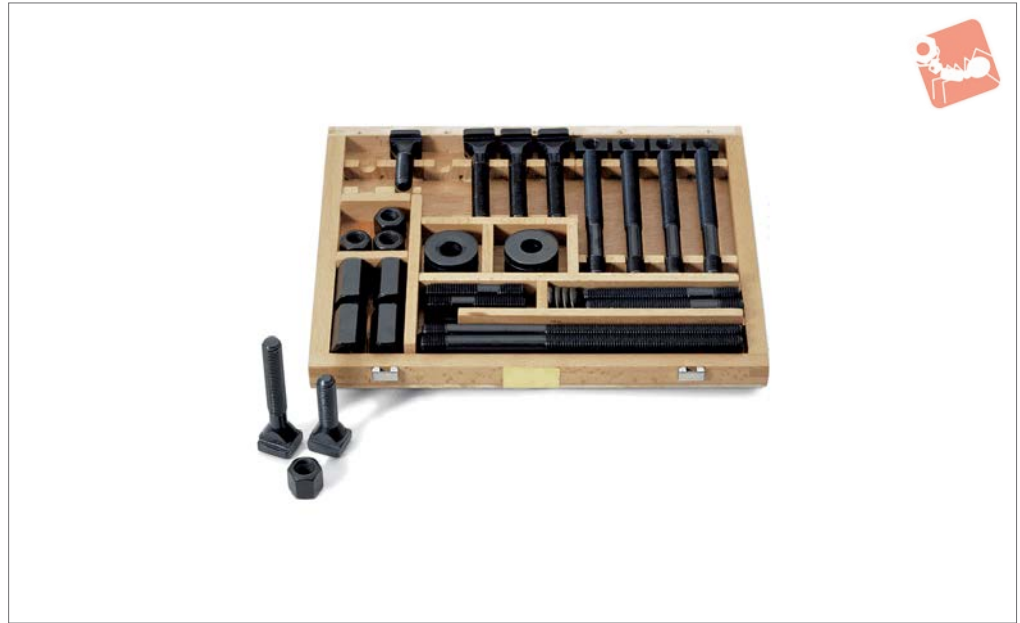
All parts are produced from tempered steel according to DIN or factory standards,

screw parts to strength class 8 or 10. Ideal for tool making, manufacturing and training facilities.

Order No.	Thread & Slot size	Step blocks 14000	T-Bolts 21000	Step clamps 10020	Weight kg
19240.W0014	M12 x 14	.W0002 x 4pcs .W0003 x 4pcs	50mm .W0141 x 2pcs 80mm .W0143 x 4pcs 125mm .W0144 x 4pcs	.W0014 x 2pcs .W0015 x 2pcs	10.0
19240.W0016	M14 x 16	.W0002 x 4pcs .W0003 x 4pcs	63mm .W0161 x 2pcs 100mm .W0162 x 4pcs 160mm .W0163 x 4pcs	.W0014 x 2pcs .W0015 x 2pcs	11.1
19240.W0018	M16 x 18	.W0002 x 4pcs .W0003 x 4pcs	63mm .W0181 x 2pcs 80mm .W0182 x 4pcs 160mm .W0184 x 4pcs	.W0018 x 2pcs .W0019 x 2pcs	15.2
Order No.	Studs 21100	Fixture nuts 24300	Extension nuts 24600	Dished washers 25700	
19240.W0014	100mm .W0124 x 2pcs	.W0112 x 6pcs	.W0112 x 2pcs	.W0112 x 6pcs	
19240.W0016	100mm .W0142 x 2pcs 160mm .W0143 x 2pcs	.W0114 x 6pcs	.W0114 x 2pcs	.W0114 x 6pcs	
19240.W0018	125mm .W0164 x 4pcs 200mm .W0166 x 2pcs	.W0116 x 6pcs	.W0116 x 4pcs	.W0116 x 6pcs	



29000



Technical Notes

Set no 29000.W0020 contains extra studs no. 21100 (2 x 80 mm, 4 x 125 mm) in

place of T-bolts no. 21000.

Order No.	Thread & Slot size	Box l x w x h	T-Bolts 21000	Studs 21100	Weight g
29000.W0010	M10x10	254x188x32	40mm .W0101 x 2pcs 63mm .W0102 x 4pcs 100mm.W0103 x 4pcs	50mm .W0101 x 4pcs 80mm .W0102 x 4pcs 200mm .W0106 x 4pcs	2000
29000.W0012	M12x12	276x234x36	50mm .W0101 x 4pcs 80mm .W0102 x 4pcs 200mm .W0106 x 4pcs	63mm .W0122 x 4pcs 100mm .W0124 x 4pcs 200mm .W0127 x 4pcs	3200
29000.W0014	M12x14	278x234x36	50mm .W0141 x 2pcs 80mm .W0143 x 4pcs	63mm .W0122 x 4pcs 100mm .W0124 x 4pcs 125mm .W0125 x 4pcs 200mm .W0127 x 4pcs	3500
29000.W0016	M14x16	317x239x44	63mm .W0161 x 2pcs 100mm .W0162 x 4pcs	63mm .W0141 x 4pcs 100mm .W0142 x 4pcs 160mm .W0143 x 4pcs 250mm .W0145 x 4pcs	5400
29000.W0017	M16x16	339x294x48	63mm .W0165 x 2pcs 100mm .W0167 x 4pcs 160mm .W0168 x 4pcs	80mm .W0162 x 4pcs 125mm .W0164 x 4pcs 250mm .W0167 x 4pcs	7400
29000.W0018	M16x18	339x294x48	63mm .W0181 x 2pcs 100mm .W0183 x 4pcs	80mm .W0162 x 4pcs 125mm .W0164 x 4pcs 160mm .W0165 x 4pcs 250mm .W0167 x 4pcs	7400
29000.W0020	M18x20	358x342x56	-	80mm .W0181 x 6pcs 125mm .W0182 x 8pcs 200mm .W0184 x 4pcs 315mm .W0186 x 4pcs	11000
29000.W0022	M20x22	358x342x56	80mm .W0201 x 2pcs 125mm .W0203 x 4pcs	80mm .W0201 x 4pcs 125mm .W0202 x 4pcs 200mm .W0204 x 4pcs 315mm .W0206 x 4pcs	13500
29000.W0028	M24x28	444x409x72	100mm .W0281 x 2pcs 160mm .W0283 x 4pcs	100mm .W0241 x 4pcs 160mm .W0243 x 4pcs 250mm .W0245 x 4pcs 400mm .W0247 x 4pcs	23600



T-Bolt Set in wooden box



Standard Manual Clam-

Order No.	T-nuts 24000	Fixture nuts 24330	Extension nuts 24600	Dished washers 25700	Spherical washer 25100	Plain washer 25000
29000.W0010	-	.W0110 x 4pcs	.W0110 x 4pcs	.W0110 x 4pcs	.W0110 x 4pcs	.W0110 x 4pcs
29000.W0012	-	.W0112 x 4pcs	.W0112 x 4pcs	.W0112 x 4pcs	.W0112 x 4pcs	.W0112 x 4pcs
29000.W0014	.W0143 x 4pcs	.W0112 x 4pcs	.W0112 x 4pcs	.W0112 x 4pcs	.W0112 x 4pcs	.W0112 x 4pcs
29000.W0016	.W0164 x 4pcs	.W0114 x 4pcs	.W0114 x 4pcs	.W0114 x 4pcs	.W0114 x 4pcs	.W0114 x 4pcs
29000.W0017	-	.W0116 x 4pcs	.W0116 x 4pcs	.W0116 x 4pcs	.W0116 x 4pcs	.W0116 x 4pcs
29000.W0018	.W0185 x 4pcs	.W0116 x 4pcs	.W0116 x 4pcs	.W0116 x 4pcs	.W0116 x 4pcs	.W0116 x 4pcs
29000.W0020	.W0202 x 10pcs	.W0118 x 4pcs	.W0118 x 4pcs	-	-	.W0118 x 10pcs
29000.W0022	.W0223 x 4pcs	.W0120 x 4pcs	.W0120 x 4pcs	.W0120 x 4pcs	.W0120 x 4pcs	.W0120 x 4pcs
29000.W0028	.W0284 x 4pcs	.W0124 x 4pcs	.W0124 x 4pcs	.W0124 x 4pcs	.W0124 x 4pcs	.W0124 x 4pcs

STANDARD MANUAL CLAMPING