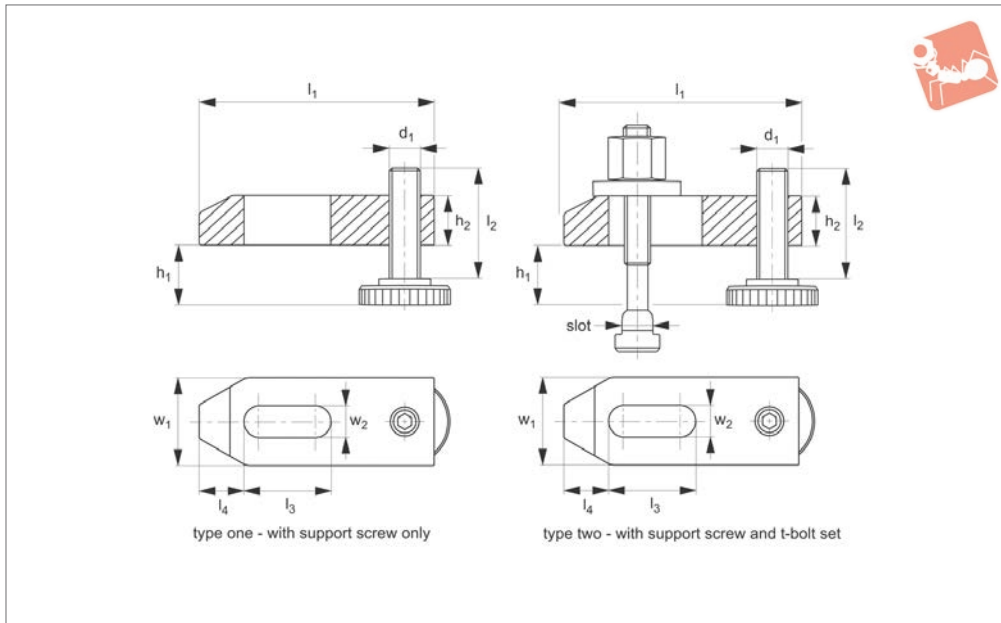




Adjustable Plain Clamps with height adjusting screw

Standard
Manual Clam-



10400

STANDARD MANUAL CLAMPING

Material

Heat-treated steel, enamelled.

Technical Notes

Type One - clamp and support screw only.

Type Two - clamp, support screw and t-bolt set.

h* - dependent on depth of slot and posi-

tion of fixture nut.

Tips

Often used for clamping press tools.

Used with:

10680 Ratchet clamp lever.

21000 T-Slot bolt.

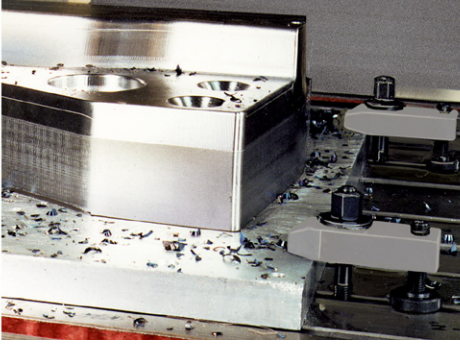
24400 Collar Nut.

25000 Plain washer.

Replacement Parts:

Replacement support screw see part no. 10410.

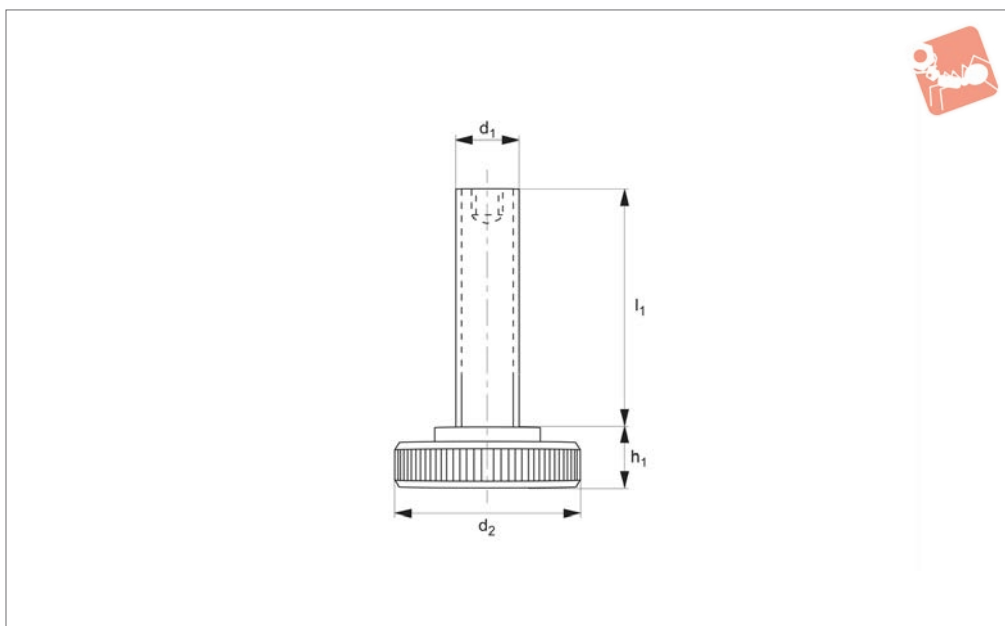
Order No.	Type	For bolt	Supplied T-bolt	T-slot size	d ₁ x l ₂	h ₁	h ₂	l ₃	l ₄	w ₁	w ₂ x l ₁	Weight g
10400.W0010	One	M10	-	-	M10x39	8-37	15	30	15	30	11x80	200
10400.W0012	One	M12, M14	-	-	M12x49	10-47	20	40	21	40	14x100	560
10400.W0014	One	M12, M14	-	-	M12x94	10-92	20	40	21	40	14x100	635
10400.W0016	One	M16, M18	-	-	M16x55	13-52	25	45	26	50	18x125	1110
10400.W0018	One	M16, M18	-	-	M16x90	13-87	25	45	26	50	18x125	1230
10400.W0020	One	M20, M22	-	-	M20x69	16-65	30	60	30	60	22x160	2050
10400.W0022	One	M20, M22	-	-	M20x109	16-105	30	60	30	60	22x160	2230
10400.W0024	One	M24	-	-	M24x87	20-83	30	80	35	70	26x200	3200
10400.W0026	One	M24	-	-	M24x137	20-133	30	80	35	70	26x200	3470
10400.W0028	One	M24	-	-	M24x87	20-80	35	105	35	70	26x250	4340
10400.W0030	One	M24	-	-	M24x137	20-130	35	105	35	70	26x250	4520
10400.W0032	One	M30	-	-	M30x180	24-150	50	130	45	80	33x315	11215
10400.W0034	One	M36, M42	-	-	M30x180	24-150	80	170	80	100	43x400	24350
10400.W0110	Two	M10	M10x10x80	10	M10x39	08-32	15	30	15	30	11x80	340
10400.W0112	Two	M12, M14	M12x12x100	12	M12x49	10-40	20	40	21	40	14x100	700
10400.W0114	Two	M12, M14	M12x14x100	14	M12x49	10-38	20	40	21	40	14x100	720
10400.W0115	Two	M12, M14	M12x14x160	14	M12x94	23-92	20	40	21	40	14x100	845
10400.W0116	Two	M16, M18	M16x16x125	16	M16x55	13-48	25	45	26	50	18x125	1400
10400.W0117	Two	M16, M18	M16x16x160	16	M16x90	15-83	25	45	26	50	18x125	1610
10400.W0118	Two	M16, M18	M16x18x125	18	M16x55	13-46	25	45	26	50	18x125	1400
10400.W0119	Two	M16, M18	M16x18x160	18	M16x90	13-81	25	45	26	50	18x125	1630
10400.W0120	Two	M20, M22	M20x20x160	20	M20x69	16-65	30	60	30	60	22x160	2600
10400.W0121	Two	M20, M22	M20x20x200	20	M20x109	21-105	30	60	30	60	22x160	2930
10400.W0122	Two	M20, M22	M20x22x160	22	M20x69	16-65	30	60	30	60	22x160	2770
10400.W0123	Two	M20, M22	M20x22x200	22	M20x109	19-105	30	60	30	60	22x160	2980
10400.W0124	Two	M24	M24x28x200	28	M24x87	20-80	35	105	35	70	26x250	5486
10400.W0125	Two	M24	M24x28x250	28	M24x137	30-130	35	105	35	70	26x250	5716
10400.W0126	Two	M30	M30x36x315	36	M30x180	24-150	50	130	45	80	33x315	11995
10400.W0127	Two	M36, M42	M36x42x400	42	M30x180	24-150	80	170	80	100	43x100	25683
10400.W0113	Two	M12, M14	M12x12x160	12	M12x49	24-92	20	40	21	40	14x100	830





Support Screw for adjustable clamps

Standard Manual Clam-



10410

STANDARD MANUAL CLAMPING

Material

Steel, hardened, strength class 8.8.

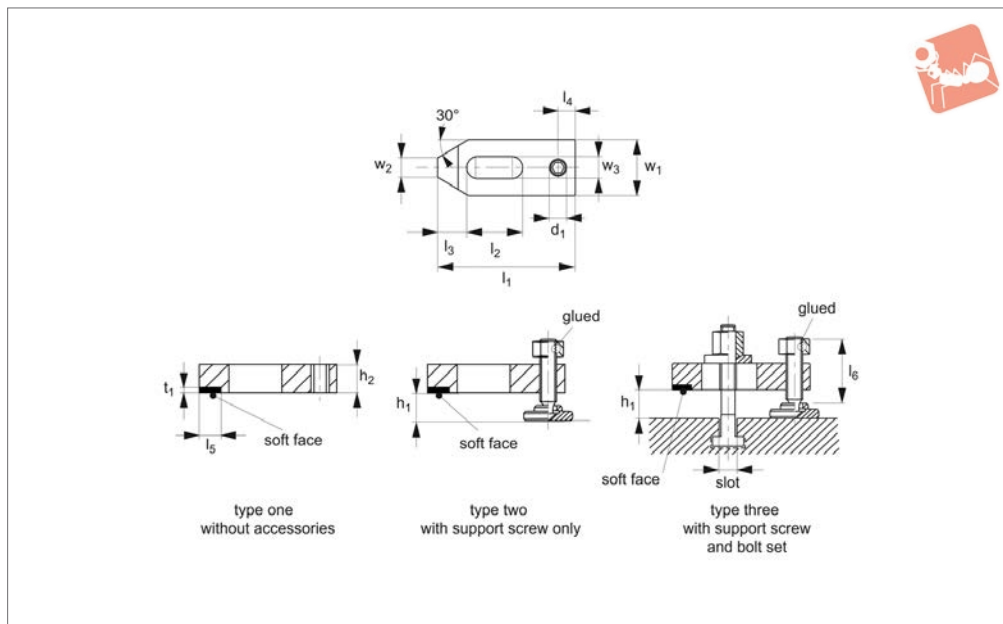
Technical Notes

Suitable for all lockable clamps.

Order No.	$d_1 \times l_1$	d_2	h_1	Weight g
10410.W0010	M10x39	30	8	52
10410.W0012	M12x49	36	10	96
10410.W0013	M12x94	36	10	145
10410.W0016	M16x55	42	13	180
10410.W0017	M16x90	42	13	230
10410.W0020	M20x69	50	16	320
10410.W0021	M20x109	50	16	400
10410.W0024	M24x87	60	20	590
10410.W0025	M24x137	60	20	820
10410.W0030	M30x180	80	24	1704



10420



Material

Clamps: steel, heat-treated, blackened.
Protective face: brass, brazed.

Technical Notes

Type one: clamp only.

Type two: clamp and support screw only.

Type three: clamp, support screw and T-bolt set.

h_1 - dependent on depth of slot and position of fixture nut.

The protective brass plate, brazed on to the clamp, acts to protect the workpiece from damage under clamping.

Tips

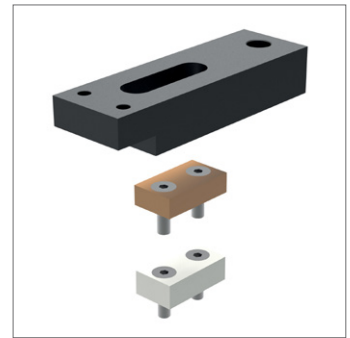
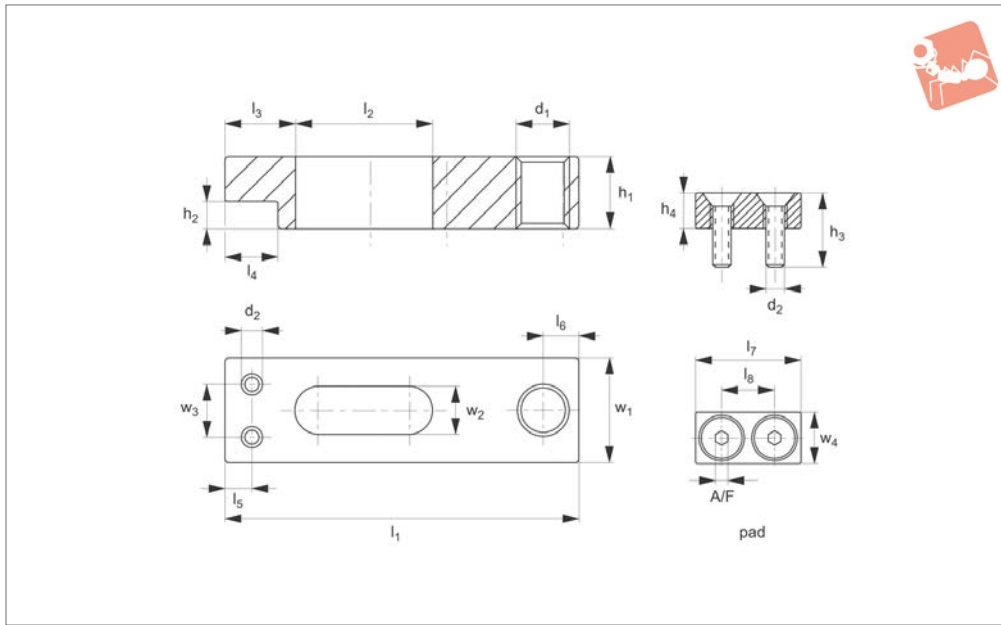
Often used for clamping press tools.

Used with:

10680 ratchet clamp level, 21000 T-slot bolt, 24400 collar nut, 25000 plain washer.

Replacement support screw see part nos. 34500 and 34520.

Order No.	Type	For bolt	Supplied T-bolt	T-slot size	$d_1 \times l_6$	h_1	h_2	l_2	l_3	l_4	l_5	t_1	w_1	$w_2 \times l_1$	w_3	Weight g
10420.W0010	One	M 8					12	22	13	8	10	2	25	9x60	10	104
10420.W0020	One	M10					15	30	15	10	12	2	30	11x80	12	211
10420.W0030	One	M12, M14					20	40	21	12	15	3	40	14x100	14	461
10420.W0040	One	M16, M18					25	45	26	16	20	3	50	18x125	18	917
10420.W0011	Two	M 8			M 8x40	8-23	12	22	13	8	10	2	25	9x60	10	150
10420.W0012	Two	M 8			M 8x60	8-43	12	22	13	8	10	2	25	9x60	10	160
10420.W0021	Two	M10			M10x60	10-38	15	30	15	10	12	2	30	11x80	12	295
10420.W0022	Two	M10			M10x80	10-58	15	30	15	10	12	2	30	11x80	12	310
10420.W0031	Two	M12, M14			M12x60	10-31	20	40	21	12	15	2	40	14x100	14	590
10420.W0032	Two	M12, M14			M12x100	10-71	20	40	21	12	15	3	40	14x100	14	620
10420.W0041	Two	M16, M18			M16x80	12-42	25	45	26	16	20	3	50	18x125	18	1150
10420.W0042	Two	M16, M18			M16x125	12-87	25	45	26	16	20	3	50	18x125	18	1220
10420.W0015	Three	M 8	M 8x8x50	7,6	M 8x40	8-16	12	22	13	8	10	3	25	9x60	10	200
10420.W0016	Three	M 8	M 8x8x80	7,6	M 8x60	8-43	12	22	13	8	10	2	25	9x60	10	220
10420.W0025	Three	M10	M10x10x65	9,6	M10x60	10-22	15	30	15	10	12	2	30	11x80	12	385
10420.W0026	Three	M10	M10x10x100	9,6	M10x80	10-58	15	30	15	10	12	2	30	11x80	12	420
10420.W0035	Three	M12, M14	M12x12x80	11,6	M12x60	10-28	20	40	21	12	15	2	40	14x100	14	740
10420.W0036	Three	M12, M14	M12x12x125	11,6	M12x100	10-71	20	40	21	12	15	3	40	14x100	14	805
10420.W0037	Three	M12, M14	M12x14x80	13,6	M12x60	10-26	20	40	21	12	15	3	40	14x100	14	755
10420.W0038	Three	M12, M14	M12x14x125	13,6	M12x100	10-71	20	40	21	12	15	3	40	14x100	14	820
10420.W0045	Three	M16, M18	M16x16x100	15,6	M16x80	12-31	25	45	26	16	20	3	50	18x125	18	1470
10420.W0046	Three	M16, M18	M16x16x160	15,6	M16x125	12-87	25	45	26	16	20	3	50	18x125	18	1630
10420.W0047	Three	M16, M18	M16x18x100	17,6	M16x80	12-32	25	45	26	16	20	3	50	18x125	18	1490
10420.W0048	Three	M16, M18	M16x18x160	17,6	M16x125	12-87	25	45	26	16	20	3	50	18x125	18	1650



10425

STANDARD MANUAL CLAMPING

Material

Clamp: steel, heat-treated and blackened.
Pads: brass or plastic.

Technical Notes

Clamp provided without clamping pads.

Mounting screws included with clamping pads.

Temperature should not exceed 250°C when using brass pad, or 0-50°C when using plastic pad.

Tips

Particularly suitable for clamping sensitive components; soft pads protect the work-piece.

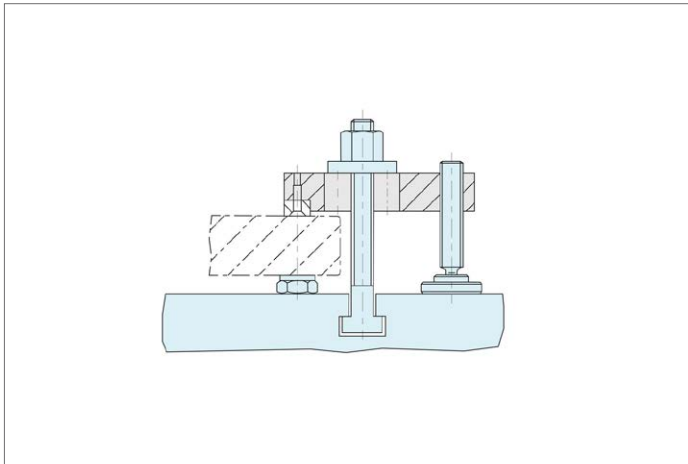
Order No.	Type	d ₁	d ₂	h ₁	h ₂	h ₃	h ₄	Weight g
10425.W0050	Clamp only	M 6	M 2	8	3	-	-	25
10425.W0051	Clamp only	M 6	M 2,5	10	4	-	-	45
10425.W0052	Clamp only	M 8	M 3	12	4	-	-	85
10425.W0053	Clamp only	M10	M 4	16	6	-	-	180
10425.W0054	Clamp only	M12	M 5	20	8	-	-	363
10425.W0055	Clamp only	M16	M 8	30	12	-	-	1445
10425.W0060	Brass pad	-	M 2	-	-	8	4	2.5
10425.W0061	Brass pad	-	M 2,5	-	-	10	6	7
10425.W0062	Brass pad	-	M 3	-	-	12	6	11
10425.W0063	Brass pad	-	M 4	-	-	16	9	25
10425.W0064	Brass pad	-	M 5	-	-	20	12	53
10425.W0065	Brass pad	-	M 8	-	-	30	16	193
10425.W0070	Plastic pad	-	M 2	-	-	8	4	0.7
10425.W0071	Plastic pad	-	M 2,5	-	-	10	6	1.6
10425.W0072	Plastic pad	-	M 3	-	-	12	6	2.7
10425.W0073	Plastic pad	-	M 4	-	-	16	9	6
10425.W0074	Plastic pad	-	M 5	-	-	20	12	13
10425.W0075	Plastic pad	-	M 8	-	-	30	16	48

Order No.	l ₁	l ₂	l ₃	l ₄	l ₅	l ₆	l ₇	l ₈	w ₁	w ₂	w ₃ +0.5	w ₄	A/F
10425.W0050	40	15.5	8	6	4	3.0	-	-	12	6	5.5	-	-
10425.W0051	50	22.0	10	8	5	4.0	-	-	16	9	7.0	-	-
10425.W0052	63	29.0	12	10	6	5.0	-	-	20	11	9.0	-	-
10425.W0053	80	36.0	15	13	8	6.5	-	-	25	14	11.0	-	-
10425.W0054	100	44.0	18	16	10	8.0	-	-	32	16	14.0	-	-
10425.W0055	160	63.0	30	28	16	14.0	-	-	50	30	18.0	-	-
10425.W0060	-	-	-	-	-	-	12	6	-	-	5.5	6	1.3
10425.W0061	-	-	-	-	-	-	16	9	-	-	7.0	8	1.5
10425.W0062	-	-	-	-	-	-	20	11	-	-	9.0	10	2.0
10425.W0063	-	-	-	-	-	-	25	14	-	-	11.0	13	2.5
10425.W0064	-	-	-	-	-	-	32	16	-	-	14.0	16	3.0



STANDARD MANUAL CLAMPING

Order No.	l_1	l_2	l_3	l_4	l_5	l_6	l_7	l_8	w_1	w_2	w_3 $+0.5$	w_4	A/F
10425.W0065	-	-	-	-	-	-	50	30	-	-	18.0	28	5.0
10425.W0070	-	-	-	-	-	-	12	6	-	-	5.5	6	1.3
10425.W0071	-	-	-	-	-	-	16	9	-	-	7.0	8	1.5
10425.W0072	-	-	-	-	-	-	20	11	-	-	9.0	10	2.0
10425.W0073	-	-	-	-	-	-	25	14	-	-	11.0	13	2.5
10425.W0074	-	-	-	-	-	-	32	16	-	-	14.0	16	3.0
10425.W0075	-	-	-	-	-	-	50	30	-	-	18.0	28	5.0



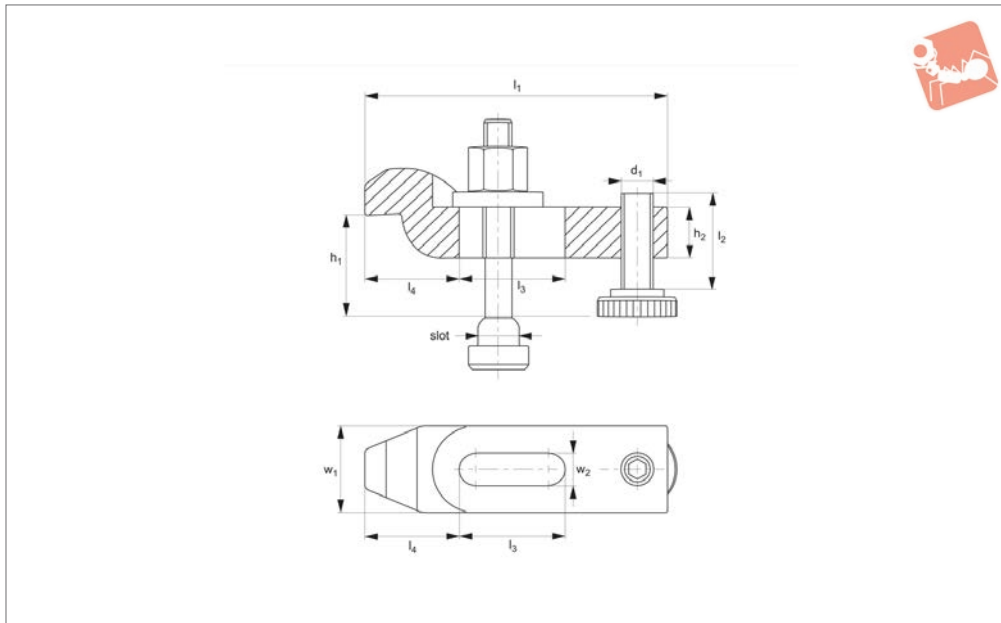


Adjustable Goose Neck Clamps

with height adjusting screw



Standard Manual Clam-



10500

STANDARD MANUAL CLAMPING

Material

Steel, heat-treated and enamelled.

Technical Notes

Type one: clamp, support screw and T-bolt set.

Type two: clamp and support screw only.

Dimension h_1 is dependent on depth of slot and position of fixture nut.

Tips

Often used for clamping press tools.

Used with:

10680 ratchet clamp lever, 21000 T-slot bolt, 24400 collar nut, 25000 plain washer.

Replacement parts:

Replacement support screw see part no. 10410.

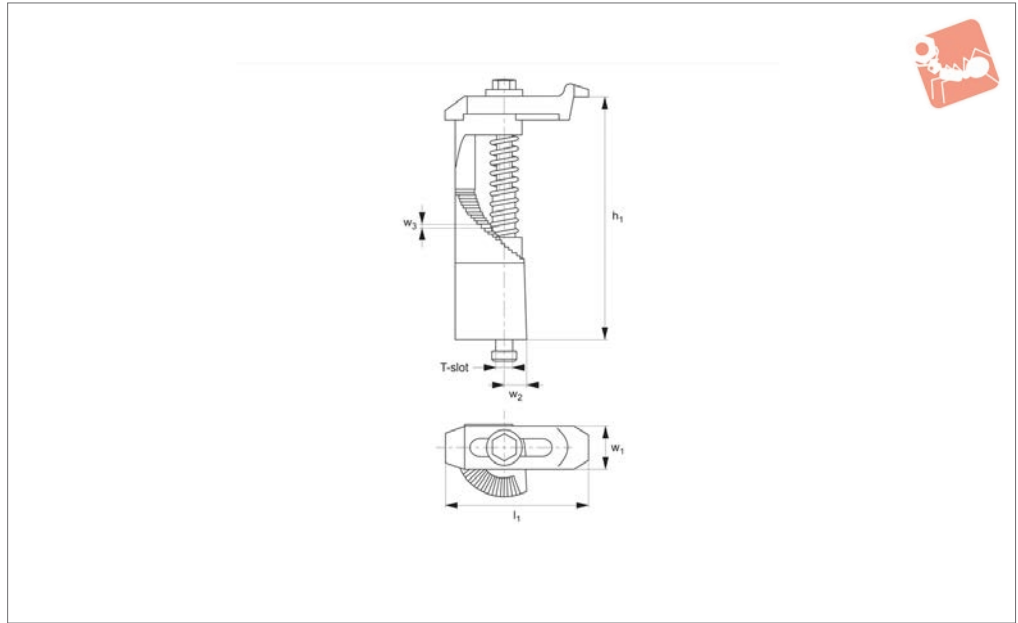
Important Notes

Particularly suited to clamping low work-pieces. The clamping height can be adjusted by means of the support screw.

Order No.	Type	For bolt	For T-slot	T-bolt	$d_1 \times l_2$	h_1	h_2	l_3	l_4	w_1	$w_2 \times l_1$	Weight g
10500.W0010	With bolt	M10	10	M10x10x80	M10x39	22-46	15	32	36.0	30	11x100	440
10500.W0012	With bolt	M12	12	M12x12x100	M12x49	28-58	20	40	44.0	40	14x125	906
10500.W0014	With bolt	M12	14	M12x14x100	M12x49	28-56	20	40	44.0	40	14x125	926
10500.W0016	With bolt	M16	16	M16x16x125	M16x55	36-71	25	50	51.5	50	18x160	1859
10500.W0018	With bolt	M16	18	M16x18x125	M16x55	36-69	25	50	51.5	50	18x160	1875
10500.W0020	With bolt	M20	20	M20x20x160	M20x69	43-92	30	70	59.0	60	22x200	3322
10500.W0022	With bolt	M22	22	M20x22x160	M20x69	43-92	30	70	59.0	60	22x200	3352
10500.W0110	W/o bolt	M10	-	-	M10x39	22-51	15	32	36.0	30	11x100	344
10500.W0112	W/o bolt	M12	-	-	M12x49	28-65	20	40	44.0	40	14x125	761
10500.W0116	W/o bolt	M16	-	-	M16x55	36-75	25	50	51.5	50	18x160	1516
10500.W0120	W/o bolt	M20	-	-	M20x69	43-92	30	70	59.0	60	22x200	2669
10500.W0124	W/o bolt	M24	-	-	M24x87	52-115	35	60	76.5	70	26x200	3810



10550



Material

Steel forged, thread quality 8.8.

Technical Notes

Clamping unit for quick action. The compact construction ensures a small foot-

print on the machine table. Allows clamping over a wide height range with minimum fuss.

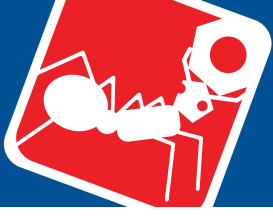
* Clamping forces stated for minimum h_1

dimension.

Tips

Used with:
24000 T-nuts.

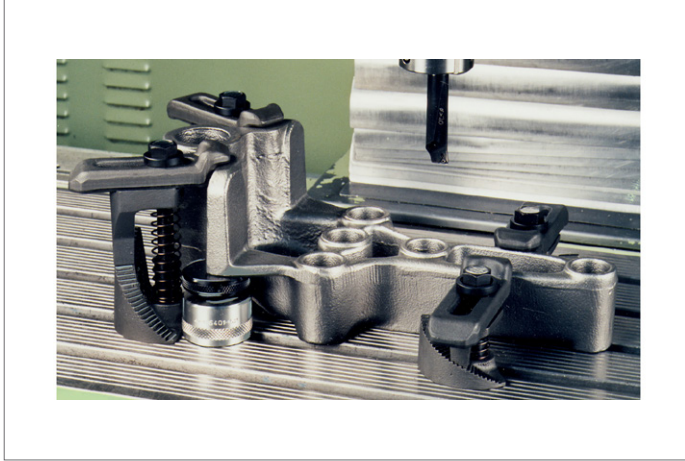
Order No.	Size	T-slot size	h_1	l_1	Tightening torque Nm	w_1	w_2	w_3	Clamping force kN max.	Weight g
10550.W0120	12-0	12	0-45	140	50	34	14	0.8	11.5	700
10550.W0121	12-1	12	15-45	112	50	34	14	0.8	11.4	600
10550.W0122	12-2	12	30-75	112	50	34	15	1.3	11.4	800
10550.W0123	12-3	12	60-135	112	50	34	16	2.5	11.4	1200
10550.W0124	12-4	12	120-195	112	50	34	18	2.5	11.4	1700
10550.W0125	12-5	12	180-255	112	50	34	19	2.5	11.4	2200
10550.W0126	14-0	14	0-45	140	80	34	14	0.8	15.5	700
10550.W0127	14-1	14	15-45	112	80	34	14	0.8	15.3	600
10550.W0128	14-2	14	30-75	112	80	34	15	1.3	15.3	800
10550.W0129	14-3	14	60-135	112	80	34	16	2.5	15.3	1200
10550.W0130	14-4	14	120-195	112	80	34	18	2.5	15.3	1700
10550.W0131	14-5	14	180-255	112	100	34	19	2.5	15.3	2200
10550.W0132	16-0	16	0-70	160	100	50	20	1.3	15.3	1900
10550.W0133	16-1	16	25-70	125	100	50	20	1.3	16.3	1700
10550.W0134	16-2	16	50-120	125	100	50	21	2.5	16.3	2500
10550.W0135	16-3	16	100-220	125	100	50	21	3.8	16.3	3540
10550.W0136	16-4	16	200-320	125	100	50	24	3.8	16.3	4900
10550.W0137	18-0	18	0-70	160	130	50	20	1.3	17.8	1870
10550.W0138	18-1	18	25-70	125	130	50	20	1.3	19.0	1670
10550.W0139	18-2	18	50-120	125	130	50	21	2.5	19.0	2500
10550.W0140	18-3	18	100-220	125	130	50	21	3.8	19.0	3580
10550.W0141	18-4	18	200-320	125	130	50	24	3.8	19.0	4720



Adjustable Step Pillar Clamps with goose neck



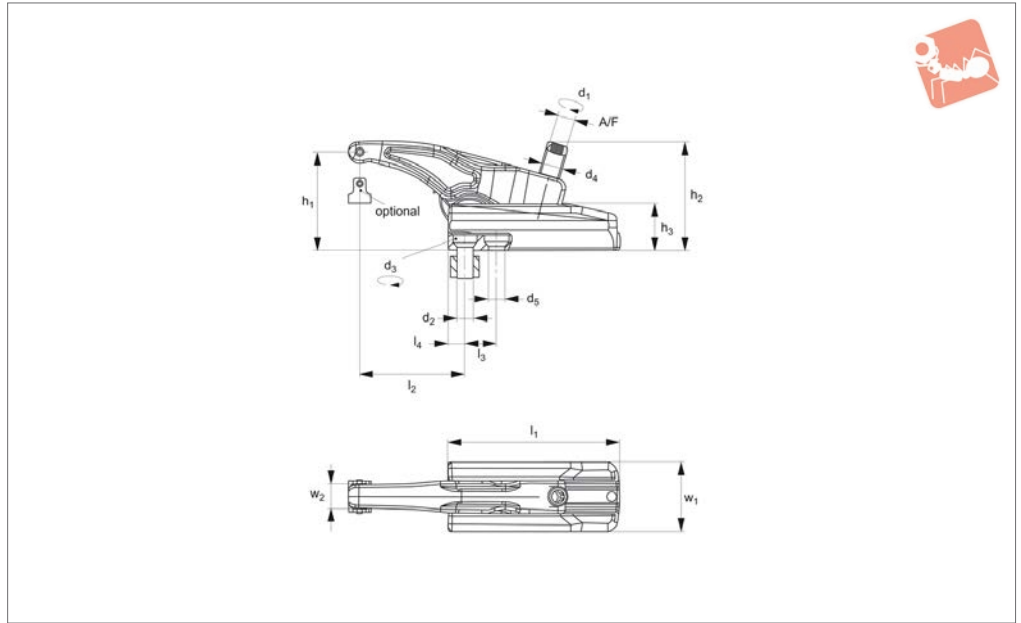
Standard
Manual Clam-



STANDARD MANUAL CLAMPING



10588.1



STANDARD MANUAL CLAMPING

Material

Steel, tempered, alloyed and galvanised (black).

Technical Notes

Complete with mounting kit.
Powerful, adjustable height clamp for

milling, press tools and injection mould applications. Clamping force 22 kN to 49 kN depending on size. Low height readily adjustable. Smooth or ribbed clamping pad available. For use in threaded holes (M10, M12, M16, M20) and 12-28mm T-slot

bases.

Tips

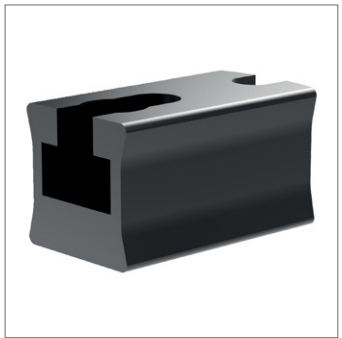
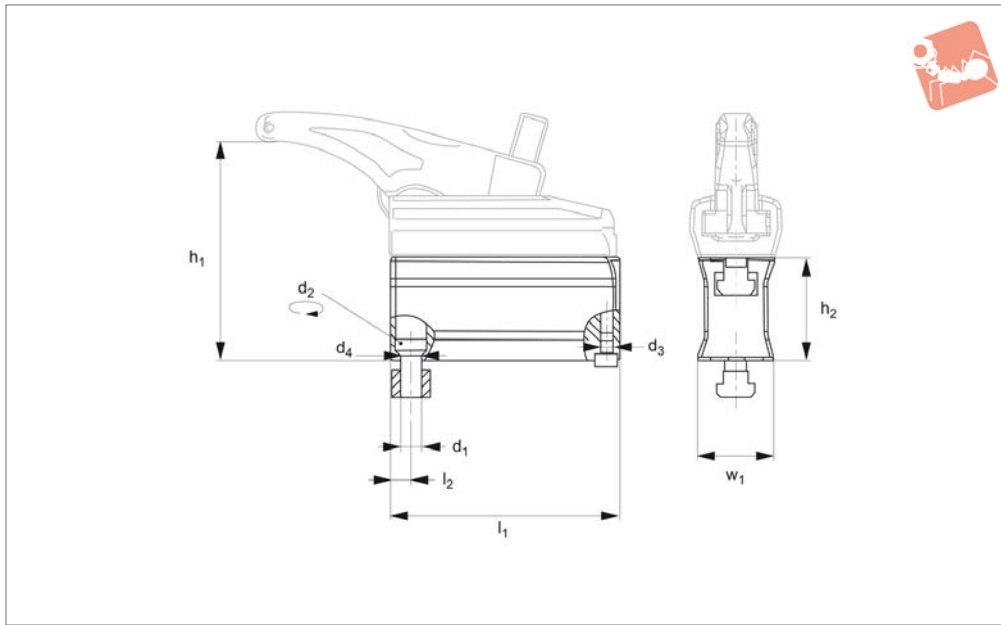
Torque the screws to the correct specified torque. Clamping force depends on thread lubrication and thread condition.

Order No.	Size	For slot	d ₂	d ₄	d ₅	h ₁ min. max.	h ₂	h ₃	l ₁	l ₂	l ₃	l ₄	Torque to d ₁ Nm max.	Torque to d ₃ Nm max.	w ₁	w ₂	A/F	Load capacity for static load kN max.	Weight g
10588.W0022	22	12	M10	M12	13	5-38	58	30	65	15-50		11	50	35	45	13	6	22	700
10588.W0023	22	14	M12	M12	13	5-38	58	30	65	15-50		11	50	40	45	13	6	22	700
10588.W0030	30	14	M12	M16	13	6-68	85	36	135	13-110	25	13	100	70	54	18	8	30	2013
10588.W0031	30	18	M16	M16	17	6-68	85	36	135	16-114	28	16	100	150	54	18	8	30	2045
10588.W0032	32	14	M12	M16	13	6-50	78	36	95	12-82	20	12	120	70	54	18	8	32	1462
10558.W0040	40	18	M16	M20	17	6-50	92	42	110	15-95	26	15	150	150	60	20	10	40	2262
10558.W0043	43	18	M16	M20	17	5-80	105	42	155	16-134	32	16	220	150	60	20	10	43	3158
10558.W0049	49	22	M20	M24	21	7-88	125	52	175	19-165	36	19	220	200	75	25	12	49	5928



Spacer Element

for power clamp 10588.W0022 - W0049



10588.2

STANDARD MANUAL CLAMPING

Material

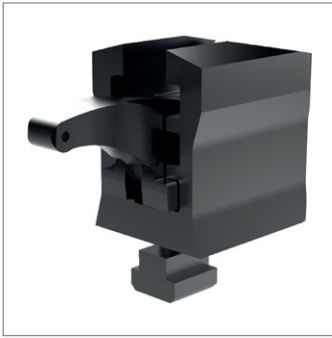
Steel, tempered and galvanised (black).

Further space elements could be added to achieve required clamping height.

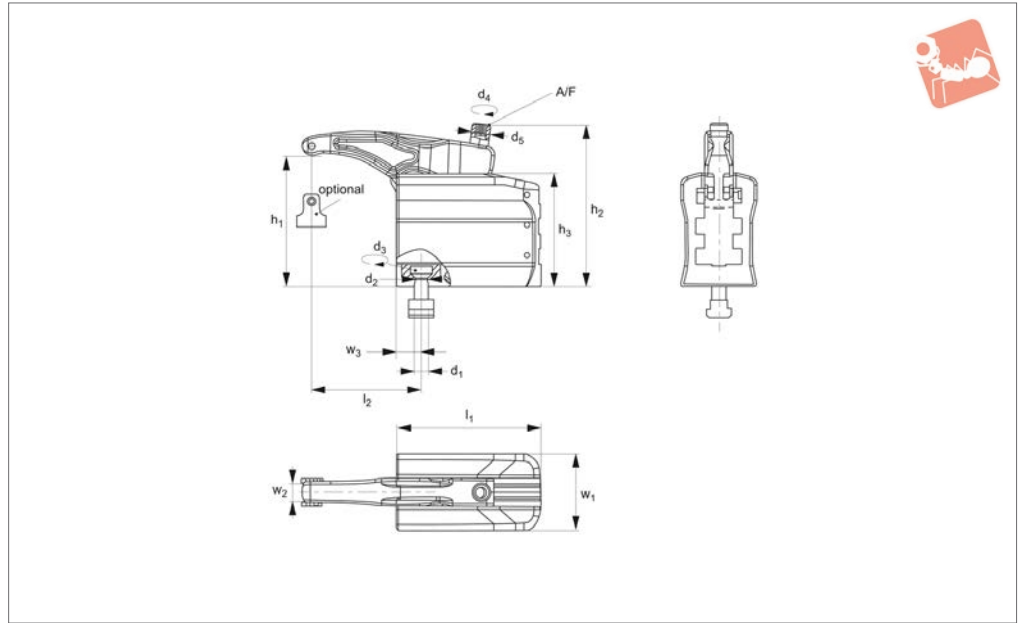
Technical Notes

Spacer element only and bolts.

Order No.	Size	For T-slot	d ₁	d ₂	d ₃	d ₄	h ₁ min. max.	h ₂	l ₁	l ₂	w ₁	Weight g
10588.W0122	22	12	M10	35	M 6	14	40-73	35	65	12	36.0	480
10588.W0123	22	14	M12	40	M 6	13	40-73	35	65	12	36.0	480
10588.W0130	30	14	M12	70	M 8	13	66-128	60	135	12	44.5	2300
10588.W0132	32	14	M12	70	M 8	13	66-110	60	95	12	44.5	1570
10588.W0140	40	18	M16	150	M 8	17	76-120	70	110	16	47.5	2290
10558.W0143	43	18	M16	150	M 8	17	75-150	70	155	16	47.5	3344
10558.W0149	49	22	M20	200	M10	21	87-168	80	175	19	58.0	5286



10588.3



Material

Steel, tempered, alloyed and galvanised (black).

Technical Notes

Complete with three-step support element, clamping unit and mounting kit.

Tips

Three step clamping:

1. Position clamp on table and tighten to correct torque.
2. Adjust the clamping arm.
3. Tighten the clamping screw to clamp

part (tighten to correct torque).

Important Notes

Not suitable for use on injection moulding, die casting machines or presses.

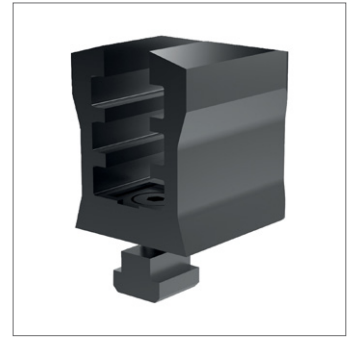
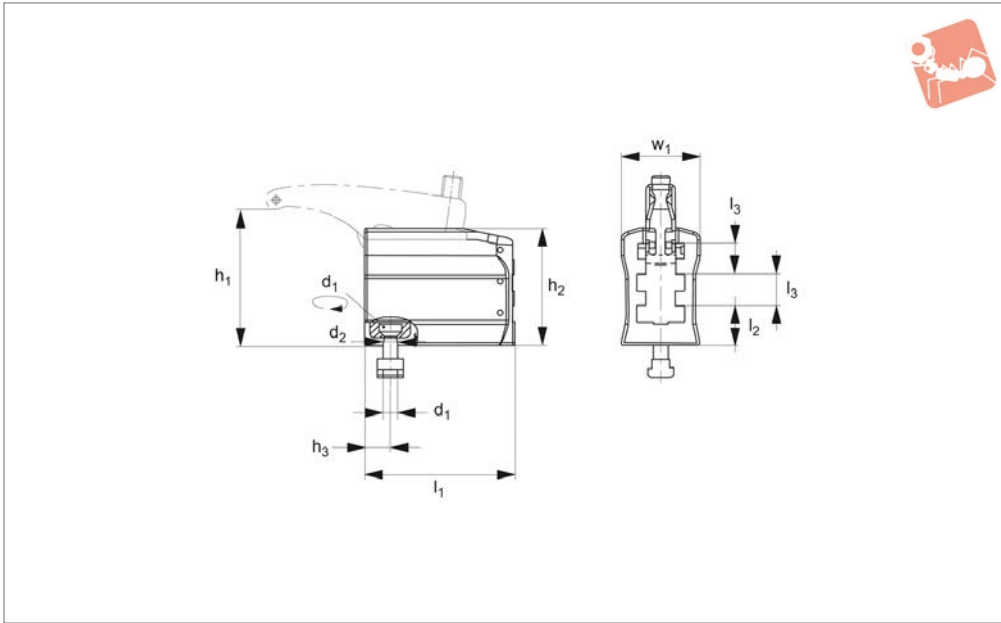
Order No.	Size	For T-slot	d ₁	d ₃	d ₅	h ₁ min. max.	h ₂	h ₃	l ₁	l ₂	Torque to d ₂ Nm max.	Torque to d ₄ Nm max.	w ₁	w ₂	w ₃	A/F	Load capacity for static load kN max.	Weight g
10588.W0222	22	14	M12	40	M12	9-74	98	67	65	30-58	13,5	55	52	13	14,5	6	22	1120
10588.W0230	30	14	M12	70	M16	13-129	146	101	130	37-106	13,5	100	68	18	22,5	8	30	4600
10588.W0243	43	18	M16	150	M20	16-147	175	116	150	48-114	17,5	200	75	20	25,0	10	43	6844
10558.W0249	49	22	M20	200	M24	16-169	207	140	170	68-172	22,0	220	85	25	29,0	12	49	10870



Spacer Element

for power clamp 10588.W0222 - W0249

Standard Manual Clam-



10588.4

STANDARD MANUAL CLAMPING

Material

Steel, tempered and galvanised (black).

ting kit. Unsuitable for injection moulding, die casting machines and presses.

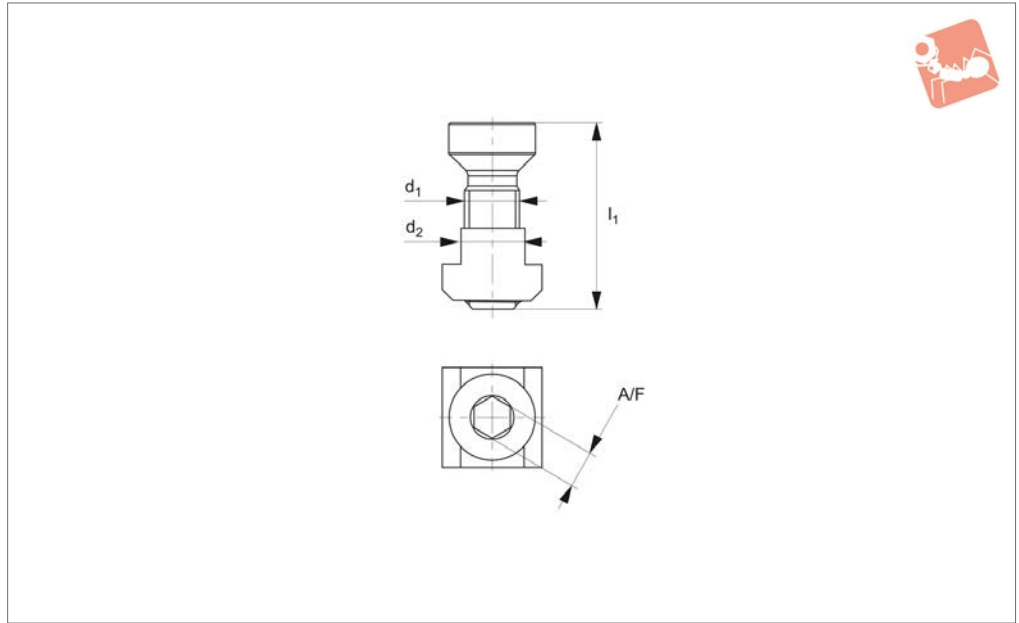
Technical Notes

Complete with pressure plate and moun-

Order No.	Size	For T-slot	d ₁	d ₂	h ₁	h ₂	h ₃	l ₁	l ₂	l ₃	Torque to Nm max.	w ₁	Weight g
10588.W0322	22	14	M12	13.5	9-74	65	14.5	65	25	16	40	52	795
10588.W0330	30	14	M12	13.5	13-129	101	22.5	130	34	27	70	68	3440
10588.W0343	43	18	M16	17.5	16-147	116	25.0	150	43	29	150	75	5010
10558.W0349	49	22	M20	22.0	16-169	138	29.0	170	52	34	200	85	7710



10588.5



Material

Steel, heat-treated.

Technical Notes

Fastening screw strength class 12.9 and T-slot nut DIN 508.

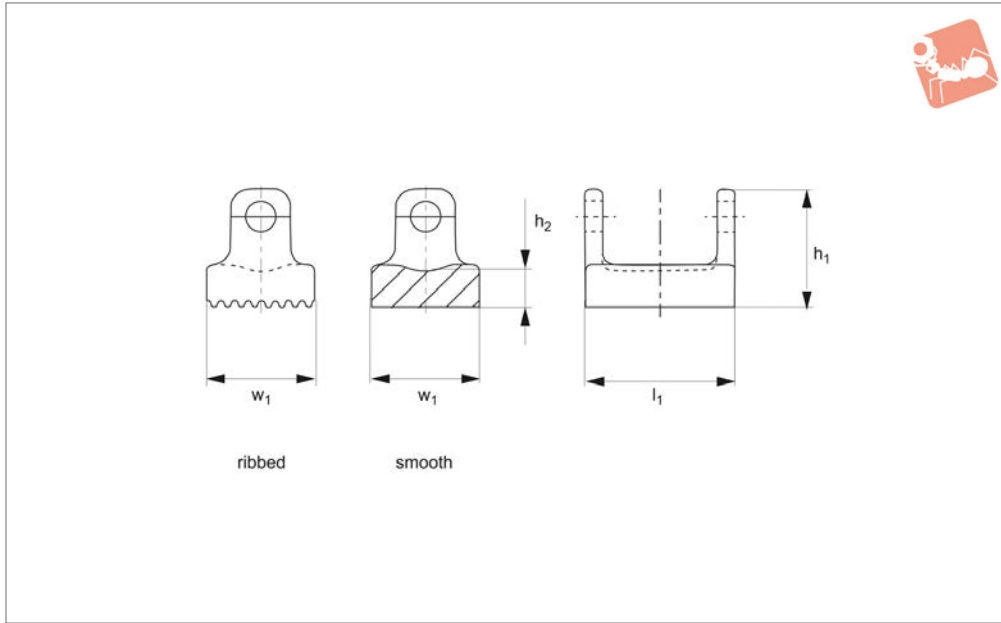
Order No.	Size	d ₁	d ₂	l ₁	A/F	Weight g
10588.W2212	22	M10	12	29.0	6	61
10588.W2214	22	M12	14	31.5	6	61
10588.W2215	22	M12	14	35.5	6	40
10588.W3014	30/32	M12	14	34.0	8	70
10588.W3016	30/32	M12	16	38.0	8	98
10588.W3018	30/32	M12	18	38.0	8	125
10588.W3019	30	M12	14	41.0	8	78
10588.W3118	30	M16	18	41.0	8	143
10588.W3120	30	M16	20	45.0	8	208
10588.W3122	30	M16	22	49.0	8	270
10588.W3124	30	M16	24	49.0	8	348
10588.W4018	40/43	M16	18	43.0	10	145
10588.W4020	40/43	M16	20	47.0	10	195
10588.W4022	40/43	M16	22	51.0	10	264
10588.W4024	40/43	M16	24	51.0	10	350
10588.W4319	43	M16	18	52.0	10	160
10558.W4922	49	M20	22	52.0	12	300
10558.W4923	49	M20	22	66.0	12	330
10558.W4924	49	M20	24	55.0	12	390
10558.W4928	49	M20	28	62.0	12	505



Pressure Pad

for power clamp 10588.W0022 - W0049

Standard Manual Clam-



10588.6

STANDARD MANUAL CLAMPING

Material

Stainless steel.

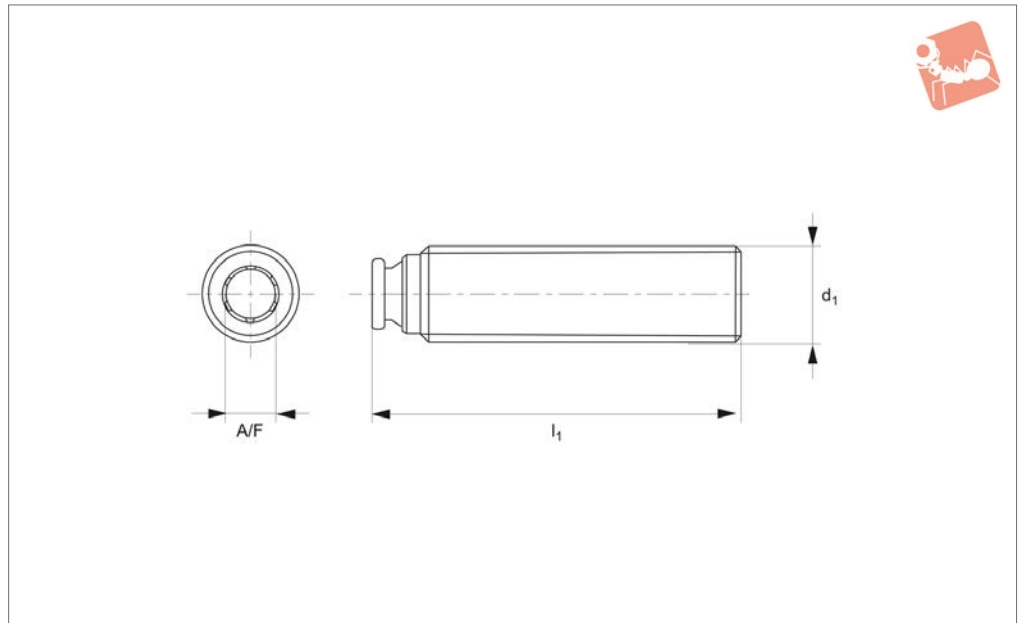
Technical Notes

Complete with pin.

Order No.	Size	Form	h_1	h_2	l_1	w_1	Weight g
10588.W0701	22	Smooth	14.0	4.5	19	12	11
10588.W0702	30/32	Smooth	19.5	6.0	25	18	28
10588.W0703	40/43	Smooth	24.0	6.5	30	20	47
10588.W0704	49	Smooth	28.0	7.0	36	25	75
10588.W0711	22	Ribbed	14.0	4.5	19	12	10
10558.W0712	30/32	Ribbed	19.5	6.0	25	18	27
10588.W0713	40/43	Ribbed	24.0	6.5	30	20	48
10558.W0714	49	Ribbed	28.0	7.0	36	25	78



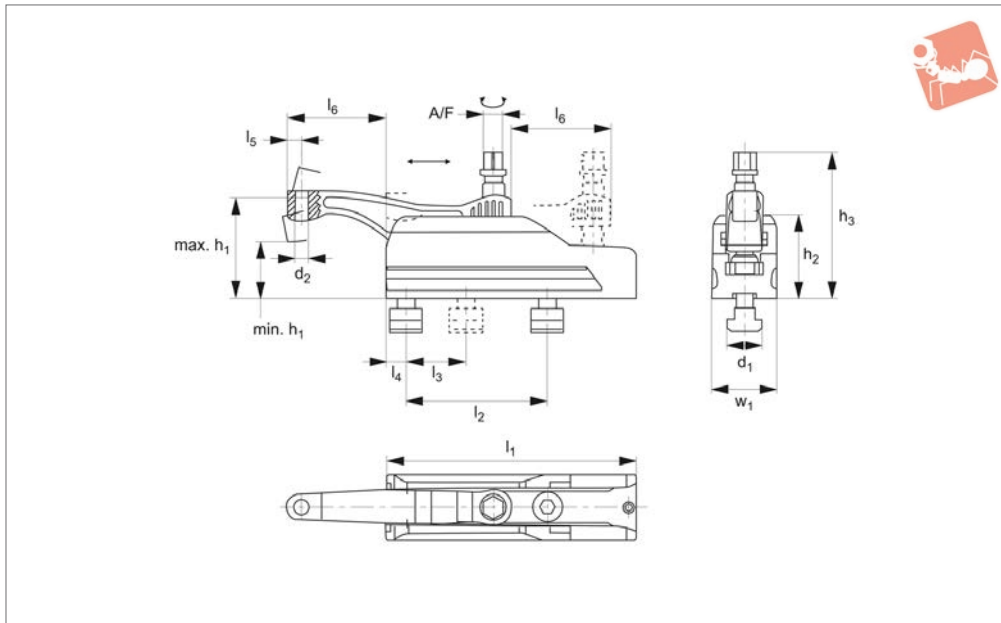
10588.7



Material

Steel, tempered and burnished.

Order No.	Size	d ₁	l ₁	A/F	Weight g
10588.W0823	22	M12	43	6	30
10588.W0830	30	M16	62	8	80
10588.W0832	32	M16	55	8	70
10588.W0840	40	M20	65	10	128
10588.W0843	43	M20	78	10	165
10558.W0849	49	M24	93	12	275



10592.1

STANDARD MANUAL CLAMPING

Material

Body: steel, heat-treated and black coated.
Lever: steel, heat-treated and silver coated.

Technical Notes

Assembly and set-up:

1. Take out stop pin ISO 4762-M 6 x 10.
2. Move back and take out clamping lever.

3. Tightening by two screws with internal hexagon (included).

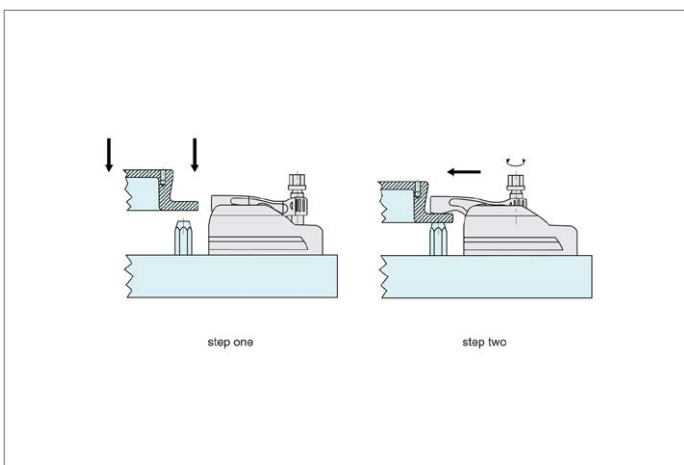
4. Place clamping lever in sliding rail.
5. Tighten clamping screw to torque required.

Tips

The clamps are corrosion resistant, provide easy clamping of varied heights with

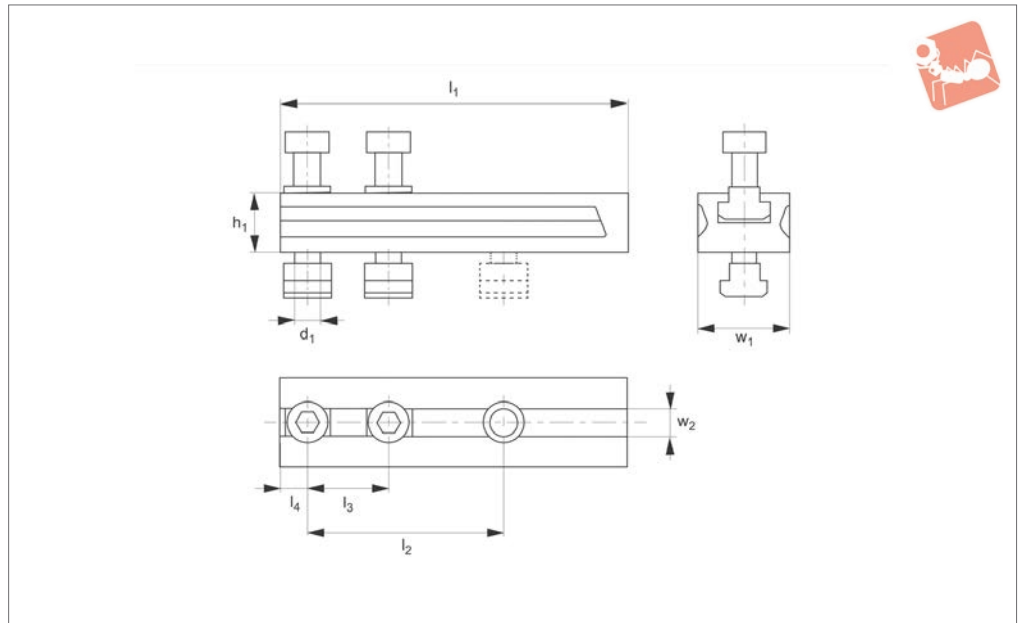
strong clamping forces. The self-locking clamping lever allows the clamp to be used in horizontal or vertical orientations. Slide back the clamping lever to allow access to parts. Corrosion resistant coating is applied to the spacer elements (see order no's 10592.W0112 and 10592.W0116).

Order No.	d ₁	d ₂	h ₁ min.	h ₁ max.	h ₂	h ₃	l ₁	l ₂ +1	l ₃	l ₄	l ₅	l ₆ max.	Tightening torque Nm max.	w ₁	A/F	Clamping force kN max.	Weight g
10592.W0012	M12	M 8	40	60	59	95	134	70	50	13	10,0	43	45	45	16	15	1813
10592.W0016	M16	M12	47	85	70	126	213	120	50	17	12,5	85	75	55	18	25	4274





10592.2



Material

Steel, heat-treated, black coated.

Technical Notes

The height adapter for compact clamps

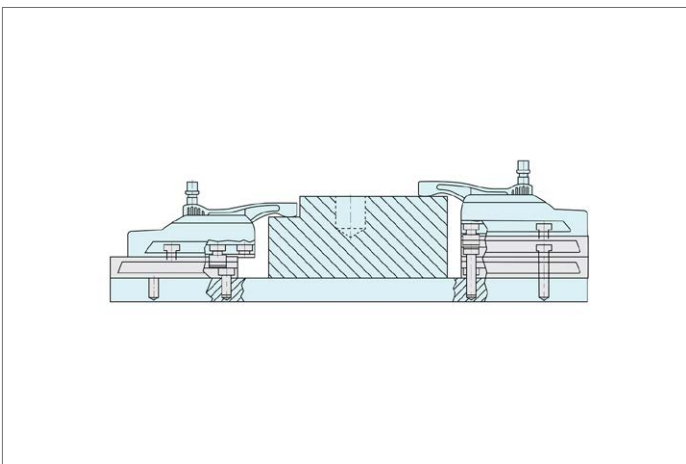
allows a clamping height increase.

Tips

When using multiple height adapters, the screws ISO 10642 or DIN 7984 have to be

replaced by screws extended by the dimension h_1 .

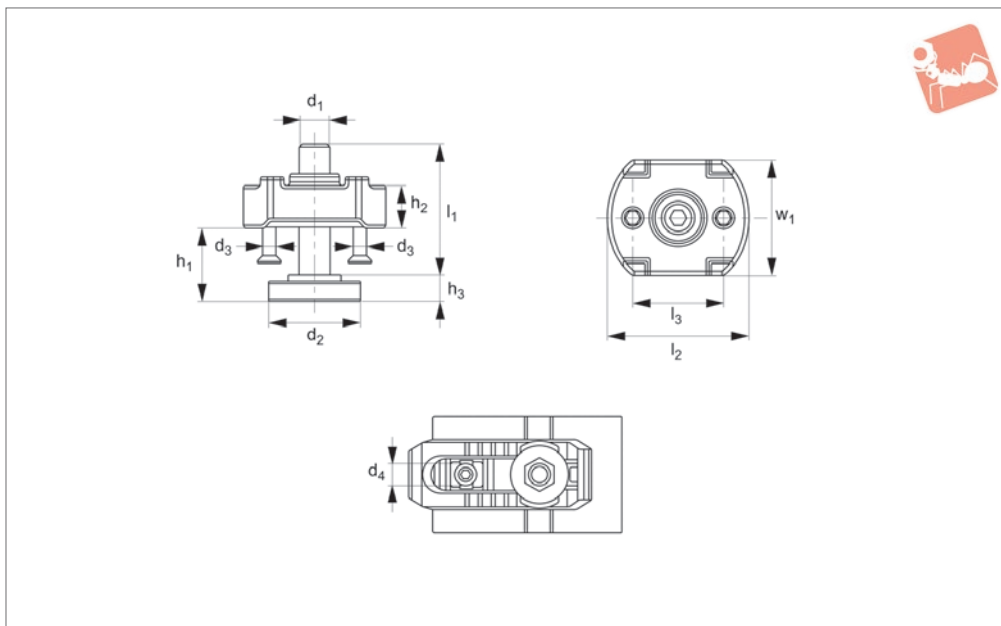
Order No.	d_1	h_1	l_1	l_2 +1	l_3	l_4	w_1	w_2 tol. H12	Weight g
10592.W0112	M12	20	134	70	50	13	45	14	874
10592.W0116	M16	35	213	120	50	17	55	18	2534





Support Extension for crocodile clamp 10603

Standard Manual Clam-



10604

STANDARD MANUAL CLAMPING

Material

Body and support screw: steel, zinc plated and hardened. Strength class 8.8.

counterhold of the crocodile clamp to increase the clamping height.

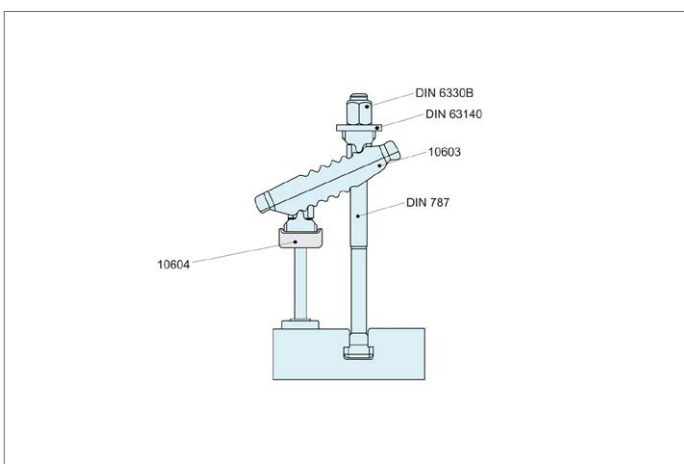
Technical Notes

The support extension is screwed to the

Tips

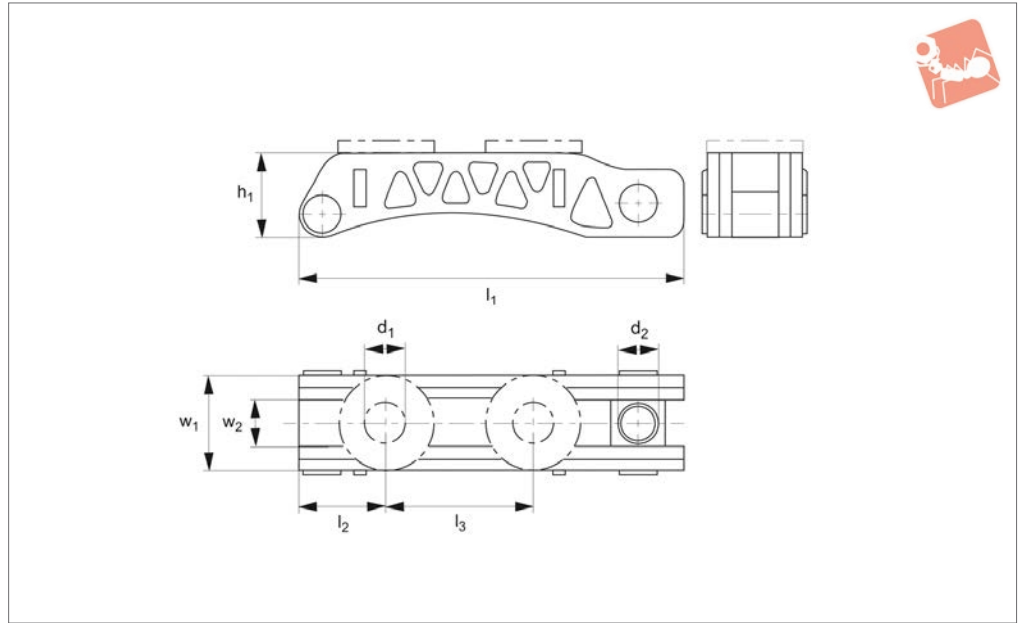
Allows continuous adjustment of clamping heights.

Order No.	$d_1 \times l_1$	d_2	d_3	d_4	h_1 min. max.	h_2	h_3	l_2	l_3	w_1	Weight g
10604.W0010	M10x39	30	M 5	13	8-30	10	8	44	30	30	197
10604.W0016	M12x49	36	M 5	17	10-37	16	10	54	35	42	433
10604.W0018	M12x94	36	M 5	17	10-80	16	10	54	35	42	473
10604.W0020	M16x55	42	M 5	21	13-41	20	13	60	40	50	608
10604.W0022	M16x90	42	M 5	21	13-73	20	13	60	40	50	640
10604.W0025	M20x69	50	M 6	25	16-52	25	16	70	50	50	1136
10604.W0027	M20x109	50	M 6	25	16-91	25	16	70	50	50	1396





10610.1



Material

Steel, tempered and burnished.

Technical Notes

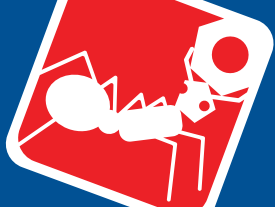
The weight saving device allows a 50%

reduction in weight with no effect on clamping force that can be applied. Useful for rotating applications.

Tips

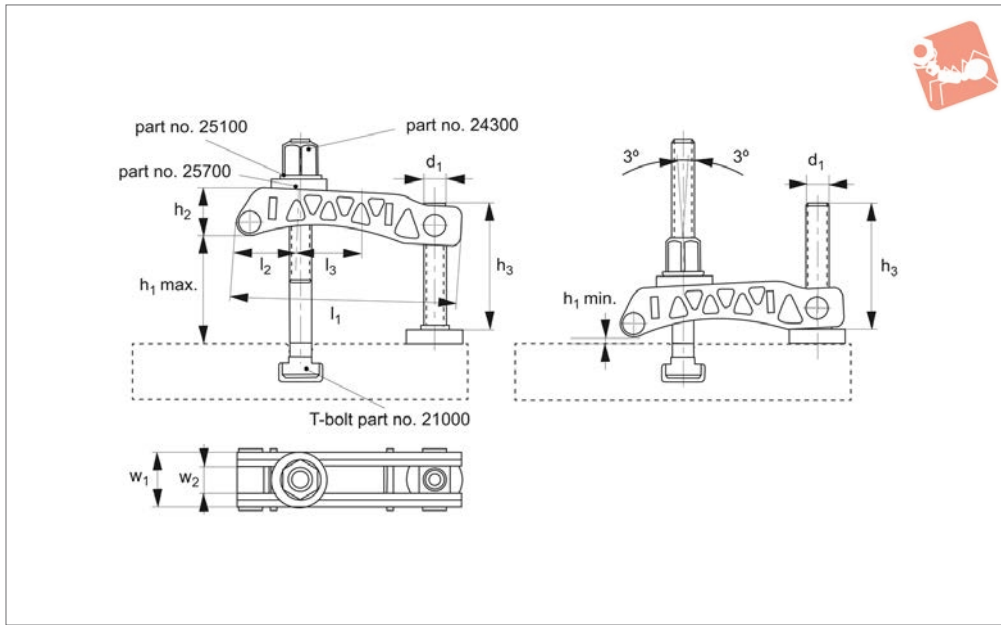
For clamping, T-bolts no. 21000 (DIN 787), studs no. 21100 (DIN 6379) and cheese head screws (ISO 4762) can be used.

Order No.	Size	For clamping screw	d ₁	d ₂	h ₁	l ₁	l ₂	l ₃	w ₁	w ₂	Weight g
10610.W0022	22	M20, M22	22	M20	44	200	45	77	49	25	1289
10610.W0026	26	M24	26	M24	44	250	46	116	54	30	1630
10610.W0033	33	M30	33	M30	71	315	59	152	72	40	4522
10610.W0043	43	M36, M42	43	M30	80	400	74	209	102	54	9709



Scalloped Clamp with adjustable support screw

Standard Manual Clam-



10610.2

STANDARD MANUAL CLAMPING

Material

Steel, tempered and burnished.

Technical Notes

The weight saving device allows a 50% reduction in weight with no effect on clam-

ping force that can be applied. Useful for rotating applications.

Tips

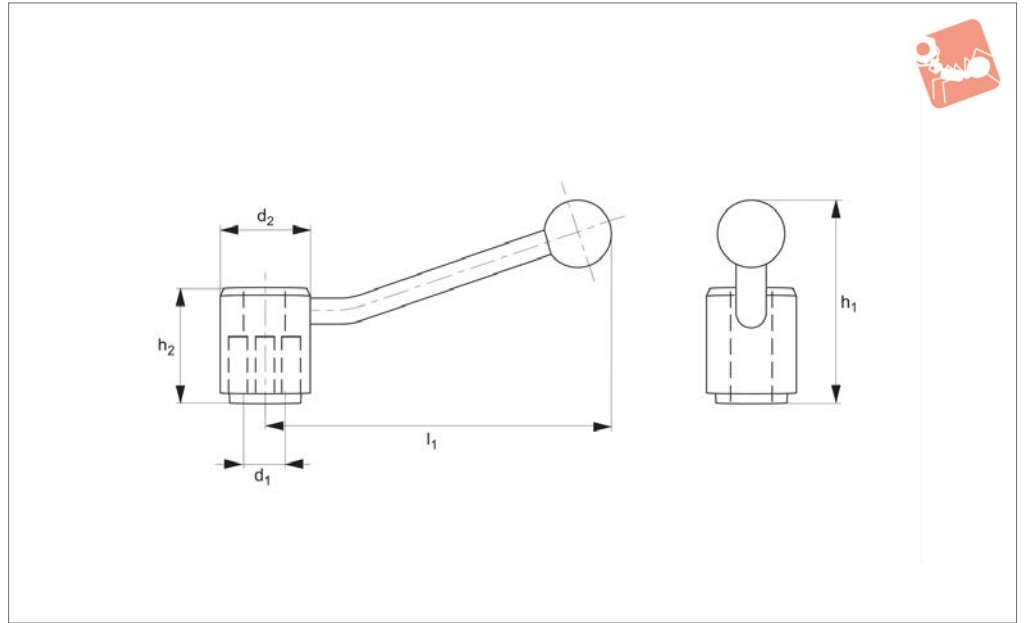
For clamping, clamping screws (DIN 21000), stud bolts (DIN 21100) and cheese

head screws (ISO 4762) can be used. h_1 is dependent on the depth of the slot and position of the fixture nut.

Order No.	Size	For T-slot	With T-bolt	$d_1 \times h_2$	h_1 min. max.	h_3	l_1	l_2	l_3	w_1	w_2	Weight g
10610.W0122	22	20	M20x20x160	M20x69	8-58	44	200	45	77	49	25	2434
10610.W0123	22	20	M20x20x200	M20x109	8-98	44	200	45	77	49	25	2531
10610.W0126	26	24	M24x28x200	M24x87	10-81	44	250	46	116	54	30	3779
10610.W0127	26	24	M24x28x250	M24x137	10-130	44	250	59	116	54	30	3884
10610.W0133	33	36	M30x36x315	M30x180	7-214	71	315	59	152	72	40	9044
10610.W0143	43	48	M36x42x400	M30x180	7-153	80	400	74	209	102	54	17560



10680



Material

Steel, burnished.

clamps, but particularly useful for part nos. 10400, 10500 and 10620.

without the need for spanners.

Technical Notes

For use as quick acting lever for most

Tips

The ratchet action allows quick clamping

Order No.	d ₁	d ₂	h ₁	h ₂	l ₁	Weight g
10680.W0012	M12	33	83	48	135	360
10680.W0016	M16	40	105	64	158	620